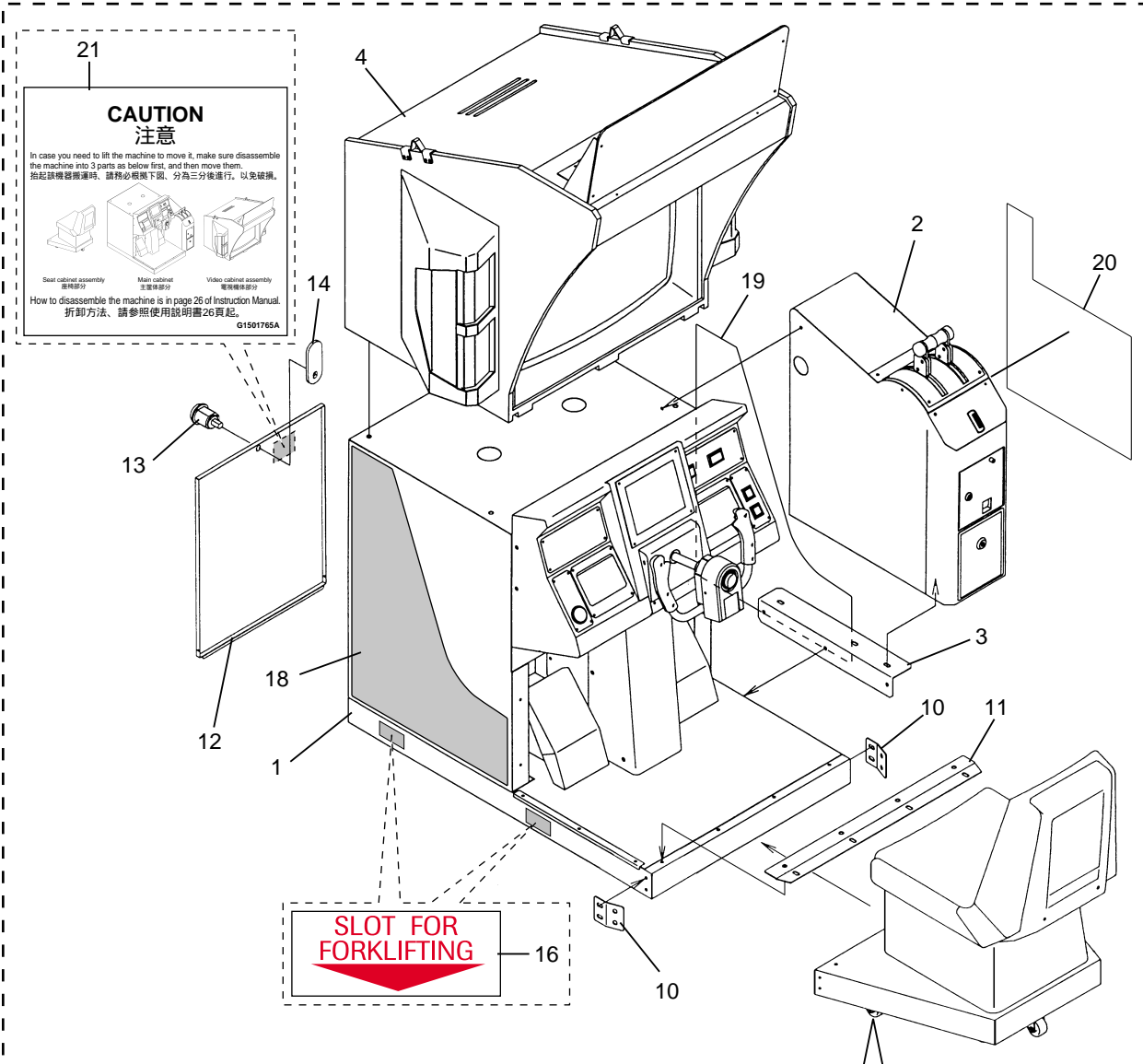


PARTS CATALOG



21

CAUTION
注意

In case you need to lift the machine to move it, make sure disassemble the machine into 3 parts as below first, and then move them.
 抬起該機器搬運時，請務必根據下圖，分為三部分後進行，以免破壞。

Seat cabinet assembly 座椅櫃部分
Main cabinet 主機櫃部分
Video cabinet assembly 電視櫃部分

How to disassemble the machine is in page 26 of Instruction Manual.
 拆卸方法，請參照使用說明書26頁起。

G1501765A

SLOT FOR FORKLIFTING

この装置は、加工場以外で使用されるべき第一種特殊設置です。住宅地域またはその他の限られた地域で使用する場合は、テレビジョン受像機等に相当する電圧を要することになります。

高電圧注意
このセットの内蔵には高電圧がかけられており、専門の技術者以外には修理の部品に触れないで下さい。

HAZARDOUS VOLTAGE
INNER PARTS OF THIS SET CARRY "HAZARDOUS VOLTAGE". PERSONNEL OTHER THAN SKILLED SERVICE ENGINEERS MUST NOT TOUCH THEM.

7-A	7-E	UNPAID	7-A	E
E	E	COIN METER	ON	OFF
OFF	ON	50Hz	50Hz	
		60Hz	60Hz	
NOT USE	7-A	7-E	6A	
E	E	4A	5A	5A
0.5A	1A	2A	3A	3A

TOTAL OUT	TOTAL IN	ATTEND PAY	GAME COUNT
MEDAL IN	票品払い出し数	票品払い出し数	右
MEDAL OUT	PRIZE OUT	PRIZE OUT	右
両替 IN	× 100円	× 100円	左
合計	× 100円	× 10円	左

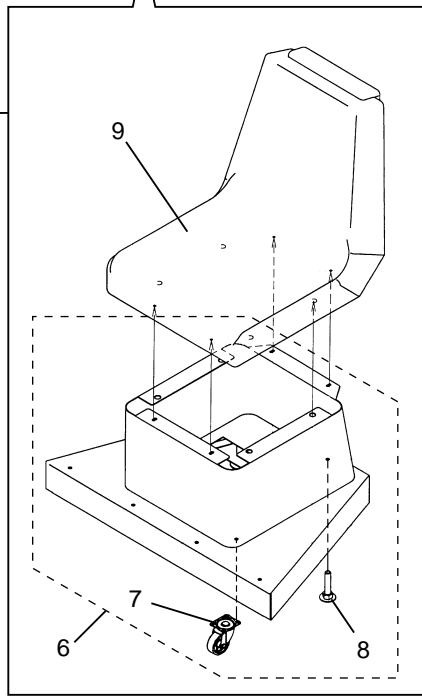
CRT METER SWITCH	MONAURAL	STEREO	SERVICE OUTLET AC100V 3A
SOUND VOLUME	CLEAR SWITCH	消磁 SWITCH	ON OFF OFF
SERVICE SWITCH	SEAT VOLUME	HOPPER ROTATION SWITCH	ON OFF L R
TEST SWITCH	DEGAUSSING SWITCH	MEMORY RESET SWITCH	MAIN SWITCH
ALL CLEAR SWITCH	SELECT SWITCH	ENTER SWITCH	MONITOR SWITCH
			MASTER RESET SWITCH

G1001324A

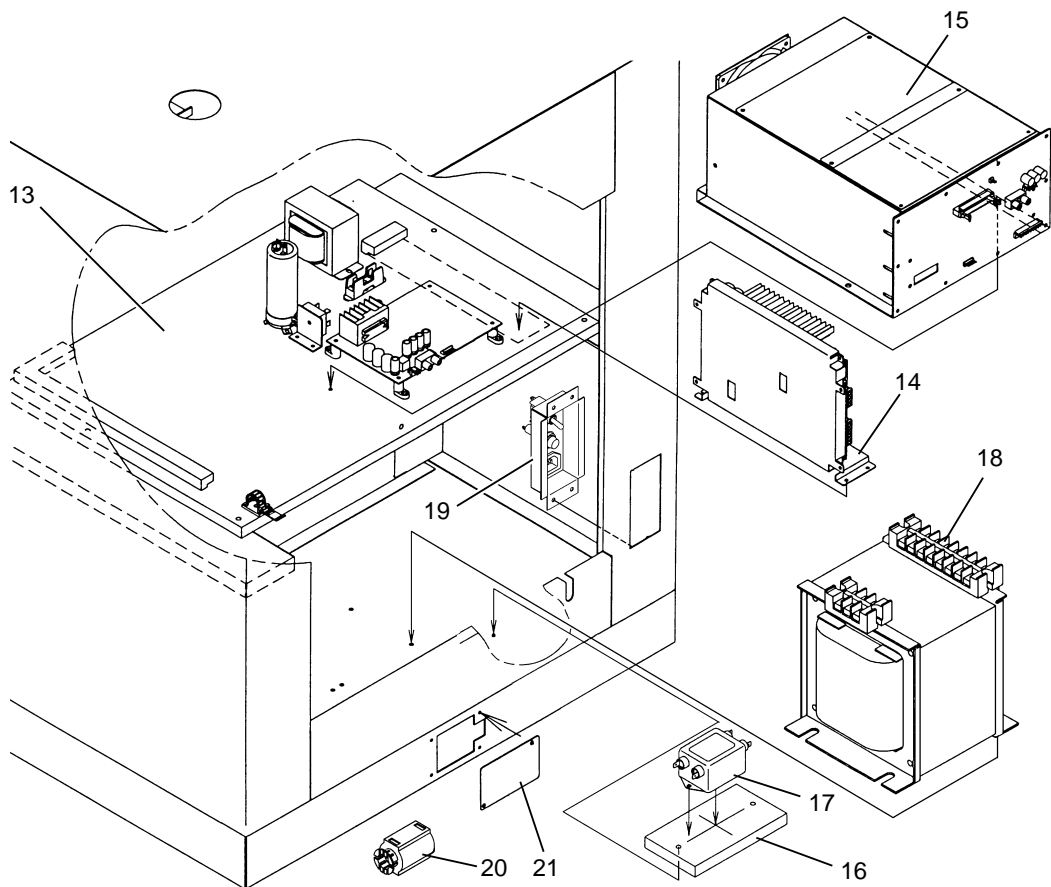
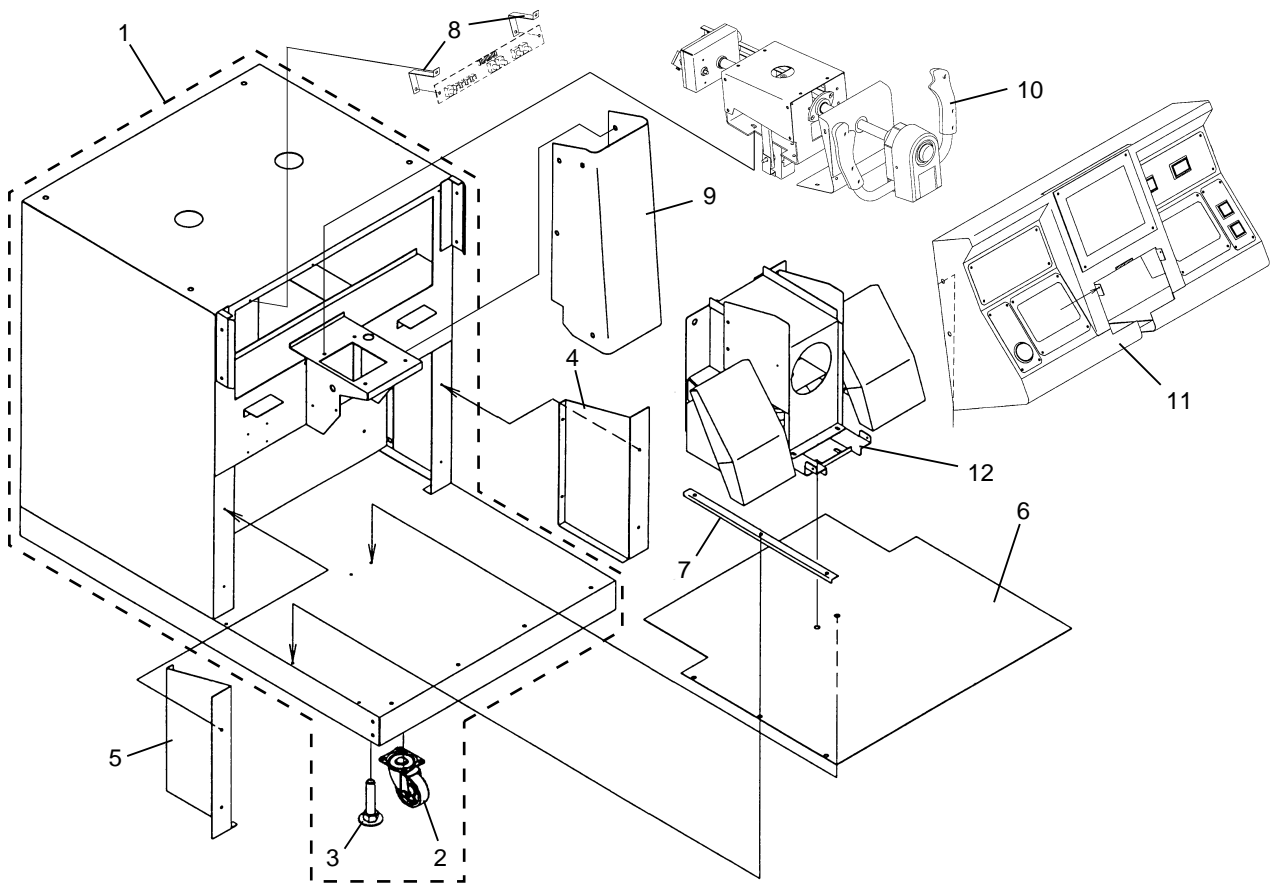
WARNING

Hazardous voltage can shock, burn or cause death.

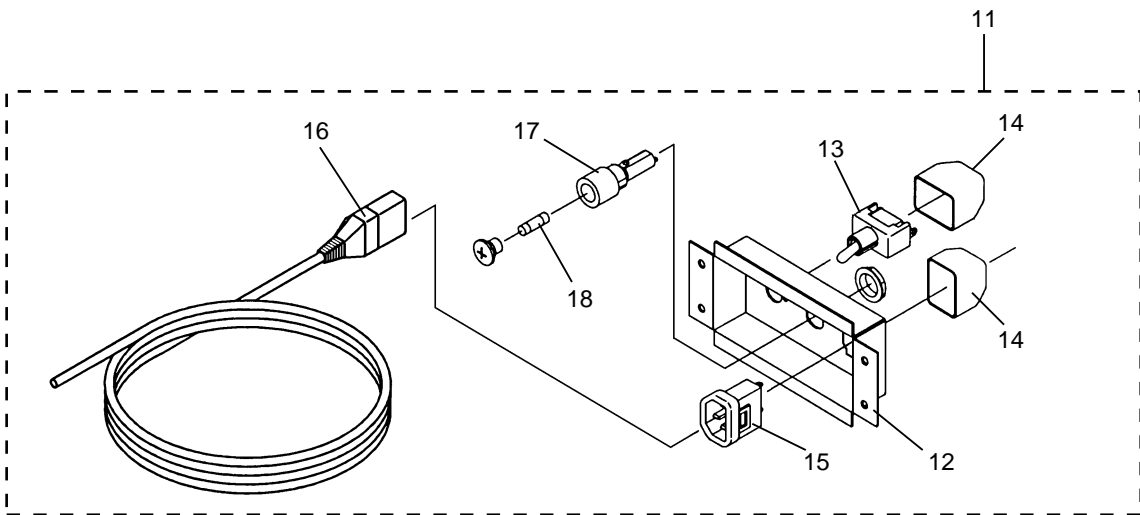
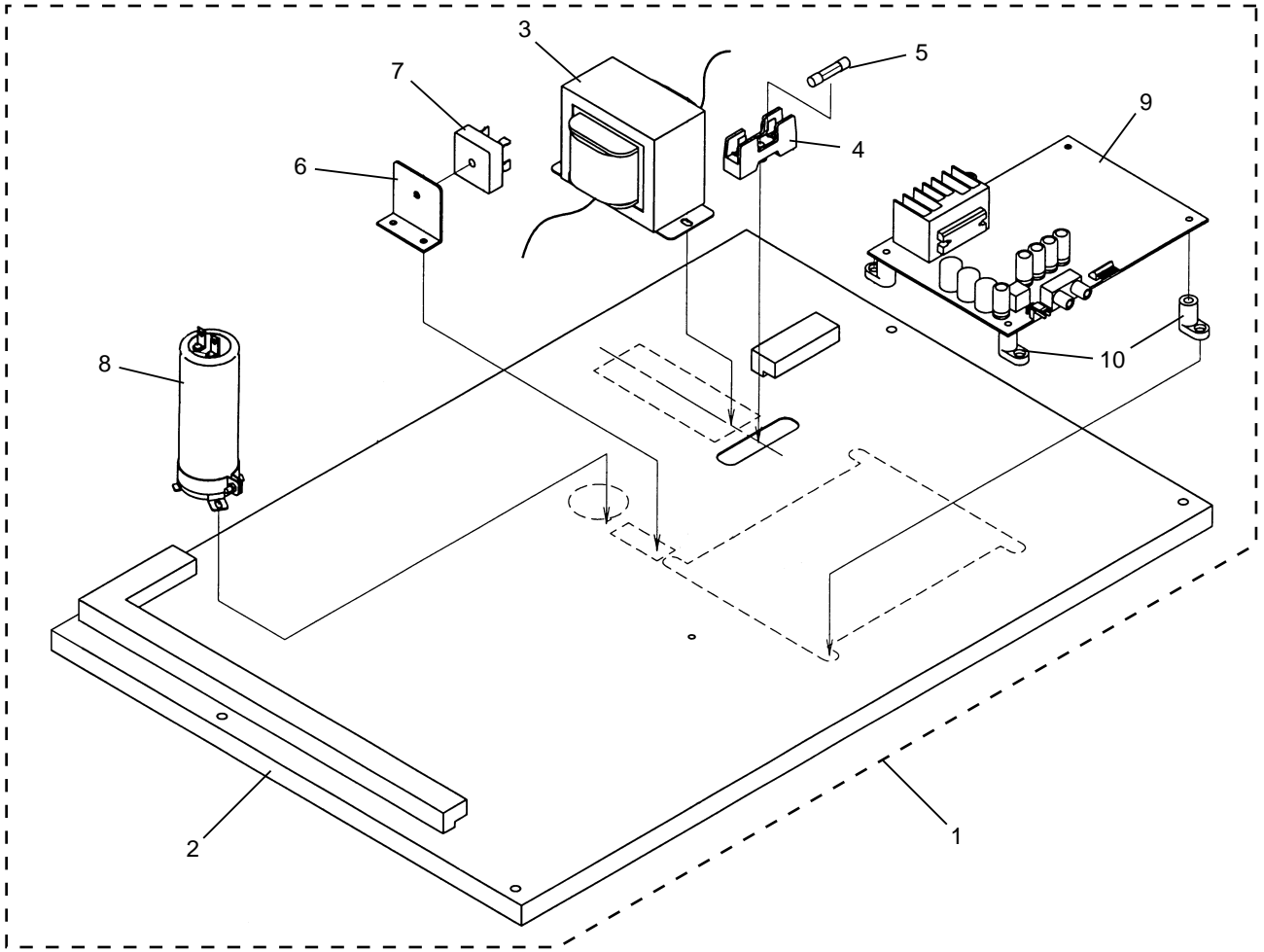
Do not open the lid.



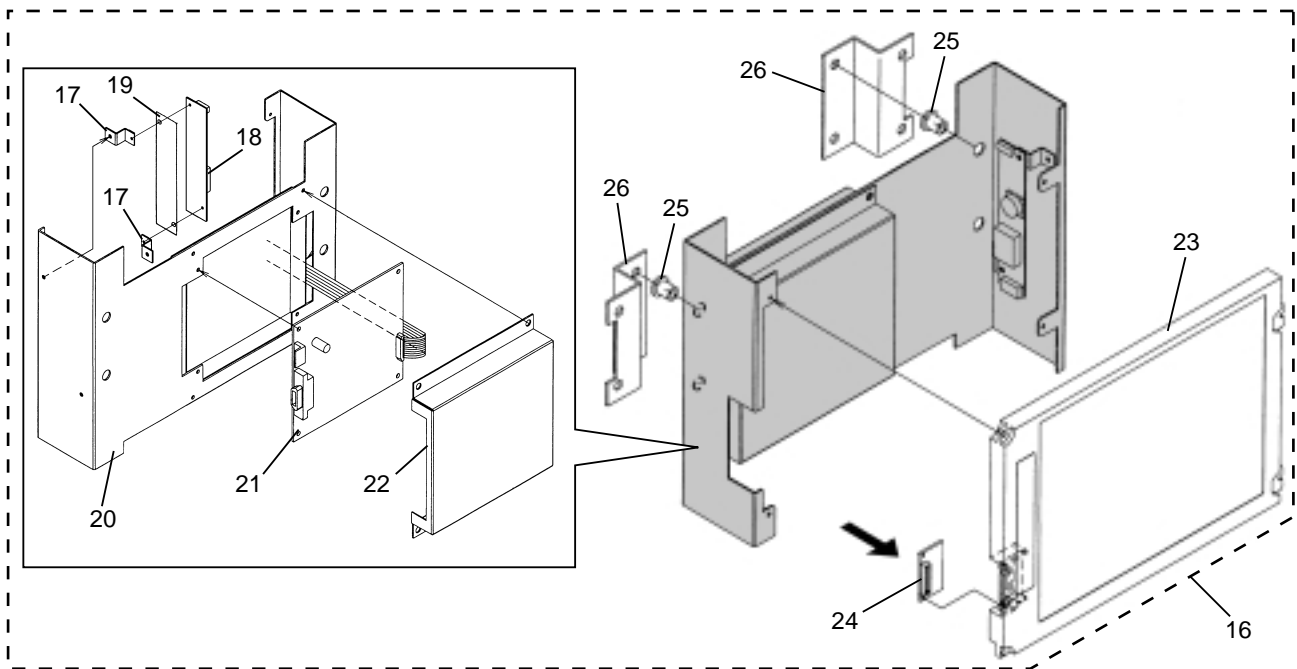
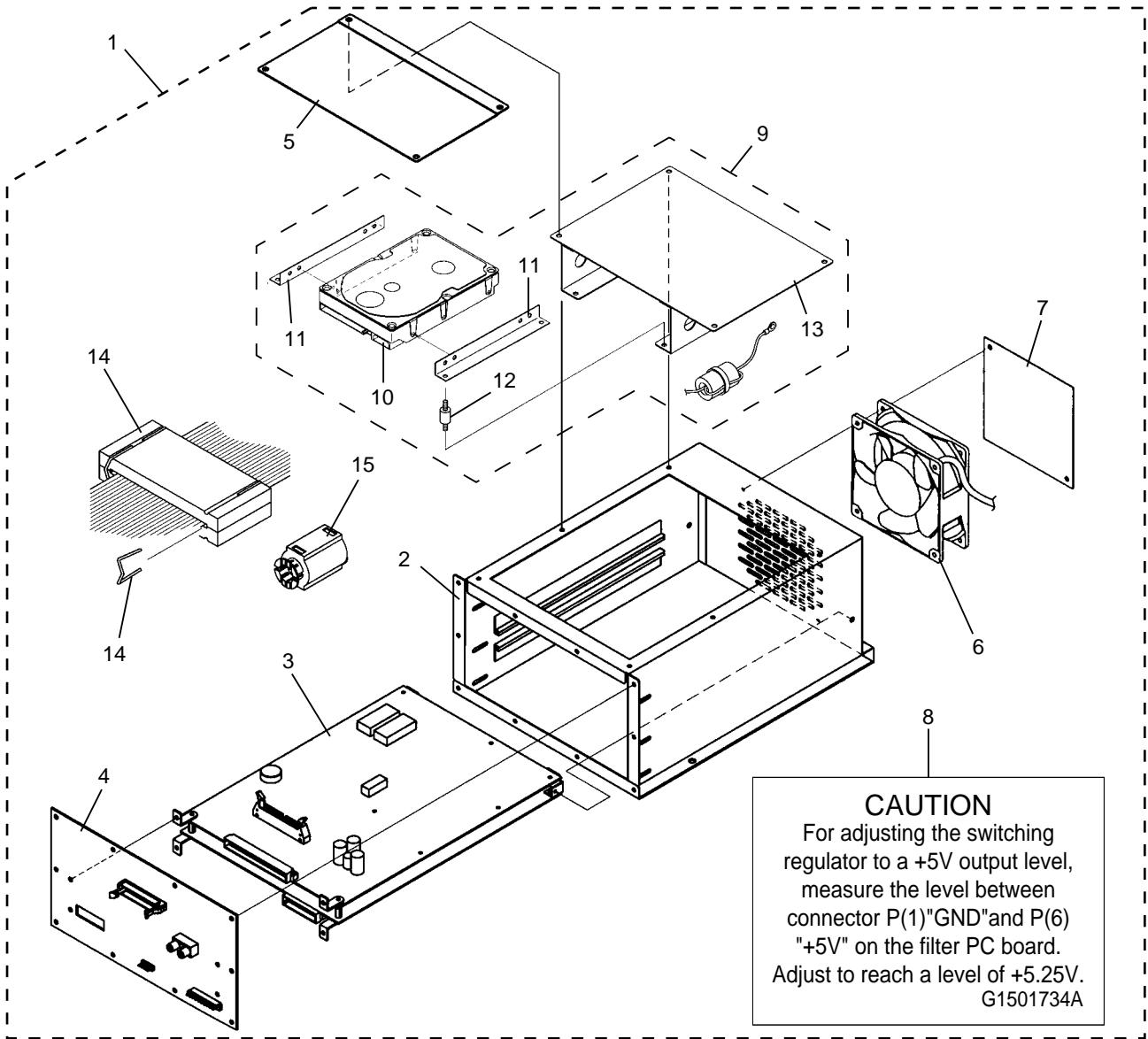
ITEM	PARTS No.	DESCRIPTION	
1	M90 04842A	MAIN CABINET ASSY-(EXP)	
2	M90 04843A	SIDE CABINET ASSY-(EXP)	
3	E30 14803A	SIDE BRACKET	
4	M90 04830A	VIDEO CABINET ASSY	
5	M90 04831A	SEAT CABINET ASSY	
6	E30 14749A	SEAT CABINET-(WITH PARTS)	
7	E50 60435A	CASTER	420S-N D=50
8	E50 60529B	ADJUSTER BOLT M16-(WITH NUT)	
9	F90 04936A	SEAT	
10	E30 14799A	SEAT BRACKET	
11	E30 14792A	MAT SUPPORT-B	
12	E30 14752A	BACK DOOR	
13	E50 00583A	LOCK-(SINGLE)	LY-1153
14	E30 00009A	LOCK PLATE	
15	G10 01324A	CABINET STICKER SHEET-(VER.2)	
16	G15 00171B	TRANSPORT STICKER-E	
17	G15 01765A	VOLTAGE WARNING STICKER-E	
18	G15 01755A	SIDE STICKER-L	
19	G15 01756A	SIDE STICKER-R-A	
20	G15 01757A	SIDE STICKER-R-B	
21	G15 01765A	DELIVERY CAUTION STICKER-E	



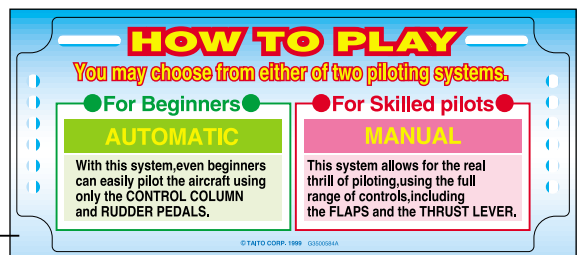
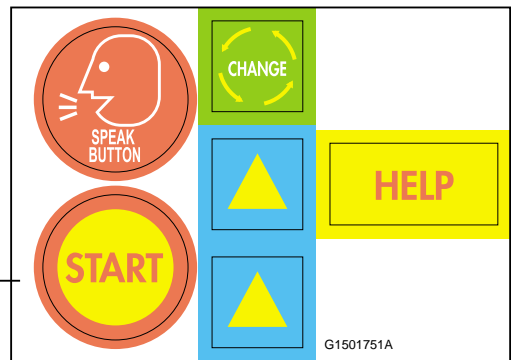
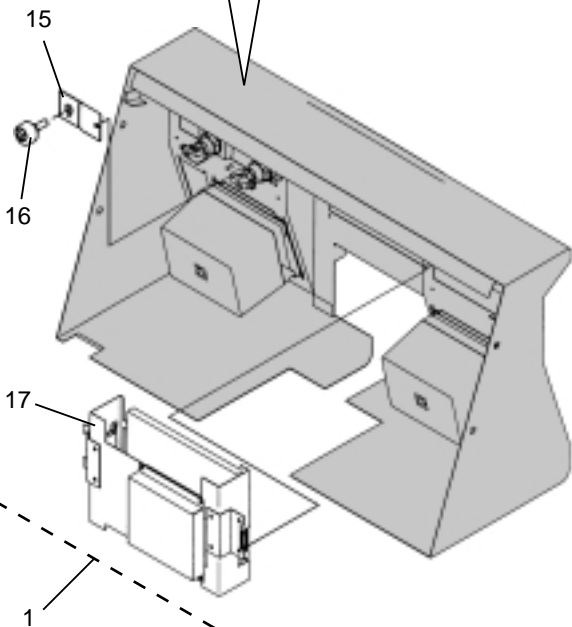
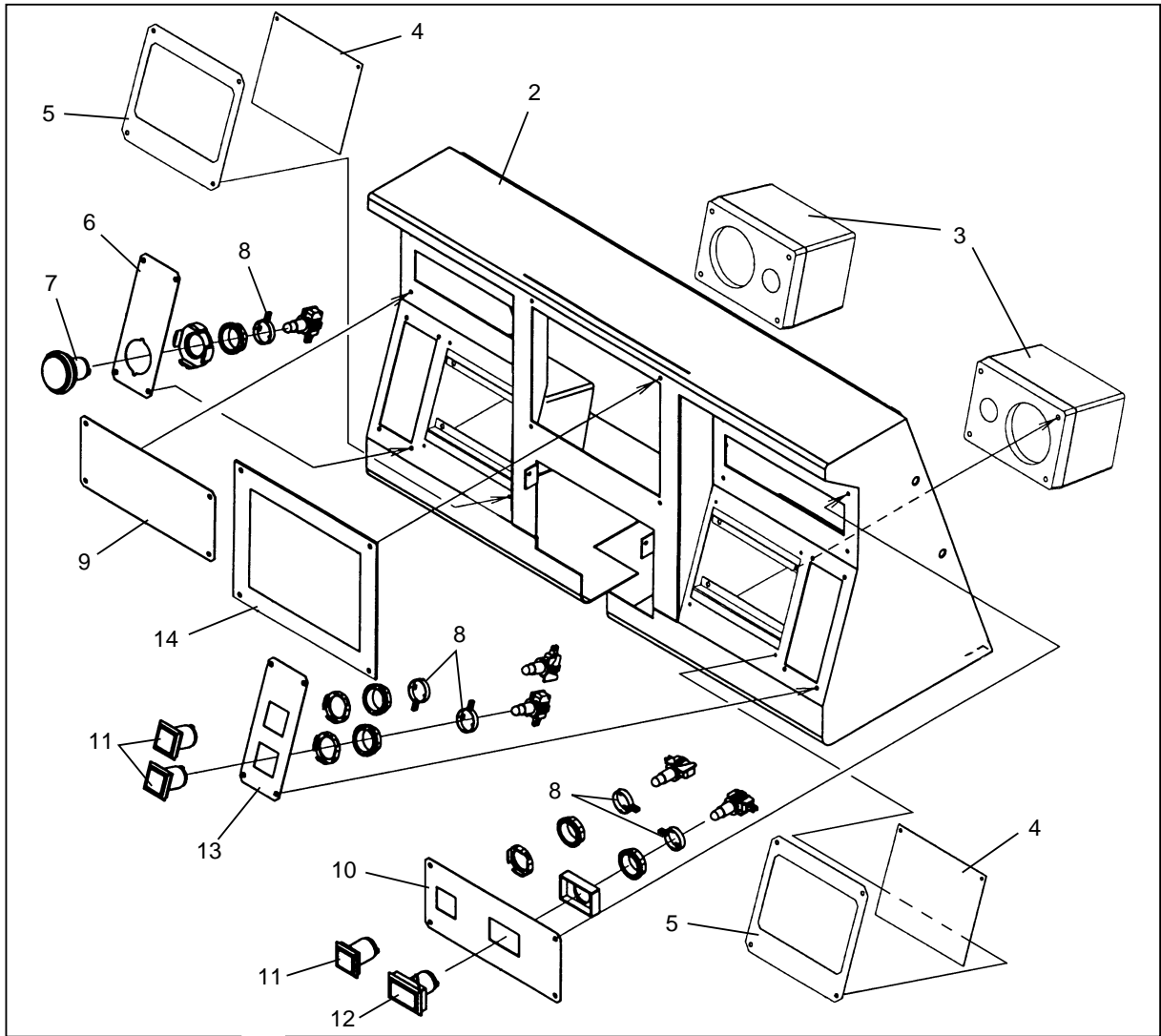
ITEM	PARTS No.	DESCRIPTION	
1	E30 14748A	CABINET-(WITH PARTS)	
2	E50 60435A	CASTER 420S-N D=50	
3	E50 60529B	ADJUSTER BOLT M16-(WITH NUT)	
4	E30 14771A	CABINET SIDE COVER-L	
5	E30 14772A	CABINET SIDE COVER-R	
6	F90 04933A	MAT	
7	E30 14791A	MAT SUPPORT-A	
8	E30 14817A	VR PCB SUPPORT	
9	E30 14770A	CABINET COVER	
10	M01 00264A	CONTROL WHEEL ASSY-(EXP)	
11	M90 04840A	CONTROL BOX ASSY-(EXP)	
12	M01 00258A	RUDDER PEDAL ASSY	
13	M90 04820A	ELECTRIC BASE ASSY	
14	M13 00027B	SWITCHING REGULATOR AAA-01A	
15	M90 04878A	SHIELD CASE ASSY-(EXP)	
16	D20 01766A	ELECTRIC BASE-B	
17	C18 00059A	NOISE FILTER 250V 10A	SUP-E10H-EPR-0
18	C10 00461A	MULTI TRANSFORMER	100V 5A
19	M90 04841A	SWITCH BOX ASSY-(EXP)	
20	C11 01315A	FERRITE CORE	FCD-2530
21	E30 14644A	CABLE MASK	
	L90 04277A	AC HARNESS	
	L10 00340A	MAIN HARNESS	
	L90 04288A	VIDEO 29 HARNESS	
	L90 04290A	VIDEO CABLE-(LVDS-26C)-(L=1.8M)	
	L90 04237A	AUDIO CABLE	
	L90 04325A	MULTI TRANS HARNESS	



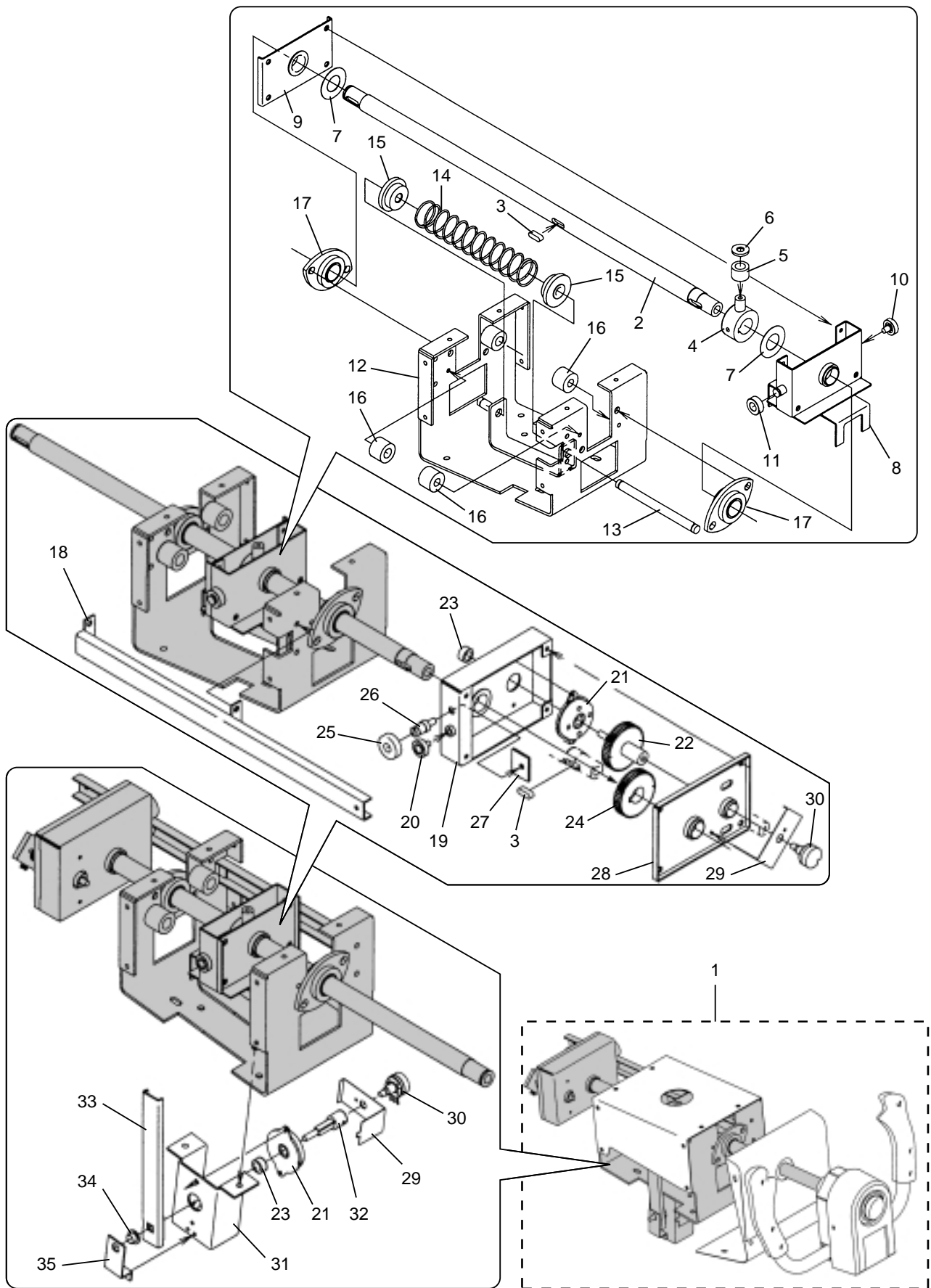
ITEM	PARTS No.	DESCRIPTION	
1	M90 04820A	ELECTRIC BASE ASSY	
2	D20 01765A	ELECTRIC BASE-A	
3	C10 00520A	TRANSFORMER	AC11.5V 6A
4	C05 50186A	FUSE HOLDER-(WITHOUT COVER)-1P	F-7101
5	C16 00038A	FUSE-(6A 125V)-(6.3X30)	
6	E30 09709A	R BRACKET	
7	A04 00057A	RECTIFIER	BR154/MP154
8	A10 04292A	CAP.ELEC.-(27000UF 50V)-(LUG)	50LASN
9	K91 X0768B	AMP P.C.B.ASSY	LANDING HIGH JAPAN
10	F90 00668A	RES LOCK	OL-E3
	L90 04282A	ELECTRIC BASE HARNESS	
	L90 04278A	AUDIO POWER HARNESS	
11	M90 04841A	SWITCH BOX ASSY-(EXP)	
12	E30 14954A	SWITCH BOX-(EXP)	
13	C02 00555A	TOGGLE SWITCH	ST125A
14	F90 03168A	MAIN SWITCH COVER	
15	C05 51019A	AC INLET	NC-179-F4.8
16	C07 00334A	AC CORD	AC 250V 10A
17	C05 50184A	FUSE HOLDER	F-130
18	C16 00049A	FUSE-(5A 250V)-(6.3X30)	
	L90 04324A	INLET HARNESS-(EXP)	



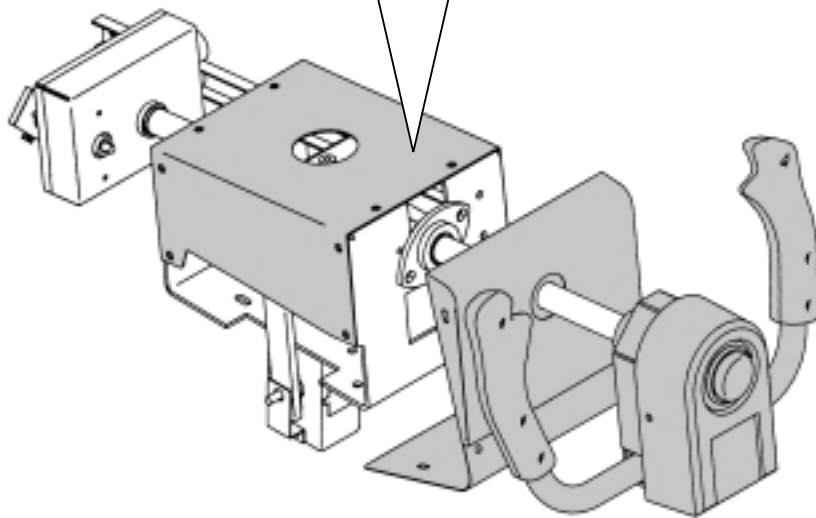
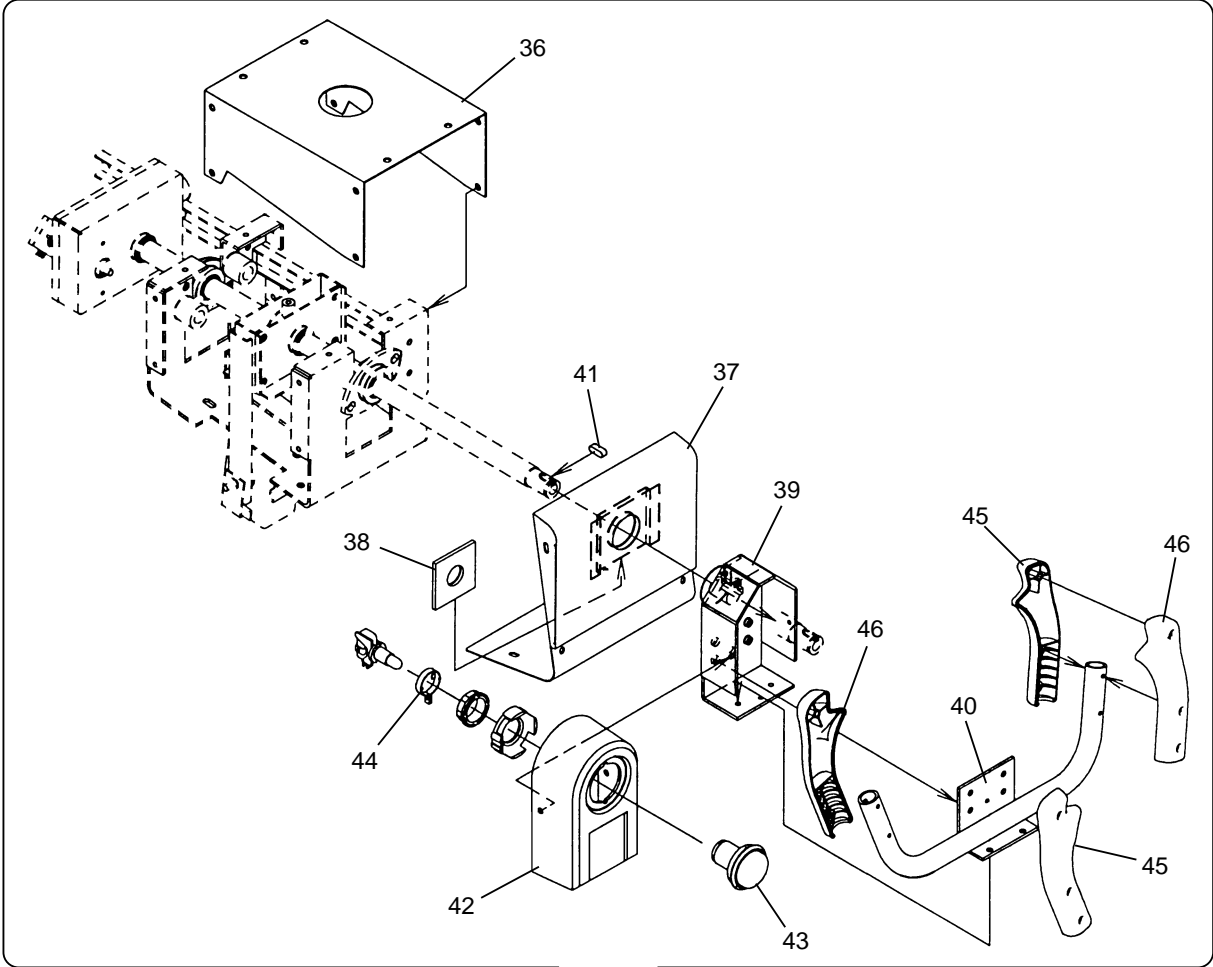
ITEM	PARTS No.	DESCRIPTION	
1	M90 04878A	SHIELD CASE ASSY-(EXP)	LANDING HIGH JAPAN
2	H90 00603A	SHIELD CASE-(WITH PARTS)	
3	M43 J0741A	MAIN P.C.B.ASSY	LANDING HIGH JAPAN
4	K91 X0776A	JC101 FILTER P.C.B.ASSY	LANDING HIGH JAPAN
5	E30 14283A	SHIELD DOOR	
6	C12 00059A	FAN	CNJ55B5
7	E30 14284A	PUNCHING PLATE	
8	G15 01734A	VOLTAGE STICKER-E	5.25V
	L50 00218A	FRC 40 HARNESS	
	L90 04283A	HDD HARNESS	
	L90 04148A	FAN HARNESS	
9	M90 04879A	HARD DISK ASSY-(EXP)	LANDING HIGH JAPAN
10	M90 04890A	HARD DISK-(3.5" E-IDE)-(4.3GB)	LANDING HIGH JAPAN-EXP
11	E30 13885A	HDD FRAME	
12	F90 04570A	ISOLOSS	MM-200-UC08-V
13	E3014780A	HDD BASE	
	L90 04146A	GND HARNESS	
14	C11 01383A	FERRITE CORE-(WITH ACCESSORY)	FP-64-29-6.35-P
15	C11 01273A	FERRITE CORE	FCD-1630
16	M90 04823A	LCD ASSY	
17	E30 14781A	INVERTER BRACKET	
18	K91 X0774A	LCD INVERTER PCB	4W CXA-L0612-VJL
19	F90 04927A	INSULATOR	
20	E30 14782A	LCD BRACKET-A	
21	K91 X0778A	LVDS RECEIVER P.C.B.ASSY	
22	E30 14783A	LCD BRACKET-B	
23	M11 00035A	COLOR LCD-(8.4 INCH)	LQ084V1DG21
24	K91 X0777A	JOINT P.C.B.ASSY	
25	F90 02218A	WELL NUT-M4	B-832
26	E30 14784A	LCD BRACKET-C	
	L50 00222A	FFC 32 HARNESS	



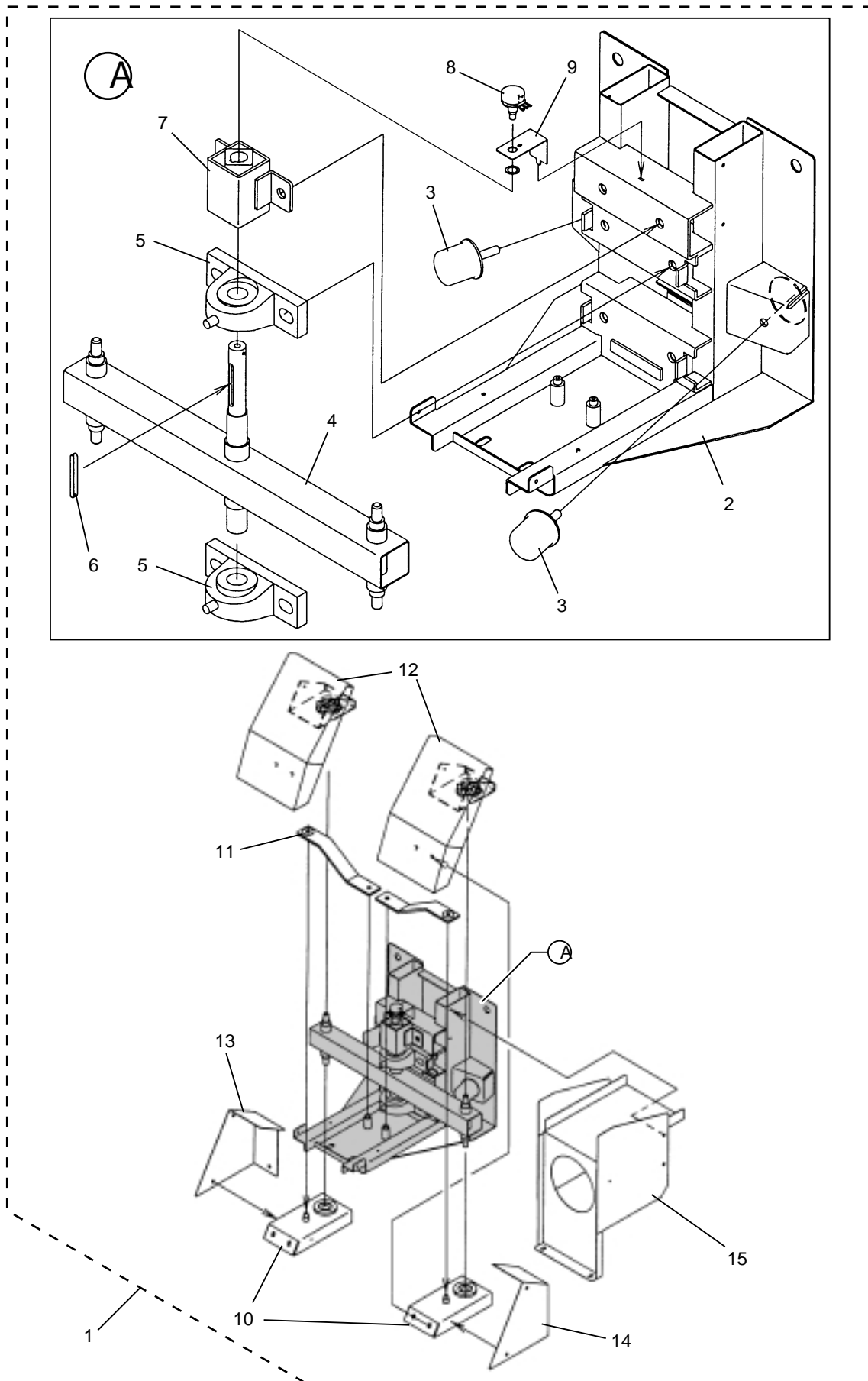
ITEM	PARTS No.	DESCRIPTION	
1	M90 04840A	CONTROL BOX ASSY-(EXP)	
2	E30 14774A	CONTROL BOX	
3	M10 00176A	SPEAKER MINI BOX SYSTEM-(4 OHM 10W)	F77A70-8
4	E30 14793A	PUNCHING PLATE	
5	E30 14805A	SPEAKER PLATE	
6	E30 14776A	CONTROL PANEL-L1	
7	C02 00433A	LAMP SWITCH-(THIN TYPE)	OBSA-45 UM DC-12V
8	E50 60590A	SWITCH SUPPORT RING	OBSA-BK
9	G95 01092A	CONTROL PANEL-L2	
10	G95 01093A	CONTROL PANEL-R1	
11	C02 00427A	LAMP SWITCH-(THIN TYPE)	OBSA-30 UK DC-12V
12	C02 00435A	LAMP SWITCH-(THIN TYPE)	OBSA-45 UK DC-12V
13	G95 01094A	CONTROL PANEL-R2	
14	G95 01091A	LCD PANEL COVER	
15	E30 14813A	VOLUME BRACKET-(LCD)	
16	A21 09074A	VARIABLE RESISTOR-(50K-B)	RV20YN-20SB503(TOCOS)
17	M90 04823A	LCD ASSY	
18	G15 01751A	BUTTON FILM STICKER SHEET	
19	G35 00584A	INSTRUCTION STICKER-A-(EXP)	
	L90 04291A	VOLUME HARNESS	
	L90 04280A	CONTROL HARNESS	



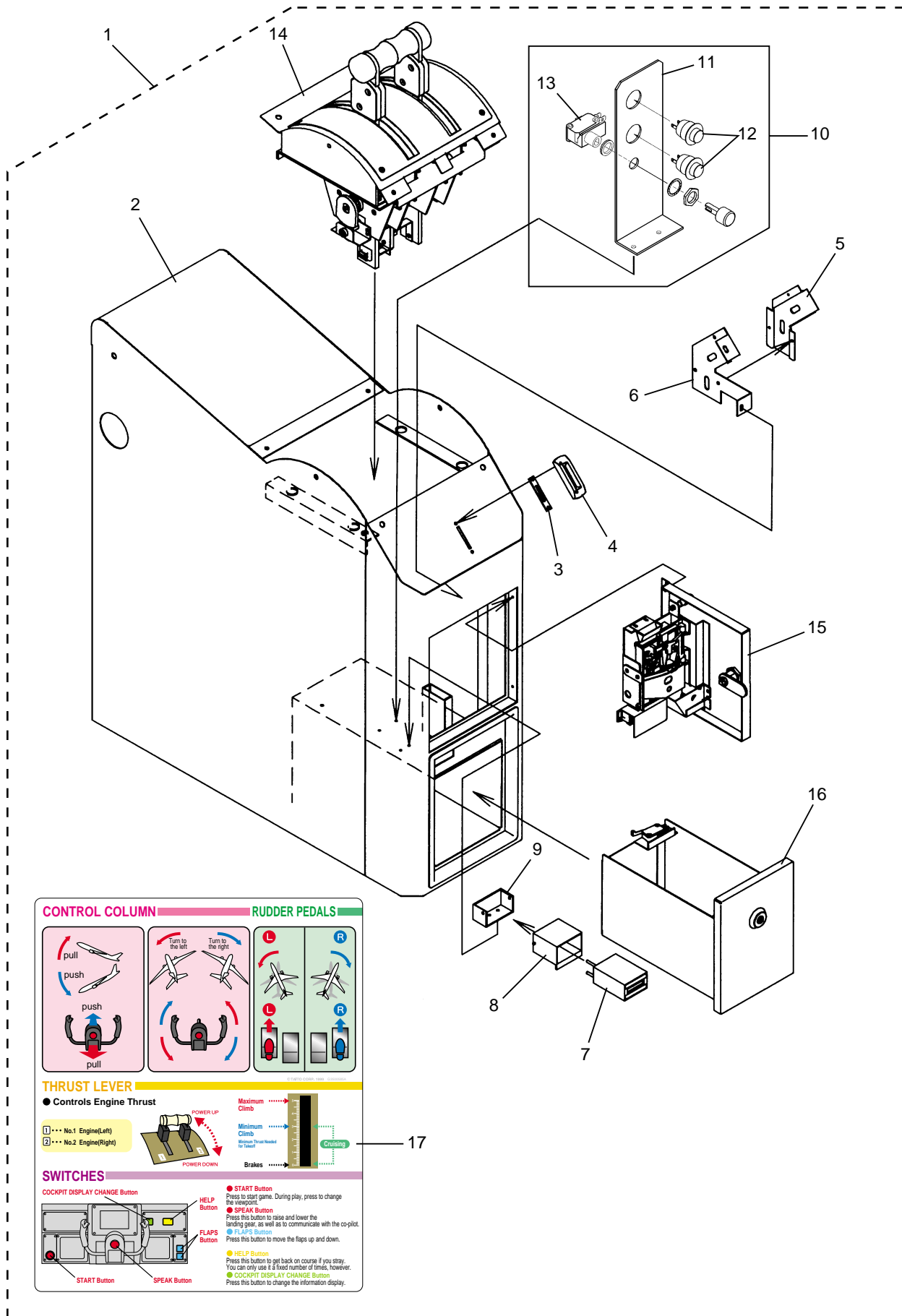
ITEM	PARTS No.	DESCRIPTION	
1	M01 00264A	CONTROL WHEEL ASSY-(EXP)	
2	E90 01184B	WHEEL SHAFT	
3	E10 01301A	KEY	6X6X18
4	E10 01608A	STOPPER COLLAR	
5	F90 04946A	WHEEL STOPPER-B	
6	E30 14952A	PLAIN WASHER	5.1X17X1.6T
7	F90 01990A	THRUST WASHER	TW2040
8	E90 01191A	STOPPER BRACKET-A	WITH BUSH(LFF2010)
9	E30 14807A	STOPPER BRACKET-B	WITH BUSH(LFF2010)
10	E60 00261A	BEARING A-19-B1	
11	F90 04935A	ROLLER	
12	E30 14802A	SHAFT BASE	
13	E10 01607A	SPRING SHAFT	
14	E40 00608A	CONTROL WHEEL SPRING	
15	F90 04951A	SPRING GUIDE	WITH BUSH(LFF-1012)
16	F90 04945A	WHEEL STOPPER-A	
17	F90 04934A	OILES PILLOW	80FL-20
18	E30 14798A	ROLLER GUIDE	
19	E30 14956A	END BRACKET	WITH BUSH(LFF2010)
20	E60 00261A	BEARING A-19-B1	
21	H90 00609A	ROTARY DAMPER	FDT-47A-T0001
22	E70 00217C	GEAR-B	
23	F90 04926A	DAMPER SPACER	
24	E70 00216A	GEAR-A	
25	E60 00167A	BEARING 6000ZZ	
26	E10 01623A	BEARING SHAFT	
27	E30 14953A	TAP PLATE	
28	E30 14779A	END SUPPORT	WITH BUSH
29	E30 14815A	VOLUME BRACKET-(WHEEL)	
30	A21 02541A	VARI.RES.-(5K-B)	EWSWI1LF20E53
31	E30 14777A	DAMPER BRACKET	
32	E10 01605A	DAMPER SHAFT	
33	E90 01175A	DAMPER LINK	
34	F90 02093A	OILES FLANGE BUSH	80F-0803
35	E30 14778A	DAMPER SUPPORT	



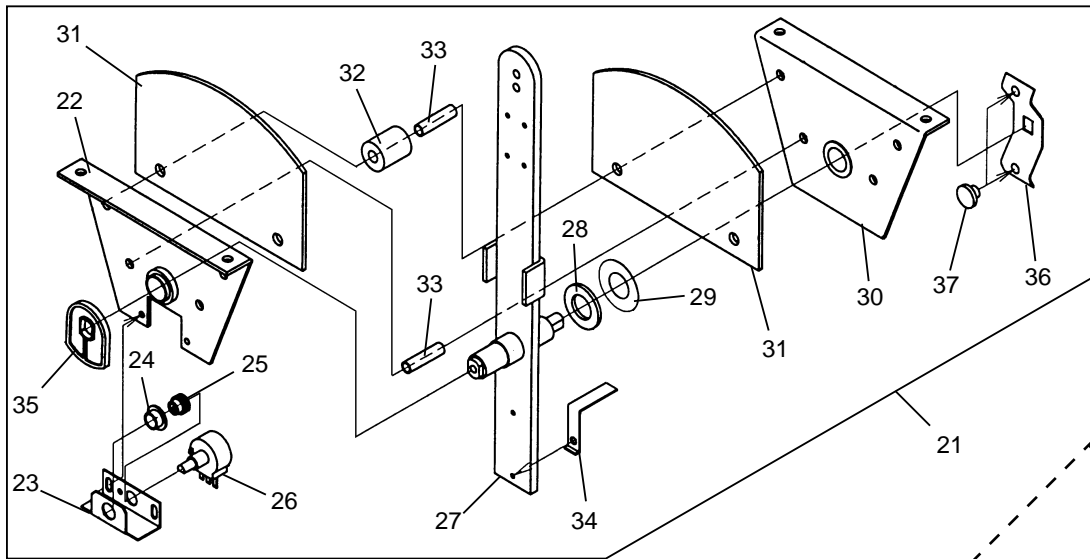
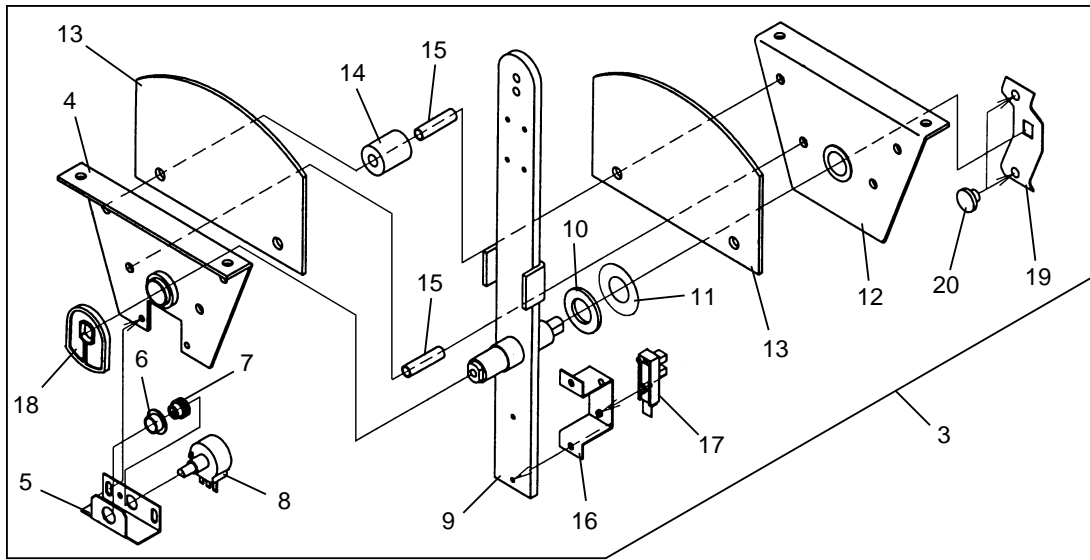
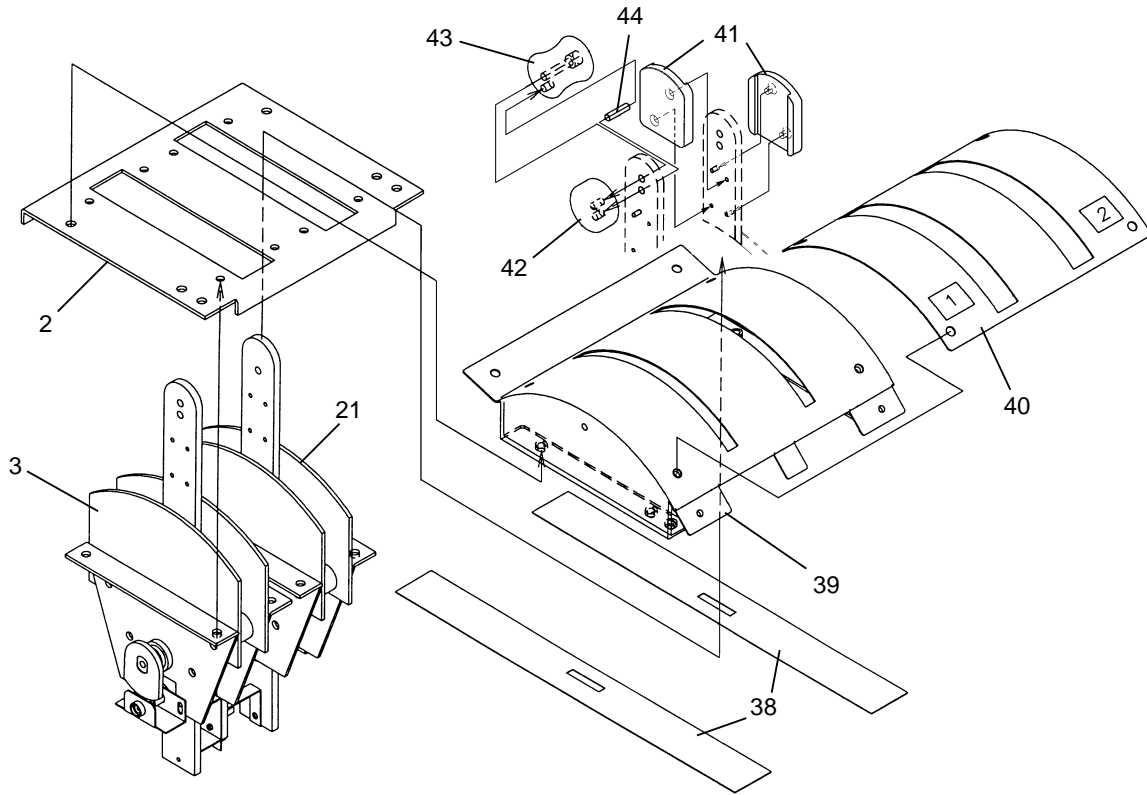
ITEM	PARTS No.	DESCRIPTION	
36	E30 14769A	BASE SUPPORT	
37	E30 14775A	CONTROL BOX COVER	
38	F90 04932A	MASK PLATE	
39	E90 01183A	WHEEL BASE	
40	E90 01174A	CONTROL WHEEL	
41	E10 01301A	KEY	6X6X18
42	F90 04942A	WHEEL COVER	
43	C02 00433A	LAMP SWITCH-(THIN TYPE)	OBSA-45 UM DC-12V
44	E50 60590A	SWITCH SUPPORT RING	OBSA-BK
45	F90 04943A	WHEEL GRIP-A	
46	F90 04944A	WHEEL GRIP-B	
	L90 04281A	CONTROL WHEEL HARNESS	
	L90 04291A	VOLUME HARNESS	
	L90 04292A	WHEEL SHAFT HARNESS	



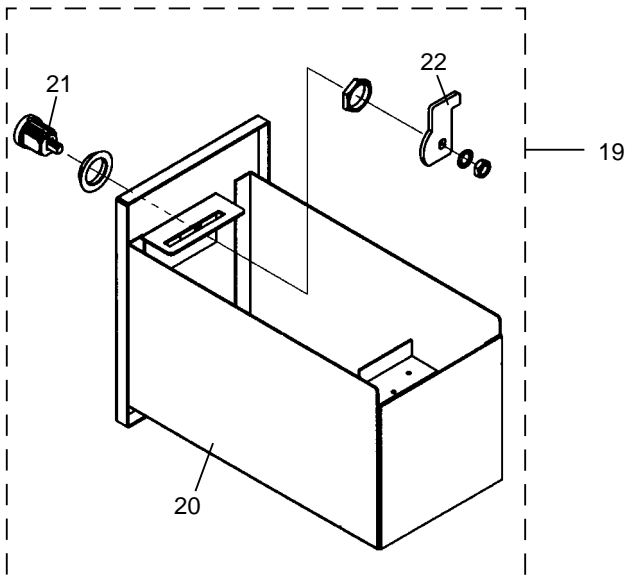
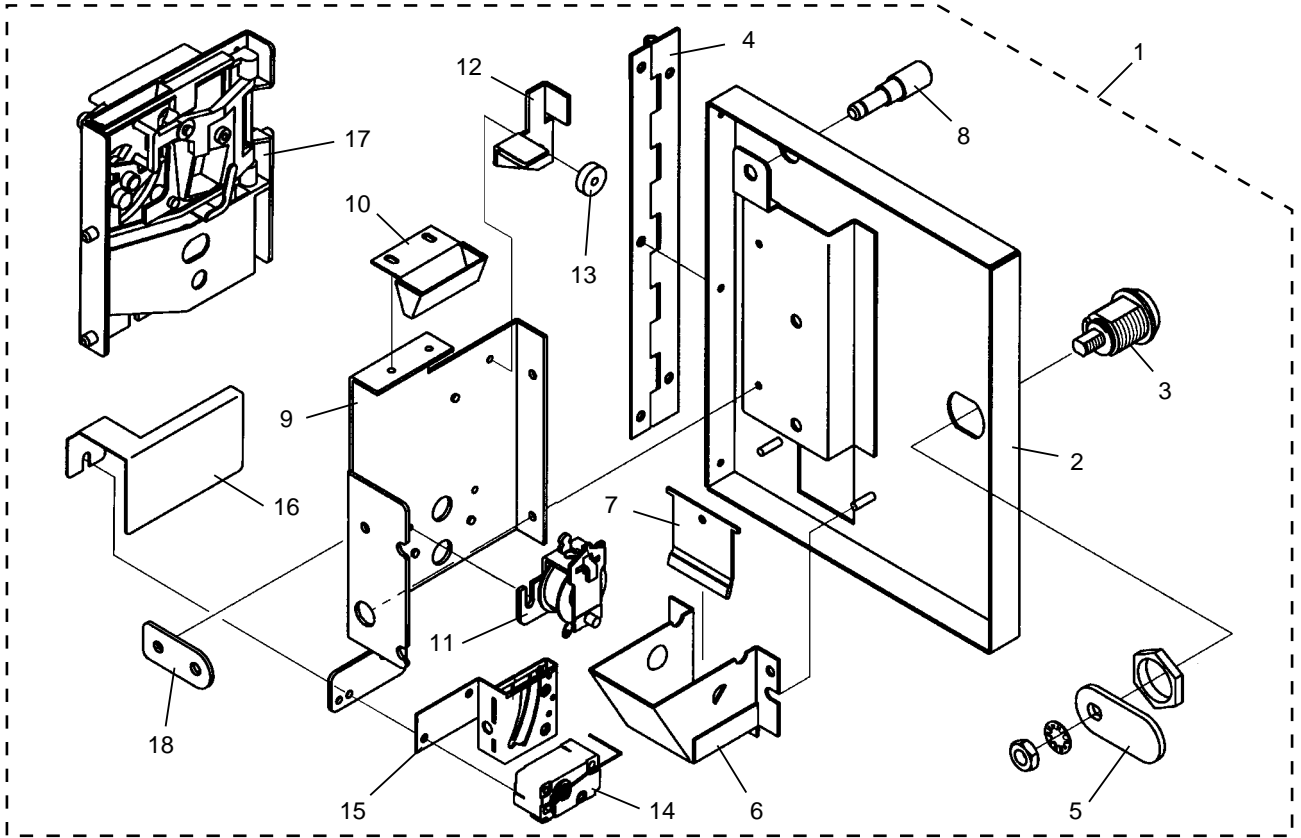
ITEM	PARTS No.	DESCRIPTION	
1	M01 00258A	RUDDER PEDAL ASSY	
2	E90 01178A	PEDAL MECHA BASE	
3	F90 04939A	STOPPER RUBBER	KI-40
4	E90 01179A	PEDAL SHAFT	
5	E60 00267A	PILLOW BLOCK	UCP204JE4(KOYO)
6	E10 01606A	KEY	5X5X50
7	H90 00610A	TORSION RUBBER	RN-AM27X60B
8	A21 02541A	VARI.RES.-(5K-B)	EWSWI1LF20E53
9	E30 14816A	VOLUME SUPPORT	
10	E90 01180B	PEDAL SUPPORT	
11	E90 01177A	LINK BAR	
12	E90 01181A	RUDDER PEDAL	
13	E30 14795A	PEDAL SHIELD-L	
14	E30 14796A	PEDAL SHIELD-R	
15	E30 14794A	PEDAL MECHA COVER	
	L90 04285A	RUDDER PEDAL HARNESS	



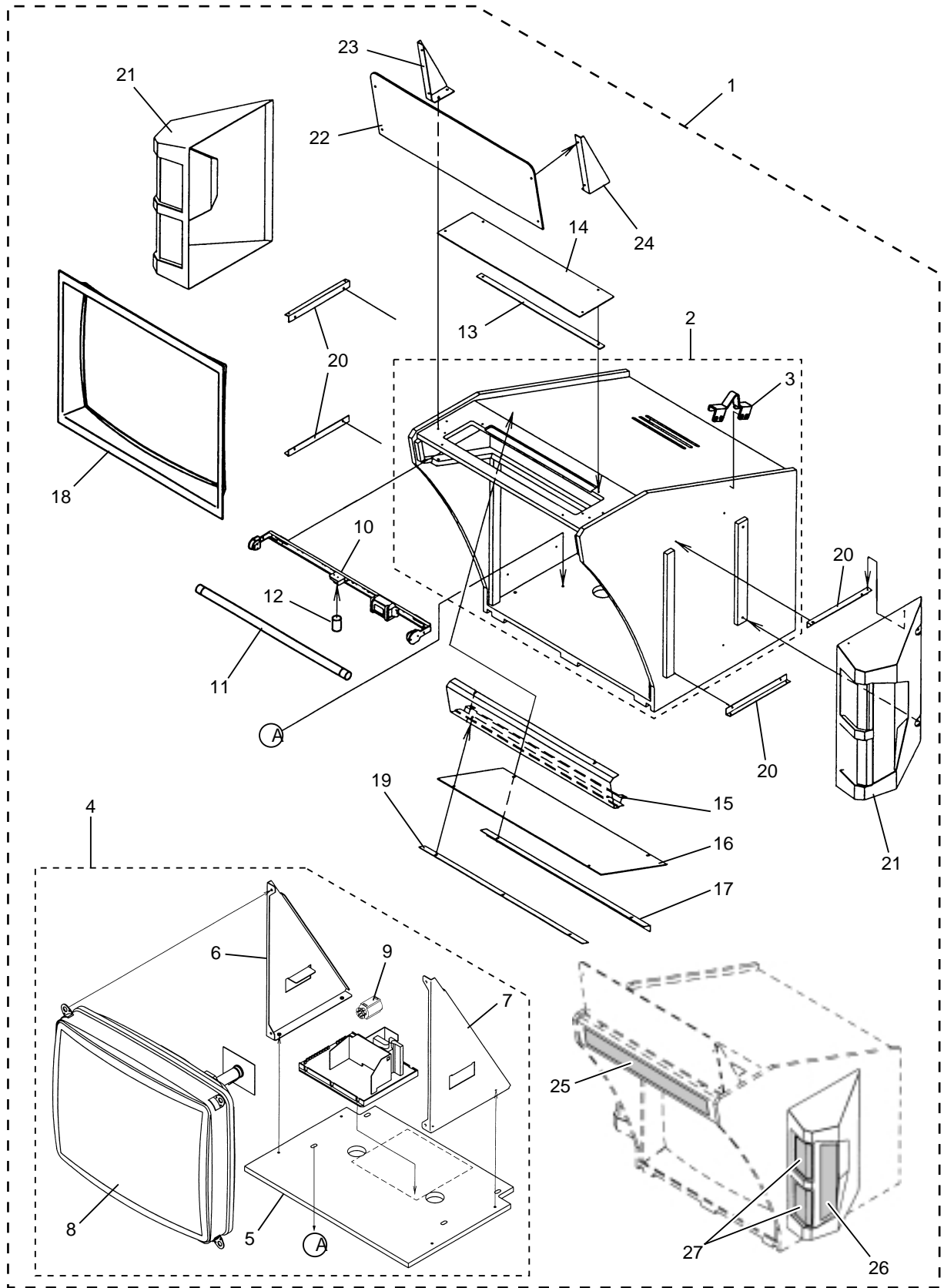
ITEM	PARTS No.	DESCRIPTION		
1	M90 04843A	SIDE CABINET ASSY-(EXP)		
2	E30 14750A	SIDE CABINET		
3	E30 14440A	COIN ENTRY PLATE-(25CENT)		
4	F90 04277B	COIN ENTRY MOLDING	GRAY	
5	E30 14155A	COIN CHUTE-A		
6	E30 14156A	COIN CHUTE-B		
7	C17 00026A	COUNTER-(DC12V) NX-06R0A8		
8	F90 04275B	COUNTER COVER		
9	F90 04276B	COUNTER HOLDER		
10	M90 04828A	CENTRAL CONTROL ASSY		
11	E30 14773A	CENTRAL BRACKET		
12	C02 00313A	PUSH SWITCH	DS-412(2P)	
13	C02 00033A	PUSH BUTTON SWITCH	VAQ-4R	OMRON
	L90 04279A	CENTRAL CONTROL HARNESS		
14	M90 04829A	THRUST LEVER ASSY-(MAIN)		
15	M05 00347A	REJECTOR DOOR ASSY-(25CENT FREE)		
16	M04 00104A	CASH BOX ASSY		
17	G35 00585A	INSTRUCTION STICKER-B-(EXP)		
	L90 04286A	SIDE CABINET HARNESS		



ITEM	PARTS No.	DESCRIPTION	
1	M90 04829A	THRUST LEVER ASSY-(MAIN)	
2	E30 14785A	LEVER BASE BRACKET	
3	M01 00260A	THRUST LEVER ASSY-L	
4	E30 14786B	LEVER BRACKET-L	WITH BUSH(LFF1610)
5	E30 14814A	VOLUME BRACKET-(THRUST)	
6	F90 01798A	OILES FLANGE BUSH	80F-0905
7	F90 04234A	GEAR B	
8	A21 02541A	VARI.RES.-(5K-B)	EWSWI1LF20E53
9	E90 01182A	THRUST LEVER	
10	P50 30004B	PLAIN WASHER	5.5X22X1.6T
11	F90 04925A	THRUST WASHER	R-TW1735
12	E30 14787A	LEVER BRACKET-R	WITH BUSH(LFF1610)
13	F90 04931A	MASK GUIDE	
14	F90 04940A	THRUST STOPPER	
15	P60 10630A	SPACER	6X30
16	E30 14788A	LEVER SENSOR BRACKET	
17	A90 00230A	PHOTO SENSOR	TLP1201-A
18	F90 04710A	GEAR-A	
19	E40 00609A	RESIST SPRING	
20	F90 04947A	THRUST PIN	
21	M01 00261A	THRUST LEVER ASSY-R	
22	E30 14786B	LEVER BRACKET-L	WITH BUSH(LFF1610)
23	E30 14814A	VOLUME BRACKET-(THRUST)	
24	F90 01798A	OILES FLANGE BUSH	80F-0905
25	F90 04234A	GEAR B	
26	A21 02541A	VARI.RES.-(5K-B)	EWSWI1LF20E53
27	E90 01182A	THRUST LEVER	
28	P50 30004B	PLAIN WASHER	5.5X22X1.6T
29	F90 04925A	THRUST WASHER	R-TW1735
30	E30 14787A	LEVER BRACKET-R	WITH BUSH(LFF1610)
31	F90 04931A	MASK GUIDE	
32	F90 04940A	THRUST STOPPER	
33	P60 10630A	SPACER	6X30
34	E30 14789A	LEVER SENSOR PLATE	
35	F90 04710A	GEAR-A	
36	E40 00609A	RESIST SPRING	
37	F90 04947A	THRUST PIN	
38	F90 04930A	LEVER MASK	
39	E30 14751A	SIDE TOP PLATE	
40	G15 01754A	LEVER TOP SHEET	
41	F90 04938A	SIDE PLATE	
42	F90 04928A	LEVER GRIP-A	
43	F90 04929A	LEVER GRIP-B	
44	P63 10520A	PARALLEL PIN	5X20
	L90 04287A	THRUST LEVER HARNESS	



ITEM	PARTS No.	DESCRIPTION	
1	M05 00347A	REJECTOR DOOR ASSY-(25CENT FREE)	
2	E30 14797A	REJECTOR DOOR	
3	E50 00582A	LOCK & KEY SINGLE	LY-1153
4	E50 60565A	DOOR HINGE	
5	E30 00009A	LOCK PLATE	
6	E30 09248A	CUP	
7	E30 03641A	SHUTTER	
8	E10 00928A	CANCEL ROD	
9	E30 13387A	REJECTOR HOLDER	
10	E30 09953A	COIN GUIDE	
11	C11 00802A	COIN LOCKOUT COIL DC-12V	MC-136D
12	E30 12094A	CANCEL LEVER	
13	E10 01508A	SPACER	
14	C02 00533A	MICRO SWITCH	E53-00R-009A
15	E30 13243A	M.S. COIN GUIDE	LARGE
16	E30 00180A	ACTUATOR COVER	
17	E50 40122A	REJECTOR-(25CENT)-(FREE)	AD-81P
18	E30 13221A	REJECTOR PLATE	
	L90 04059A	REJECTOR HARNESS	
19	M04 00104A	CASH BOX ASSY	
20	E30 14645A	CASH BOX	
21	E50 00609A	Z LOCK (LARGE RING)	
22	E30 13471A	LOCK PLATE	(Z LOCK)

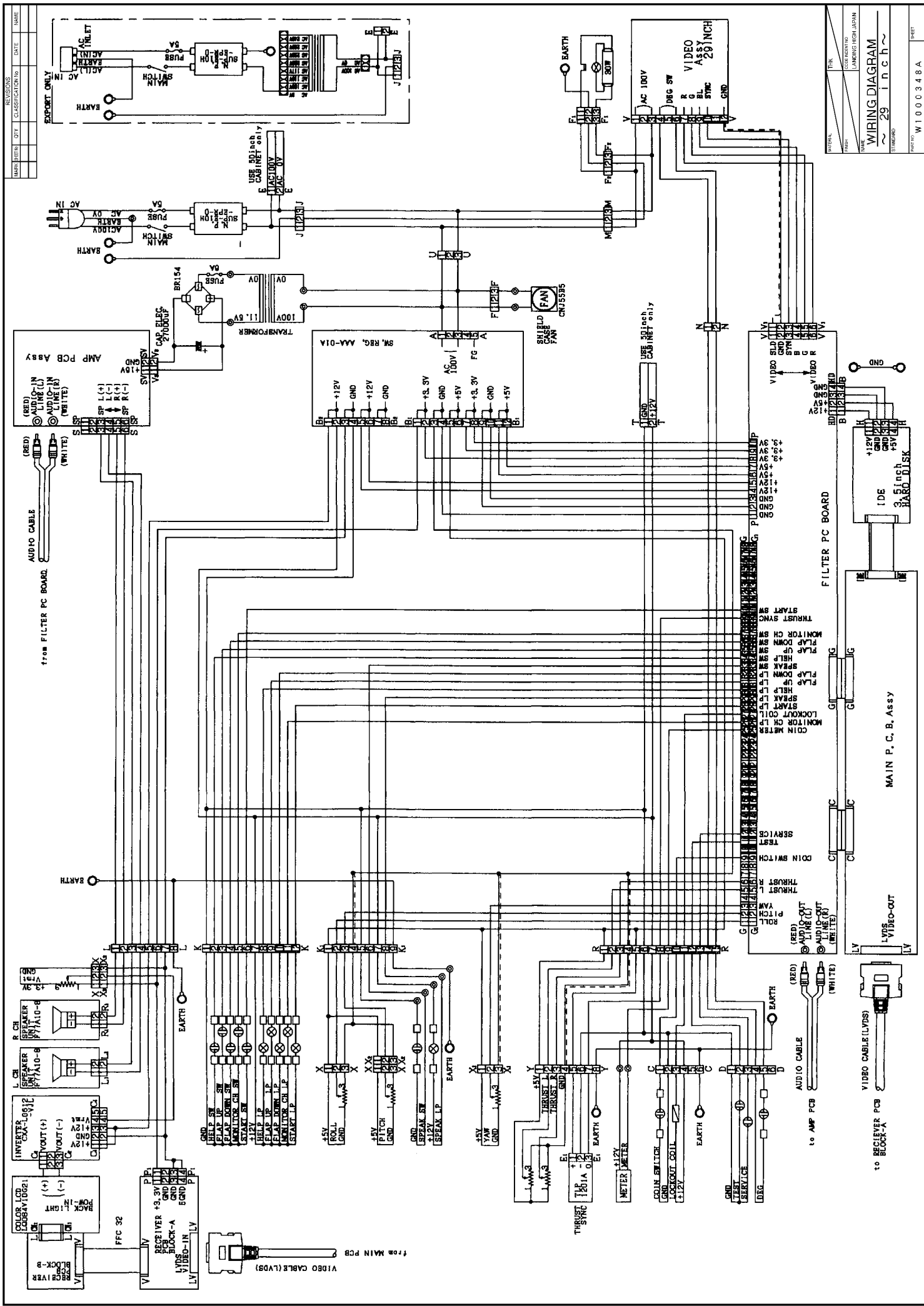


ITEM	PARTS No.	DESCRIPTION	
1	M90 04830A	VIDEO CABINET ASSY	
2	D30 00411A	VIDEO CABINET WITH PARTS	
3	E30 01572A	ROPE HANGER	
4	M08 00220A	VIDEO ASSY 29"	
5	D20 01643A	VIDEO BOARD 29"	
6	E30 13313A	VIDEO BRACKET-L 29"	
7	E30 13314A	VIDEO BRACKET-R 29"	
8	M11 00019A	VIDEO ASSY-(29")	MS9-29T
9	C11 01315A	FERRITE CORE	FCD-2530
10	M10 00233A	FL UNIT-(30W)	HLK-305GL-T
11	C15 00058A	FL LAMP	FL30SEX-KD
12	C14 00101A	GLOW LAMP	FG-1P
13	E30 15065A	RETAINER-B	
14	F90 04941A	TOP PANEL	
15	E30 14812A	TOP COVER	
16	G95 01095A	SMOKE PANEL	
17	E30 14790A	MASK BRACKET	
18	F90 04457A	VIDEO MASK 29"	
19	E30 15064A	RETAINER-A	
20	E30 14804A	SIDE COVER BRACKET	
21	F90 04937A	SIDE COVER	
22	G45 00173A	TITLE PANEL	
23	E30 14810A	TITLE SUPPORT-L	
24	E30 14811A	TITLE SUPPORT-R	
25	G15 01752A	DISPLAY STICKER	
26	G15 01759A	SPEAKER STICKER	
27	G15 01760A	SPEAKER STICKER SHEET	
	L90 04289A	VIDEO CABINET HARNESS	

NOTE

A large, empty rectangular box with rounded corners, occupying most of the page. It is intended for a note or comment.

WIRING DIAGRAMS



REV.	DATE	DESCRIPTION

WIRING DIAGRAM
 ~ 29 inch ~
 STANDARD
 PART NO. W1000348A
 SHEET

TAITO CORPORATION®

©TAITO CORP. 1999 PRINTED IN JAPAN