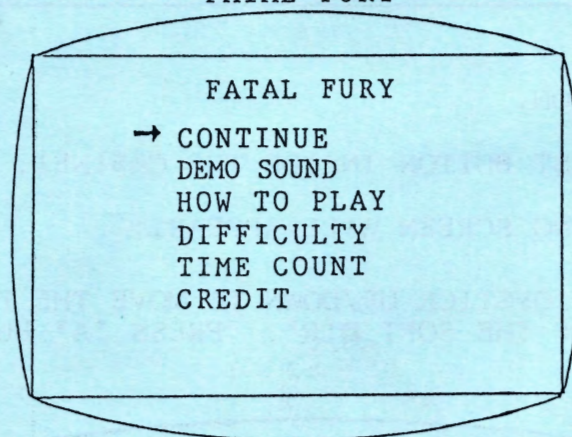


SOFTWARE DIP SWITCH MENU FOR FATAL FURY



1. CONTINUE	Set "Number of Continue Plays"
Controls = Move joystick up and down to set "Continue", change mode with A button, press B button to set.	
Normal setting = With	
2. DEMO SOUND	With or without "Sound" during demo mode
Controls = Move joystick up and down to set "Demo Sound", change mode with A button, press B button to set.	
Normal setting = With	
3. HOW TO PLAY	With or without "How to Play Screen" at the start of each game
Controls = Move joystick up and down to set "How to Play", change mode with A button, press B button to set.	
Normal setting = With	
4. DIFFICULTY	Difficulty setting
Controls = Move joystick up and down to set "Difficulty", change mode with A button, press B button to set.	
Normal setting = Level 4 (Level 1-8, more difficult as number gets higher)	
5. TIME COUNT	Set "Time of Play" during one round
Controls = Move joystick up and down to set "Time Count", change mode with A button, press B button to set.	
Normal setting = Normal	
6. CREDIT	With or without "Credit"
Controls = Move joystick up and down to set "Credit", change mode with A button, press B button to set.	
Normal setting = With	

SETTING UP THE SOFT DIP ON THE MULTI VIDEO SYSTEM

1. TURN POWER ON.
2. PUSH THE TEST BUTTON INSIDE THE CABINET.
3. THE FOLLOWING SCREEN WILL APPEAR.

MOVE LEFT JOYSTICK UP/DOWN TO MOVE THE POINTER TO
"SETTING UP THE SOFT DIP". PRESS "A" BUTTON TO SET.

HARDWARE TEST
SETTING UP THE HARD DIP
SETTING UP THE SOFT DIP
BOOKKEEPING
SETTING UP THE CODE NUMBER
SETTING UP THE CALENDAR
EXIT

THE FOLLOWING SCREEN WILL BE DISPLAYED:

CABINET SET UP
SLOT 1 (GAME TITLE)
SLOT 2 (GAME TITLE)
SLOT 3 (GAME TITLE)
SLOT 4 (GAME TITLE)
SLOT 5 (GAME TITLE)
SLOT 6 (GAME TITLE)

4. SELECT THE GAME TITLE YOU WANT AND PRESS "A" BUTTON TO VIEW THE SOFT DIP SETTING OF EACH INDIVIDUAL GAME.