

CRANE CONTROL BOARD

INTER-CONNECTION TO CONTROL BOARD

12V 1 2 12V
 5V 3 4 5V
 STICK-BUTTON GROUND 5 6 GROUND
 L-R BUT P1-3 IN2-0 7 8 OUT1-7 to U1-5 U1-12 to P1-C, COIN METER

GRAYHOUND CRANE DIP SWITCH SETTINGS

R F-B BUT P1-4 IN2-1 9 10 OUT1-6 to U1-6 U1-11 to P1-D, FUSE METER

DIP SWITCH SETTINGS

FORWARD P1-5 IN2-2 11 12 OUT1-9 to U1-7 U1-12 to P1-E, LOCKOUT 1

1 2 3 4 5 6 7 8

BACK P1-6 IN2-3 13 14 OUT1-8 to U2-1 U2-16 to P1-F, LOCKOUT 2

DIP SWITCH #1 & #2

CLAY P1-7 IN2-4 15 16 OUT1-5 to U2-2 U2-15 to P1-H COUPON METER

ON ON -----2.00 PER PLAY-----
 COUPON OFF ON -----1.00 PER PLAY-----
 ON OFF -----.50 PER PLAY-----
 OFF OFF -----.25 PER PLAY-----

DIP SWITCH #3 & #4

COIN SW P1-10 IN2-7 21 22 U2-12 to P1-L, L-R LIGHT

ON ON 24 -----60 SEC PER PLAY
 OFF ON -----45 SEC PER PLAY
 P1-11 ON 26 -----30 SEC PER PLAY
 OFF OFF -----15 SEC PER PLAY

DIP SWITCH # 5

DN-SV P3-1 IN3-1 29 30 OUT2-5 RELAY 16 P3-8 RIGHT

OFF-BUTTONS CONTROL
 ON- JOYSTICK CONTROL

OP-SV P3-3 IN3-3 31 32

DIP SWITCH #6 & #7

RL-SV P3-8 IN3-4 33 34 P3-6 BACK

PU-SV P3-7 IN3-5 35 36 NOT USED RELAY 13 P3-5 W

DIP SWITCH #8

BT-SV P3-5 IN3-6 37 38 RELAY 12 P3-4 DOWN

OFF-NORMAL PLAY
 ON- SELF TEST

LF-SV P3-4 IN3-7 39 40 P3-3 CLAY

INTER-CONNECTION TO DISPLAY BOARD

5V 1 2 5V
 OUT3-0 3 4 OUT4-7
 OUT3-1 5 6 OUT4-6
 OUT3-2 7 8 OUT4-5
 VINE OUT3-3 9 10 OUT4-4 CREDIT
 DISPLAY OUT3-4 11 12 OUT4-3 DISPLAY
 OUT3-5 13 14 OUT4-2
 OUT3-6 15 16 OUT4-1
 OUT3-7 17 18 OUT4-0
 GROUND 19 20 GROUND

C R A N E C P U B O A R D

INTER-CONNECTION TO CONTROL BOARD

		12V	1	2	12V			
		5V	3	4	5V			
		GROUND	5	6	GROUND			
STICK-BUTTON								
L L-R BUT	P1-3	IN2-0	7	8	OUT1-7 to U1-5	U1-12 to P1-C,	COIN METER	
R F-B BUT	P1-4	IN2-1	9	10	OUT1-6 to U1-6	U1-11 to P1-D,	PLUSH METER	
FORWARD	P1-5	IN2-2	11	12	OUT1-5 to U1-7	U1-12 to P1-E,	LOCKOUT 1	
BACK	P1-6	IN2-3	13	14	OUT1-4 to U2-1	U2-16 to P1-F,	LOCKOUT 2	
CLAW	P1-7	IN2-4	15	16	OUT1-3 to U2-2	U2-15 to P1-H	COUPON MOTOR	
COUPON SW	P1-8	IN2-5	17	18	OUT1-2 to U2-3	U2-14 to P1-J		
(JOY STICK)	P1-9	IN2-6	19	20	OUT1-1 to U2-4	U2-13 to P1-K,	F-B LIGHT	
COIN SW	P1-10	IN2-7	21	22	OUT1-0 to U2-5	U2-12 to P1-L,	L-R LIGHT	
		GROUND	23	24	GROUND			
LEFT	P1-11	IN3-0	25	26	OUT2-7 to U2-3	U2-10 to P1-M		
RIGHT	P1-12	IN3-1	27	28	OUT2-6	RELAY #7 P3-9	LEFT	
FORWARD	DN-SW	P3-K	IN3-2	29	30	OUT2-5	RELAY #6 P3-8	RIGHT
BACK	UP-SW	P3-J	IN3-3	31	32	OUT2-4	RELAY #5 P3-7	FORWARD
STOP	BK-SW	P3-H	IN3-4	33	34	OUT2-3	RELAY #4 P3-6	BACK
	FW-SW	P3-F	IN3-5	35	36	OUT2-2	RELAY #3 P3-5	UP
	RT-SW	P3-E	IN3-6	37	38	OUT2-1	RELAY #2 P3-4	DOWN
	LF-SW	P3-D	IN3-7	39	40	OUT2-0	RELAY #1 P3-3	CLAW

INTER-CONNECTION TO DISPLAY BOARD

		5V	1	2	5V		
		OUT3-0	3	4	OUT4-7		
		OUT3-1	5	6	OUT4-6		
		OUT3-2	7	8	OUT4-5		
	TIME	OUT3-3	9	10	OUT4-4	CREDIT	
	DISPLAY	OUT3-4	11	12	OUT4-3	DISPLAY	
		OUT3-5	13	14	OUT4-2		
		OUT3-6	15	16	OUT4-1		
		OUT3-7	17	18	OUT4-0		
		GROUND	19	20	GROUND		

C R A N E R E L A Y B O A R D

POWER IN CONNECTOR J1

?	1	AC HOT
?	2	AC COMMON
	3	KEY-NC
ORANGE	4	+12 VOLT
RED	5	+5 VOLT
	6	NC
	7	NC
BLACK	8	GROUND
BLACK	9	GROUND

CRANE CPU
 SEPT 2, 1985
 PCV-A

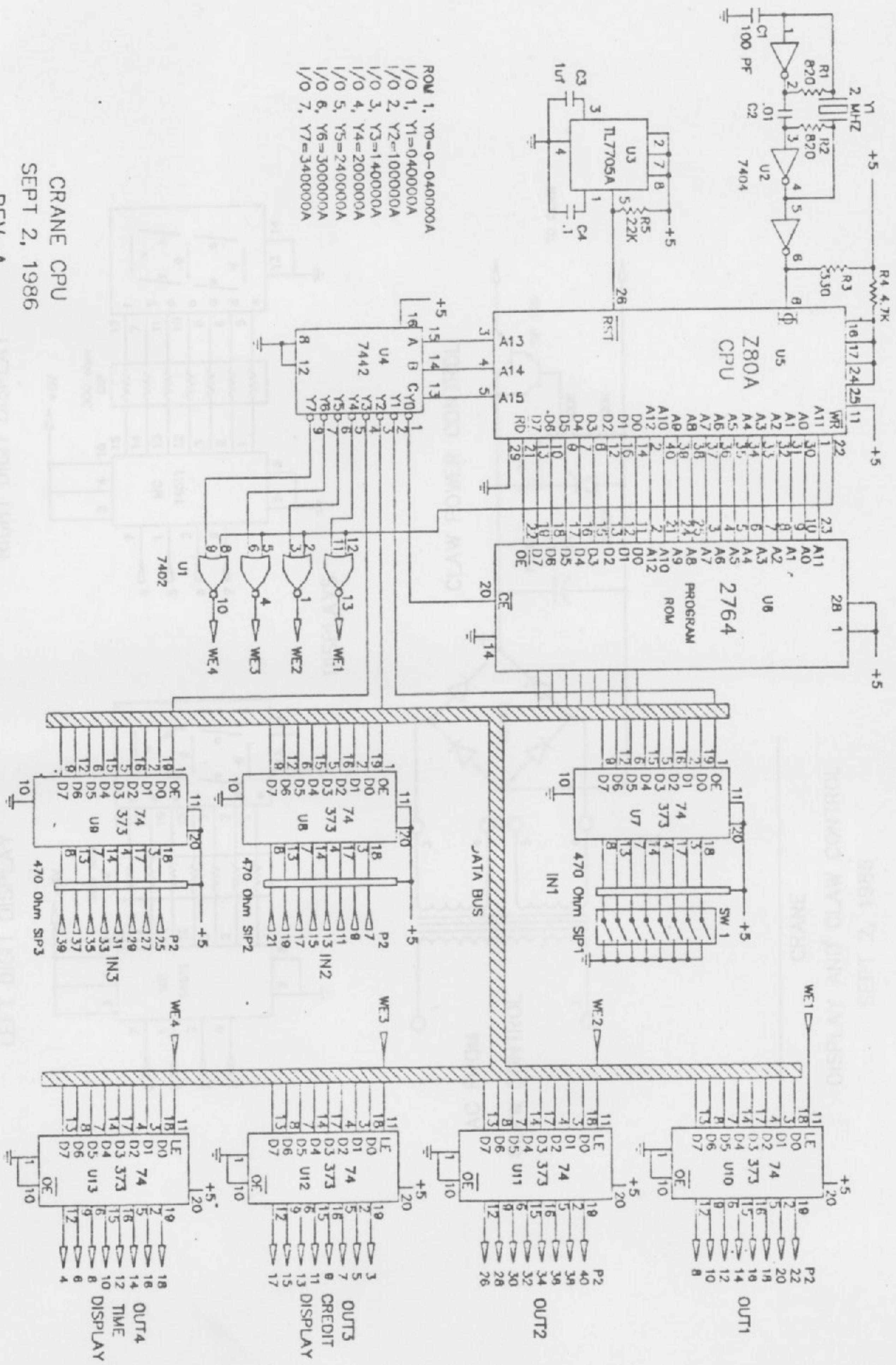
LEFT CONNECTOR P1

(JOY STICK)	(BUTTONS)	TOP	BOTTOM
	BLK	GROUND	1 A GROUND BLK
		NC	2 B NC
LEFT	BRN L-R But	IN2-0	3 C OUT1-7 Coin Meter WH/ORG
RIGHT	RED F-B But	IN2-1	4 D OUT1-6 Plush Meter
FORWARD		IN2-2	5 E OUT1-5 Coin Lock out
BACK		IN2-3	6 F OUT1-4 Coin Lock out
DROP		IN2-4	7 H OUT1-3 Coupon Motor
	Coupon Switch	IN2-5	8 J OUT1-2
	Plush Detector	IN2-6	9 K OUT1-1 F-B Light WH/RED
	BLU Coin SW	IN2-7	10 L OUT1-0 L-R Light WH/BRN
		IN3-0	11 M OUT2-7
		IN3-1	12 N 12 Volt OUT ORG

RIGHT CONNECTOR P3

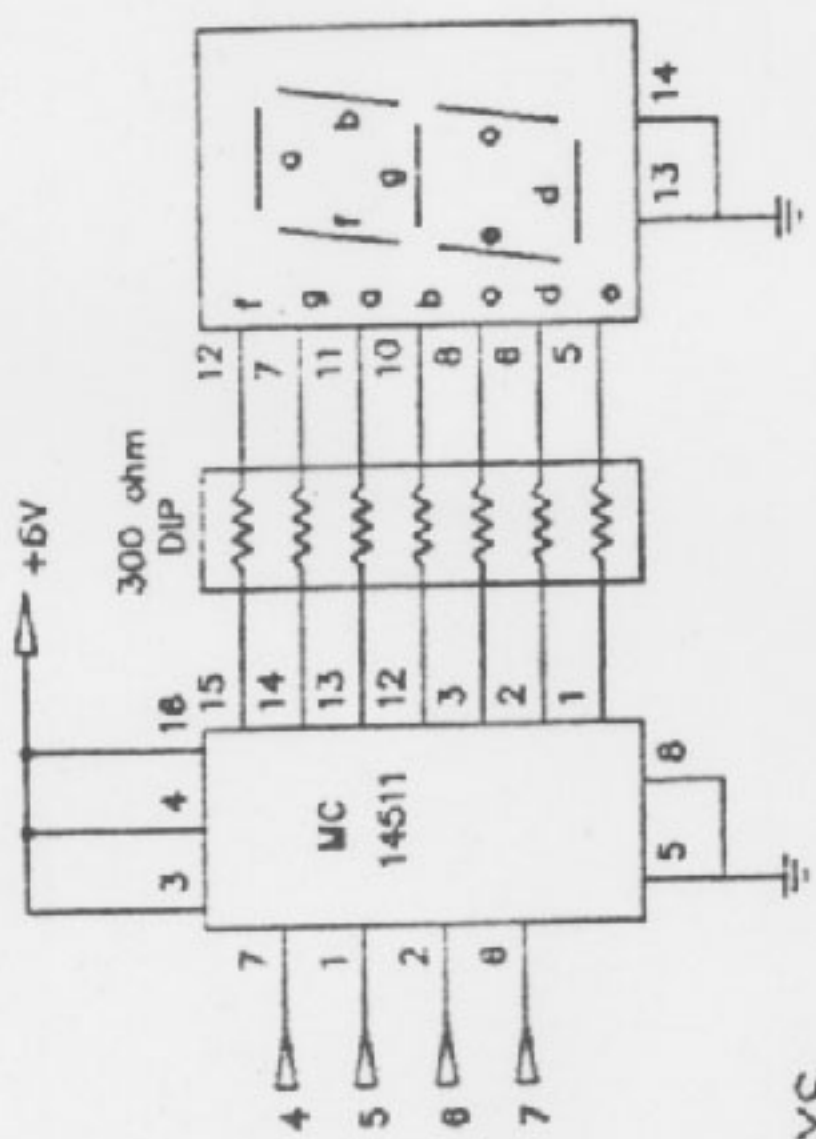
TOP	BOTTOM
BLK Ground	A 1 Ground BLK
GRY AC Com.	B 2 AC Com. GRY ±
BLACK Ground	C 3 RLY#1 CLAW BRN ±
/ WH/VIO LEFT	D 4 RLY#2 DOWN RED ±
LIMIT WH/BLU RIGHT	E 5 RLY#3 UP ORANGE AC TO
SWITCHES WH/GRN FWARD	F 6 RLY#4 BACK YELLOW MOTORS
± WH/YLW BACK	H 7 RLY#5 FWARD GREEN /
± WH/ORG UP	J 8 RLY#6 RIGHT BLUE /
± WH/RED DOWN	K 9 RLY#7 LEFT VIOLET /
	L 10

CRANE CPU
 SEPT 2, 1986
 REV-A

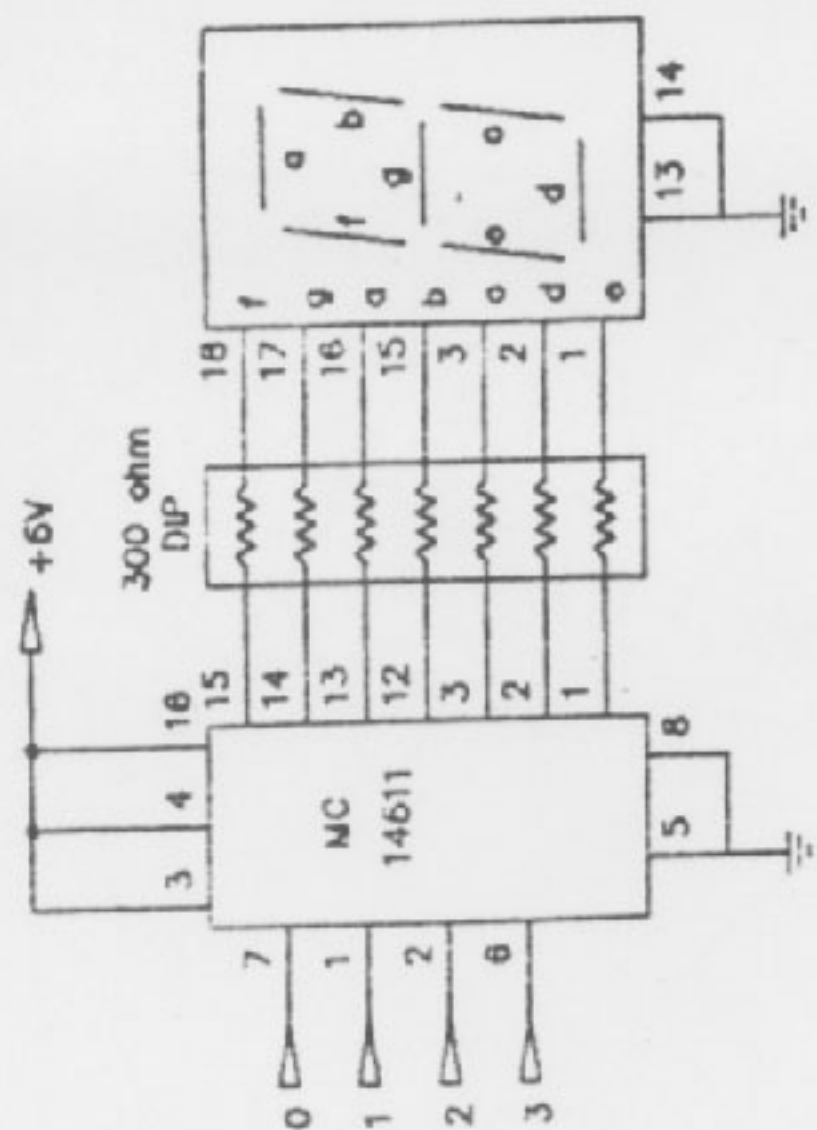


- ROM 1, Y0-0-0400000A
 I/O 1, Y1=0400000A
 I/O 2, Y2=1000000A
 I/O 3, Y3=1400000A
 I/O 4, Y4=2000000A
 I/O 5, Y5=2400000A
 I/O 6, Y6=3000000A
 I/O 7, Y7=3400000A

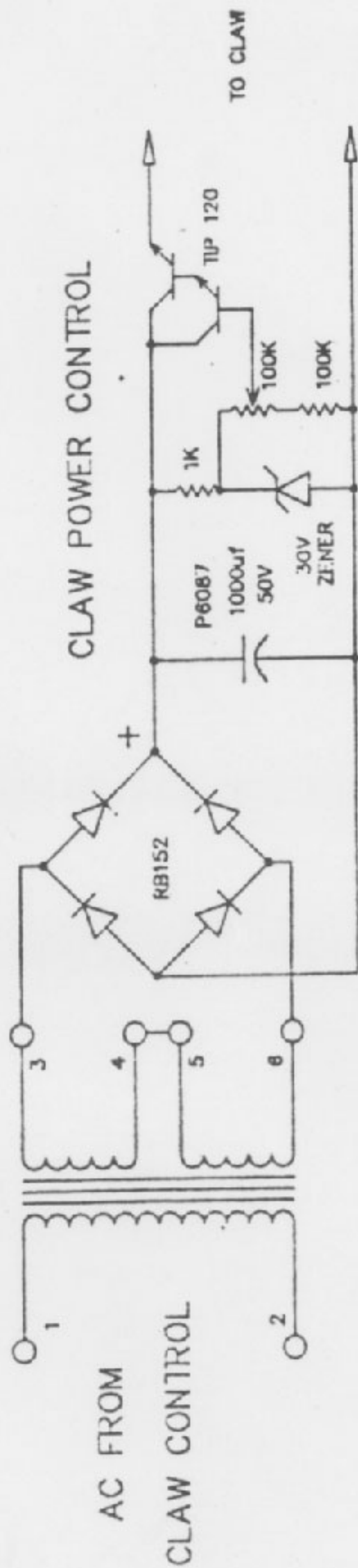
RIGHT DIGIT DISPLAY



LEFT DIGIT DISPLAY



DISPLAYS



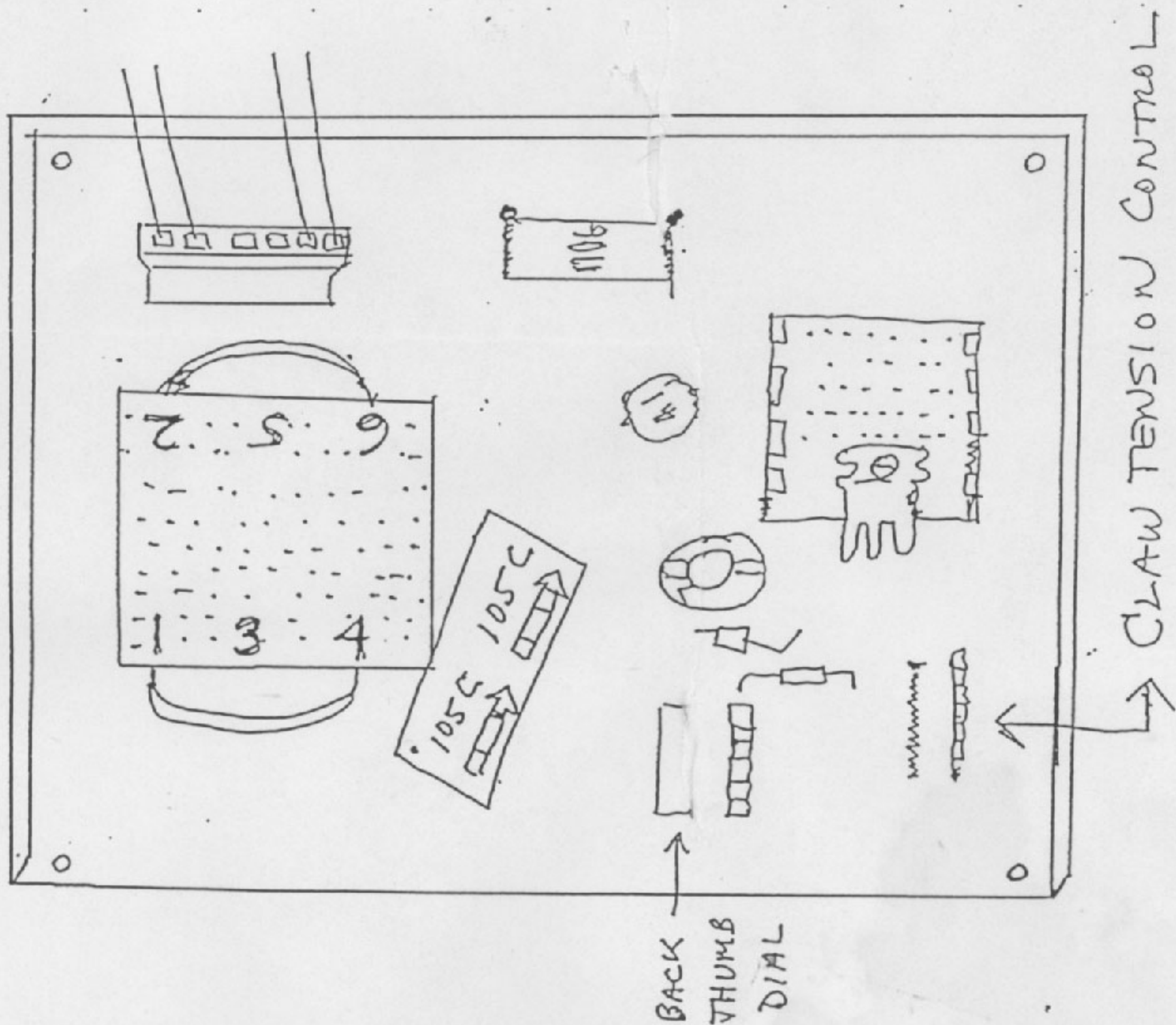
CRANE
 DISPLAY AND CLAW CONTROL
 SEPT 2, 1986

TURN MACHINE ON

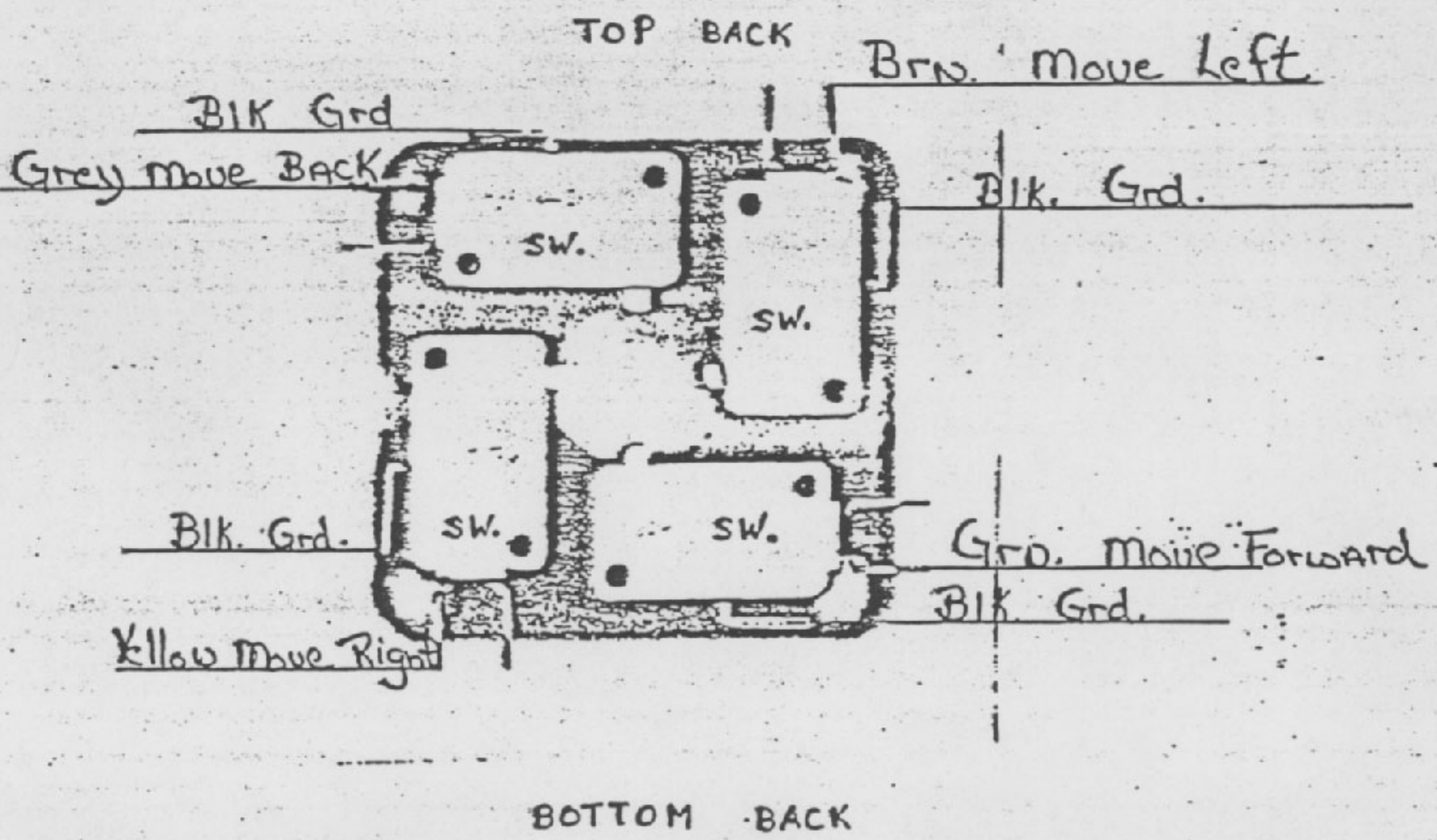
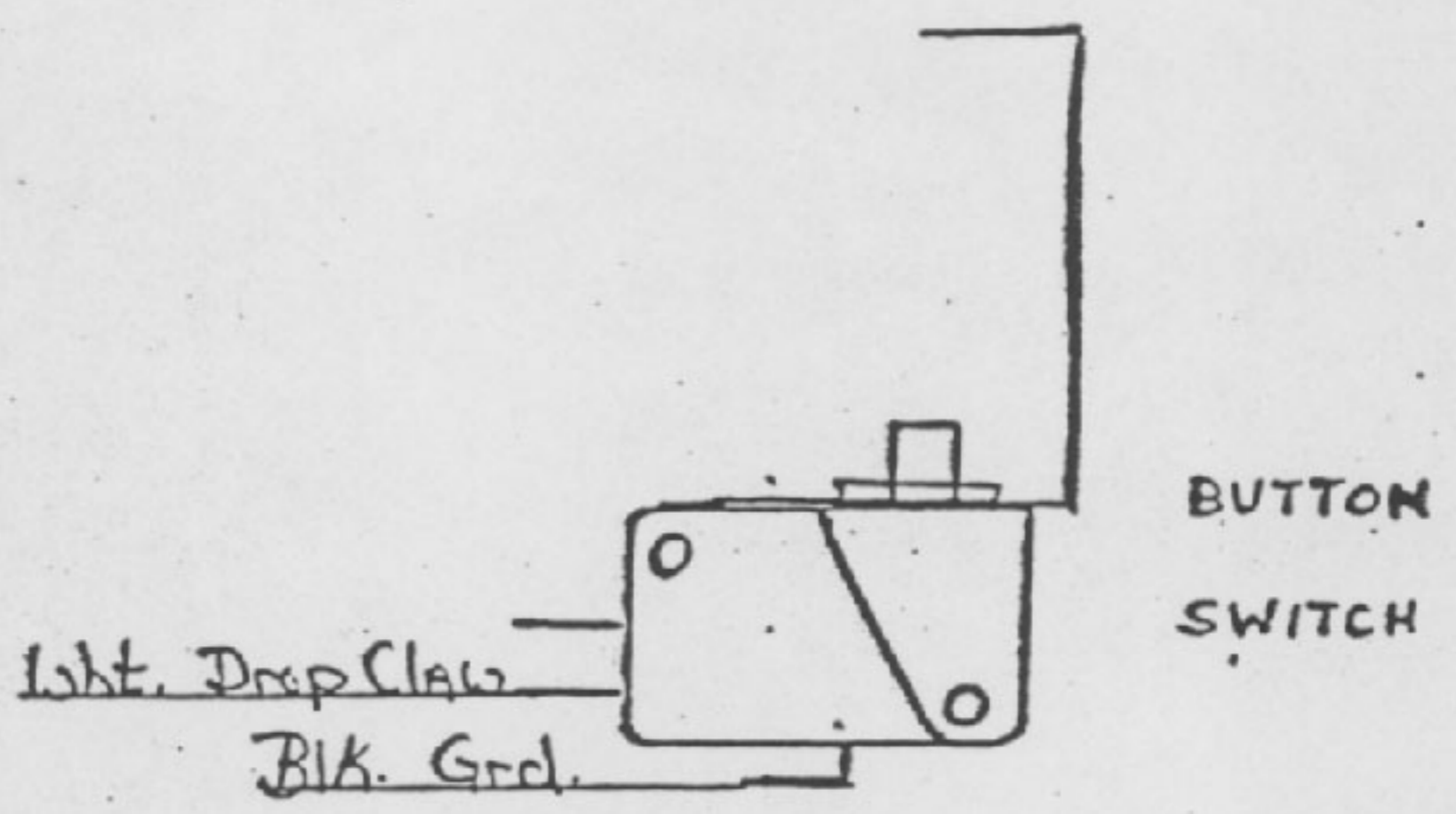
WHILE CRANE IS IN MOTION, GRADUALLY INCREASE REAR THUMB-WHEEL UNTIL CLAW STAYS CLOSED FOR RETURN CYCLE.

NOW YOUR FRONT WHEEL CAN BE USED AS TENSION CONTROL

ANY QUESTIONS CALL, 800-222-0491.

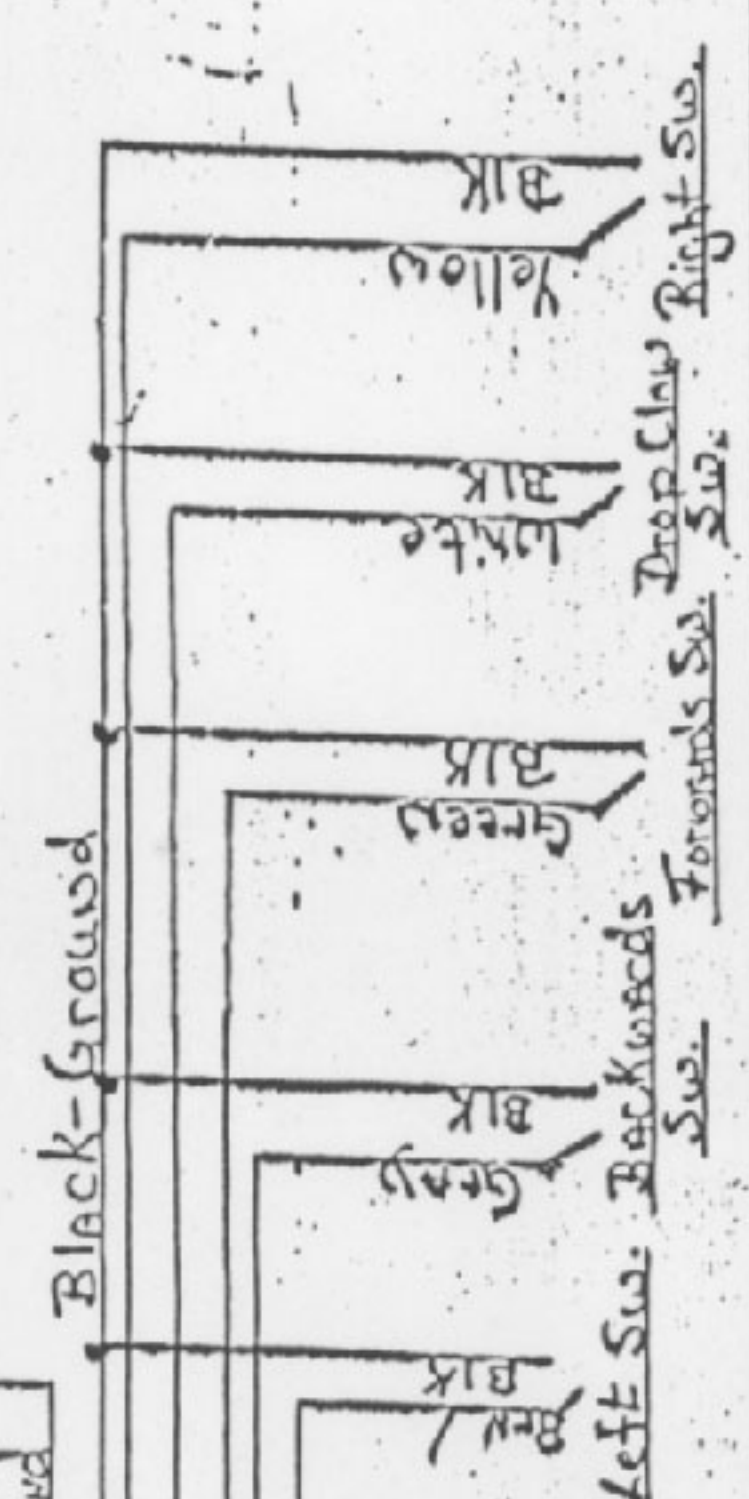
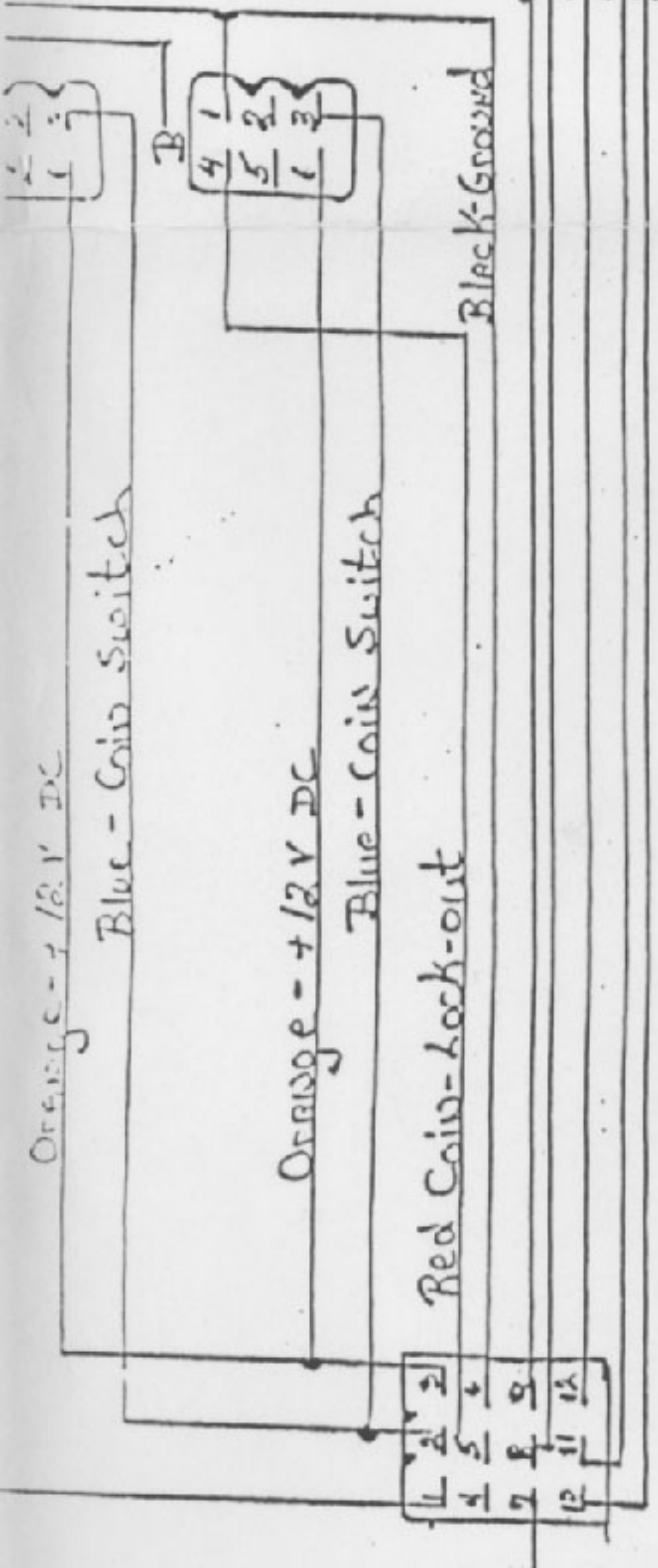


Joystick. Wiring



Joystick

Fingerboard Harness



Joystick

Interface Harness

