

GAME NO. 627  
SEPTEMBER 1978

# **MIDWAY'S ROTATION VIII PARTS CATALOG AND GENERAL INSTRUCTIONS**



**MIDWAY MFG. CO.**

A BALLY COMPANY

10750 WEST GRAND AVENUE  
FRANKLIN PARK, ILLINOIS 60131  
U.S.A.

PHONE: (312) 451-1360    CABLE ADDRESS: MIDCO    TELE. NO. 72-1504

# TABLE OF CONTENTS

---

|  | Page No. |
|--|----------|
| SETTING UP INSTRUCTIONS                      | 1        |
| GENERAL ADJUSTMENTS & INSTRUCTIONS           | 2—3      |
| SETTING UP INSTRUCTIONS—FIGURES              | 4—12     |
| NO. 627—ROTATION VIII—PICTURE                | 14—15    |
| TOP PLAYFIELD ASSY. (ASSEMBLED)              | 16—17    |
| TOP PLAYFIELD ASSY. (PARTIALLY DISASSEMBLED) | 18—19    |
| BOTTOM PLAYFIELD ASSEMBLY                    | 20—21    |
| ROTOR ASSEMBLY                               | 22—23    |
| ROTOR ASSEMBLY                               | 24—25    |
| FALSE BOTTOM ASSEMBLY                        | 26—27    |
| MOTOR & DRIVE SYSTEM                         | 28—29    |
| THUMPER BUMPER & COIL ASSEMBLIES             | 30—31    |
| SLING SHOT KICKER COIL ASSEMBLY              | 32—33    |
| KICK OUT ASSEMBLY                            | 34—35    |
| FLIPPER UNIT ASSEMBLY                        | 36—37    |
| ELECTRIC SHOOTER ASSEMBLY                    | 38—39    |
| BALL SHOOTER ASSEMBLY                        | 40—41    |
| SPINNER GATE & SWING GATE ASSEMBLIES         | 42—43    |
| FLIPPER BUTTON & FLIPPER ASSEMBLIES          | 44—45    |
| BALL GATE & BALL TILT ASSEMBLIES             | 46—47    |
| EQUIPMENT CHART                              | 48       |

**WARNING**

**THIS GAME MUST BE GROUNDED. FAILURE TO DO SO MAY RESULT IN DESTRUCTION TO ELECTRONIC COMPONENTS.**

(

)

(

## SETTING UP ROTATION VIII (Mechanical)

### STEP 1.

#### MOUNT LEGS (see figure A)

After unpacking, tilt cabinet to a side without a shooter onto a rug or soft surface. Remove packing blocks and install legs into the leg mounts in the corners of the cabinet along with the 2 inch washers sandwiched between the legs and the cabinet bottom. Unravel line cord but do not plug in. Note the location of the on-off switch. When the cabinet is upright, the on-off switch is located under the flipper between the "WEST" and "SOUTH" players. Tilt the game onto it's legs and check to see if it is sturdy.

### STEP 2.

#### REMOVE GLASS TOP

Remove the top by unlatching the glass and then pulling the glass straight up. The four latches can be found on the inside of the cabinet, just above the coin doors, and can be seen in (Figure D). When replacing top, reverse above order.

**IMPORTANT:** Shooting stations are indexed to player score readouts on bottom arch. Therefore, always replace glass top assembly with the north position corresponding to the "NORTH POSITION" label stapled on the cabinet top edge.

### STEP 3.

#### LIFT PLAYFIELD

After removing glass top assembly step (No. 2), rotate playfield to an in-between shooting position. That is, the bottom center of playfield is to align with any flipper button located above the ball shooter assembly. (Fig. B). Remove the two light shields that are closest to the bottom arch, and remove the exposed (tie-down) wing nuts (Fig. C). Lift lower edge of playfield about 20°, then pull back, off the front hinge, and let it slide down to the build in stops (about 5") (Fig. D).

Raise the playfield as required, lift the two hinged playfield support brackets, and lower playfield over them, with the support bracket tips protruding into the tie-down post holes (Fig. E).

TO CLOSE GAME, FOLD PLAYFIELD SUPPORT BRACKETS BACK TO THE ORIGINAL POSITION, TIGHTEN THUMB SCREW, AND LOWER PLAYFIELD TO ABOUT 20°, THEN PUSH IT BACK TO ITS ORIGINAL POSITION. THIS WILL REQUIRE A SLIGHT LIFTING OF THE PLAYFIELD FRONT TO GET IT BACK INTO THE HINGE. THEN LOWER THE PLAYFIELD OVER THE TIE-DOWN POSTS, REPLACE WING NUTS, AND LIGHT SHIELDS.

### STEP 4.

#### REMOVE THREE (3) SHIPPING BRACKETS-ALL 3 BRACKETS ARE PAINTED RED

While the playfield is up, remove the two red shipping brackets from the shelf. Next, remove the third shipping bracket located behind one of the coin doors marked with a red dayglo label on the door. All brackets can be removed with a 1/4 inch nut driver. Keep all three shipping brackets in case the game has to be shipped for repairs.

### STEP 5.

#### INTRODUCE THE STEEL PLAYBALL

Lower playfield into playing position, (see Step 3). Rotate the table one turn (360°) to make sure that the table is free to turn. If not, the hinge brackets are not properly seated on the shaft (see figure J). Place the ball between the bottom flippers and let it roll down hill under the credit/ball display into the "outhole". Replace the glass top, (see Step 2).

### STEP 6.

#### LEVEL THE CABINET

Bring game to its playing location. Place a level from NORTH to SOUTH, then WEST to EAST to check game. At the bottom of each leg is an adjusting guide, when game is level, tighten lock nut with a 9/16" open end wrench.

**IMPORTANT:** If game is not level, each player will have a different "Action" to his play.

### STEP 7.

#### TO ATTACH HIGH BASE (figure H)

Place cabinet on a padded surface and turn on a side without a shooter. Remove skid blocks and proceed as in (Figure H).

## GENERAL ADJUSTMENTS AND INSTRUCTIONS

### TO REMOVE COMPLETE GAME FROM CABINET (see figure F)

- A. Disconnect line cord
- B. Lift playfield (see step 3 of setting up instructions).
- C. Remove four bolts and washers from false bottom.
- D. Unplug one connector by cash box.
- E. Close playfield (see step 3 of setting up instructions).
- F. Lift out complete game from cabinet, line cord will come out with unit.

### TO INSERT COMPLETE GAME BACK INTO CABINET

- G. Insert line cord through large hole in bottom of cabinet and pull as you lower unit into cabinet. Make certain the two holes in false bottom fit on the 2 locating studs located in bottom of cabinet, this positions the unit in center of cabinet. The two studs are not mounted symmetrically, and the game will fit back into the cabinet only one way. Also note location of the connector unplugged in step D. If game has not seated properly, check if the line cord is pulled all the way out, if there are any loose parts in bottom of cabinet, or if the locating studs are in proper alignment with holes. When properly seated, the game will not rock or shift.
- H. Lift playfield (see step 3).
- I. Insert four bolts with washers through false bottom and tighten securely.
- J. Close playfield (see step 3).

### TO REMOVE ROTOR FROM FALSE BOTTOM (figure G)

- K. Remove complete game from cabinet (see above) and place it on a table.
- L. Remove encoder assembly by loosening two set screws on main shaft and remove two wood screws holding bracket and encoder assembly. Then remove entire assembly. WHEN REPLACING, CHECK ENCODER FOR PROPER SETTING AND TIGHTEN THE TWO SET SCREWS TO A MAXIMUM OF 16in. lbs.
- M. Loosen the four screws holding motor bracket assembly. Slide the assembly forward and remove "V" belt.
- N. Loosen the two set screws holding the pulley and remove pulley. WHEN REPLACING, THE TWO DRIVE PULLEY SET SCREWS MUST BE INDEXED ON FLATS OF MAIN SHAFT AND TIGHTENED TO A MAXIMUM OF 140in. lbs. (TO CHECK IF TIGHT, HOLD PULLEY AND MOVE IN BOTH DIRECTIONS).
- O. Loosen the two set screws on collar and remove collar. WHEN REPLACING, MAKE CERTAIN THE TWO COLLAR SET SCREWS ARE TIGHT (140in. lbs. max.) AND ARE INDEXED ON FLATS OF MAIN SHAFT.
- P. Lift off playfield and rotor assembly.
- Q. To assemble rotor reverse procedure.

### MOTOR PULLEY BELT

Position motor assembly in center of screw slots. Belt tension should be springy.

### OPTICAL SENSOR

The gap between the optical sensor and the reflective tape bracket has been set at the factory, when replacing one or the other, maintain the same alignment and gap. The optical sensor must also be mounted square on the optical P.C. board.

### FLIPPER ALIGNMENT

The playfield is dimpled at the end of the two lower flippers. The center line of the flipper should run through the dimple for proper alignment. When flipper has to be rotated, make sure that the set screws holding the flipper shaft are torqued to a min. of 70 in. lbs.

### SWING GATE

The swing gate, located by the spinner, is controlled with a torque spring. To adjust tension, rotate the upper end of the torque spring one turn in either direction, as required.

## **LIGHT SHIELDS**

Light shields should be mounted loose to allow for heat expansion. Do not fully tighten mounting screws or chrome acorn nuts.

## **WIRE FORMS**

Wire forms should be checked periodically for the required dimension from under the wire to top of the playfield. The dimension should be maintained at 1/2 inch. The two wire forms by the lower flippers should be 1/4 inch from the top of the playfield.

## **SWITCHES**

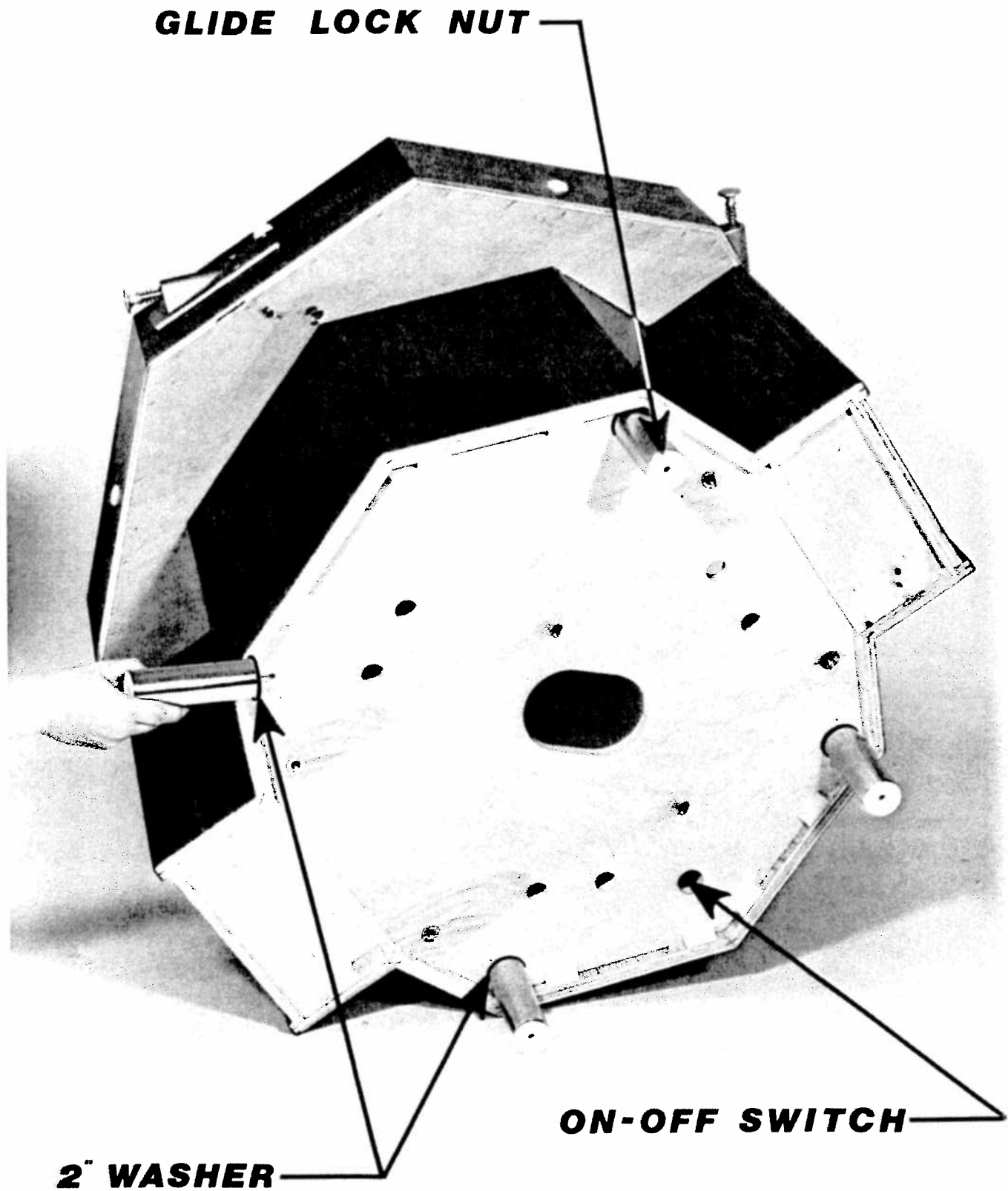
All switch assemblies consist of leaf springs, contacts, separators, plastic tubing and screws to hold them to the mounting surface. Before attempting to adjust a switch assembly, make sure that these screws are tight. If not, tighten screw closest to the contact end of the leaf spring first. This will prevent the assembly from being secured in such a manner that the leaf springs tend to fan out. In general, all leaf springs are adjusted for a 1/16" gap in the open position and 0.10" overtravel or wipe in the closed position. All contacts should be in good condition. Unless otherwise instructed, they should be dry or non-lubricated. All contacts should be free of dust and dirt. Contacts, with the exception of the flipper button switch assemblies, are plated to resist corrosion. Filing or burnishing breaks the finish and encourages corrosion. Clean by closing the contacts over a clean piece of paper (e.g. a business card) and wiping gently until the contacts are clean. For the flipper button switch assemblies ONLY: Tarnish can be removed with a contact file followed by a burnishing tool. Severely pitted contacts must be replaced as an assembly. In general, contacts need be cleaned or replaced and adjusted only when they are found to be a source of game mal-function.

## **CLEANING PLAYFIELD**

The Midway playfield has an improved tuff-coat finish with excellent wearing properties. Its life expectancy, as well as play appeal, can be extended by periodic cleaning of the playfield.

Midway recommends you clean your playfield with Wildcat #125 (Wildcat Chemical Co., 1333 W. Seminary Drive, Ft. Worth, Texas 76115). Wildcat #125 is a combination cleaner and polish. Midway has tried and tested this product and found it to be very effective. If Wildcat #125 is not available, Midway suggests you ask your Distributor to order it. Inspect and hand polish the ball in a clean cloth. A chipped ball must be replaced. It can ruin the finish on the playfield in a short period of time.

**DON'T:** Use water in large quantities, highly caustic cleaners, abrasive cleaners or cleaning pads on the playfield. Do not allow a wax or polish build up. Waxes yellow with age and spoil play appeal.



**FIGURE A**

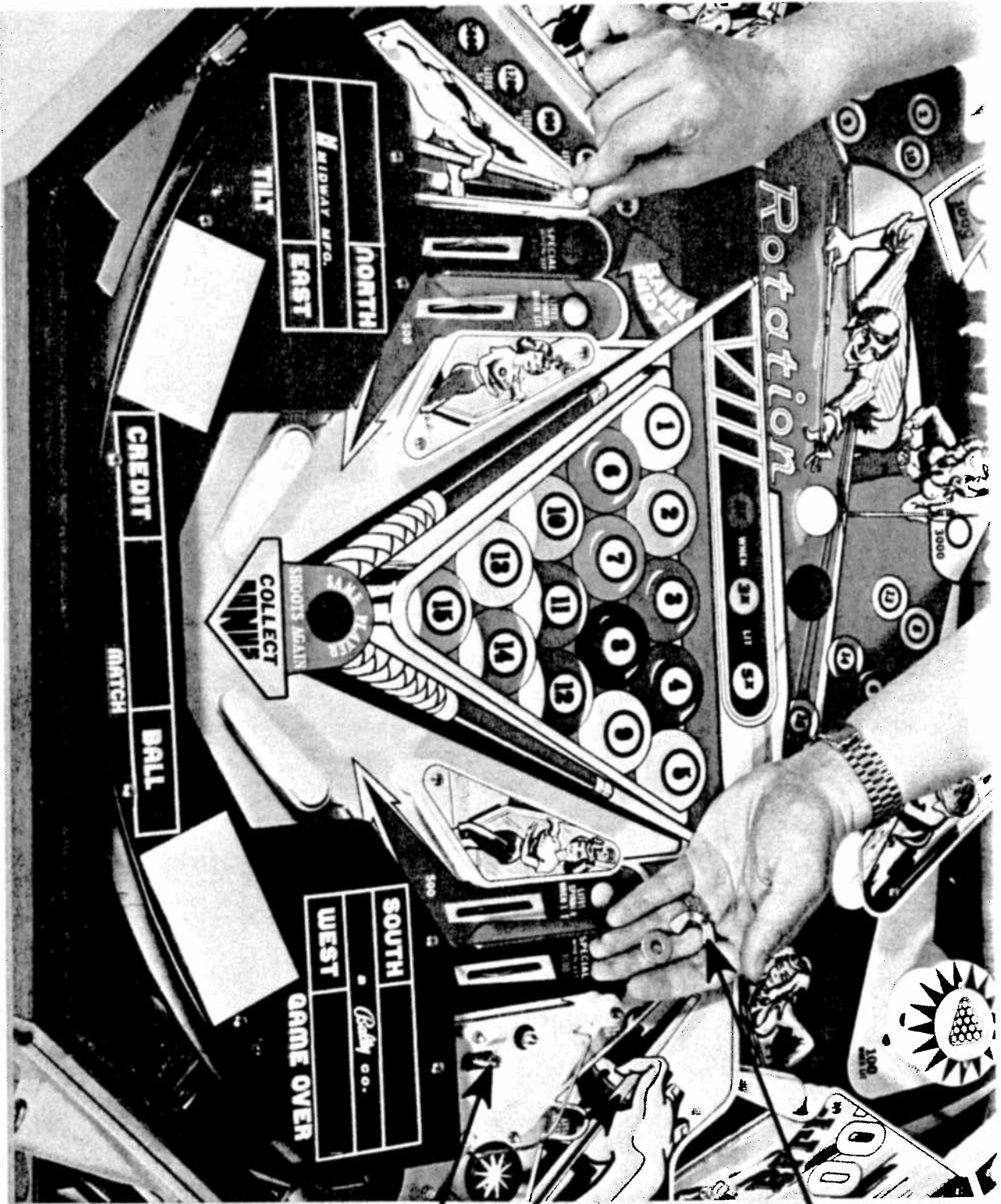


FLIPPER BUTTON

BALL SHOOTER ASSY.

# FIGURE B

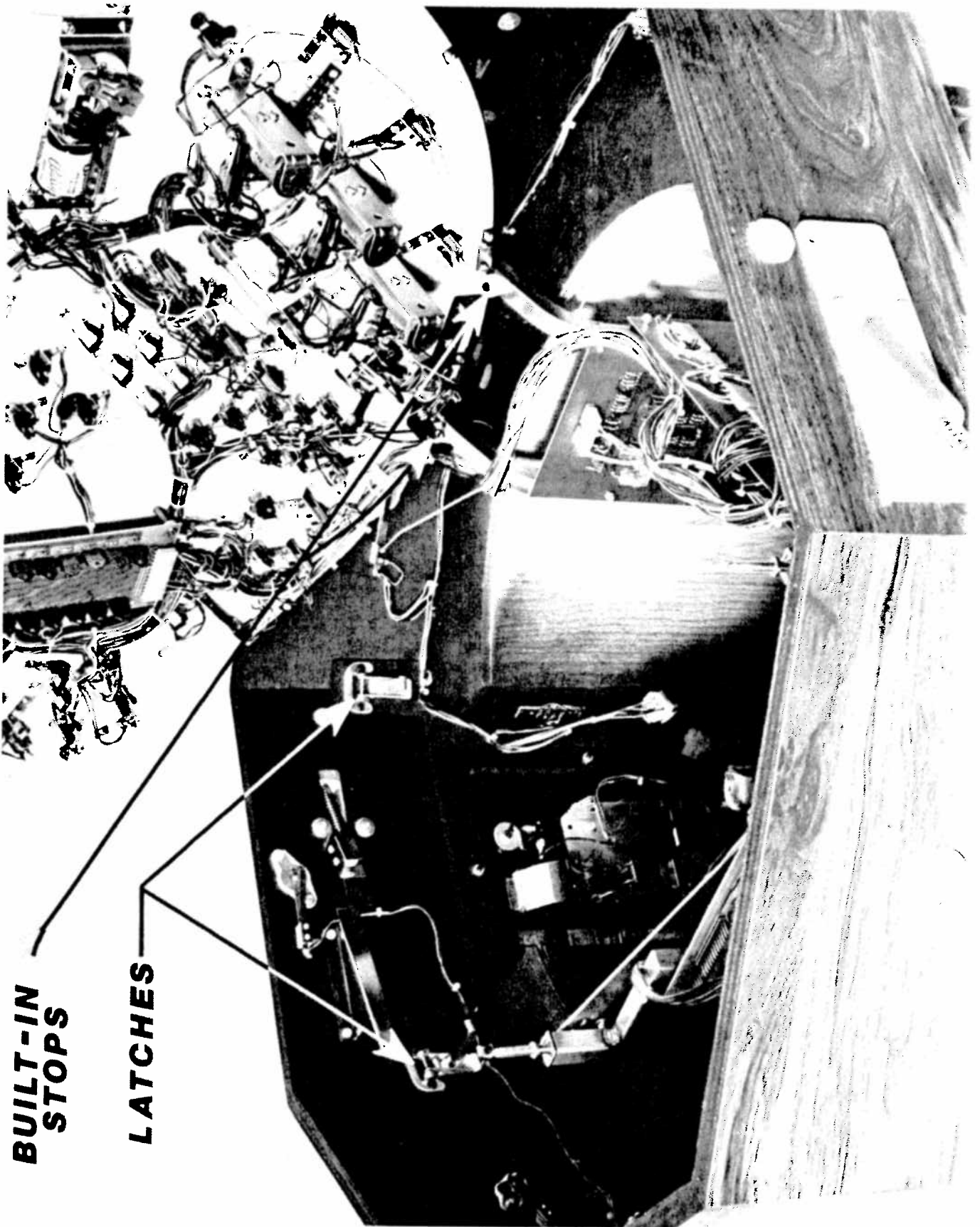




**WING NUT**

**REMOVED  
LIGHT SHIELD  
TIE-DOWN  
POST**

**FIGURE C**



**BUILT-IN  
STOPS**

**LATCHES**

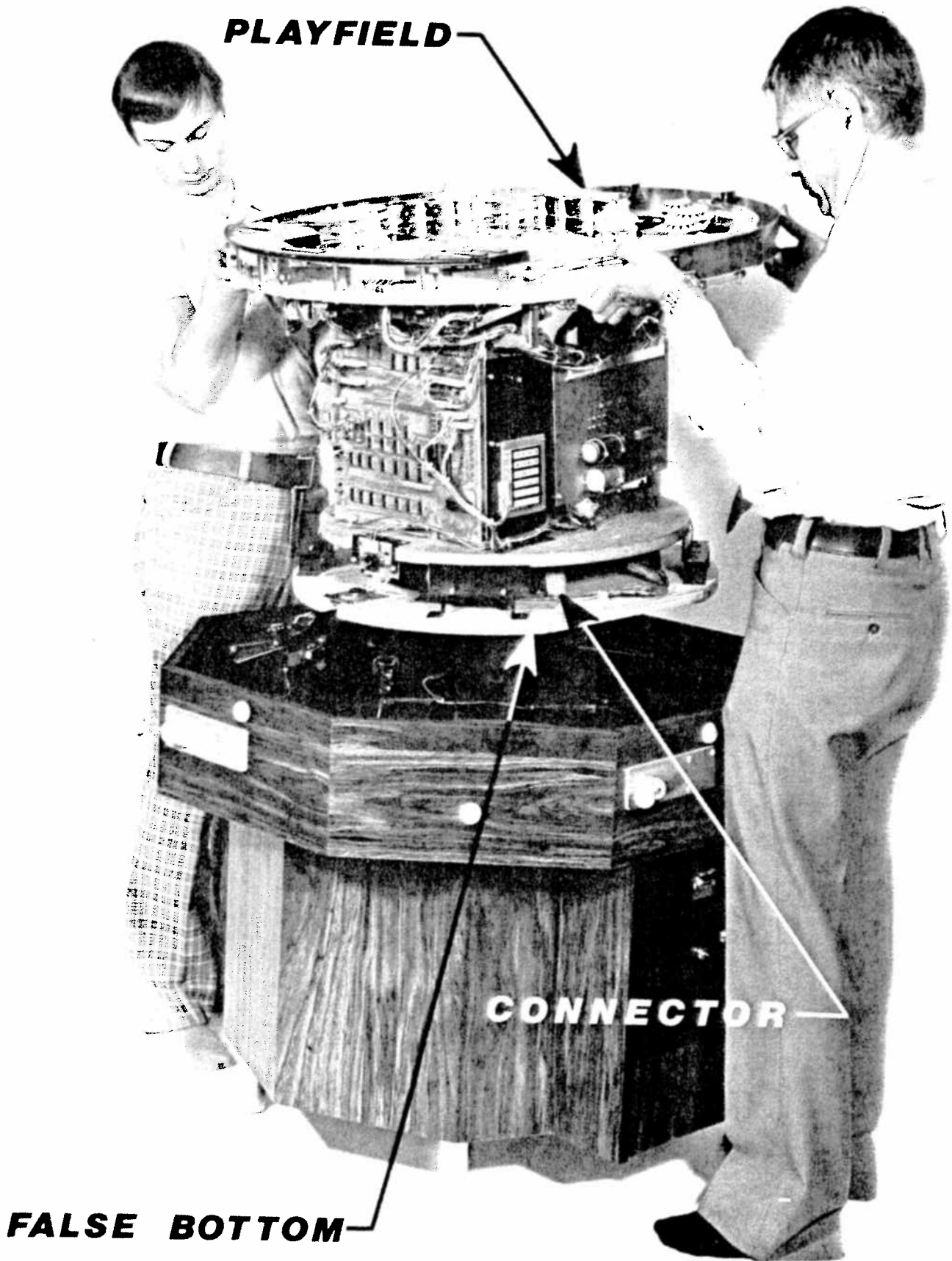
**FIGURE D**

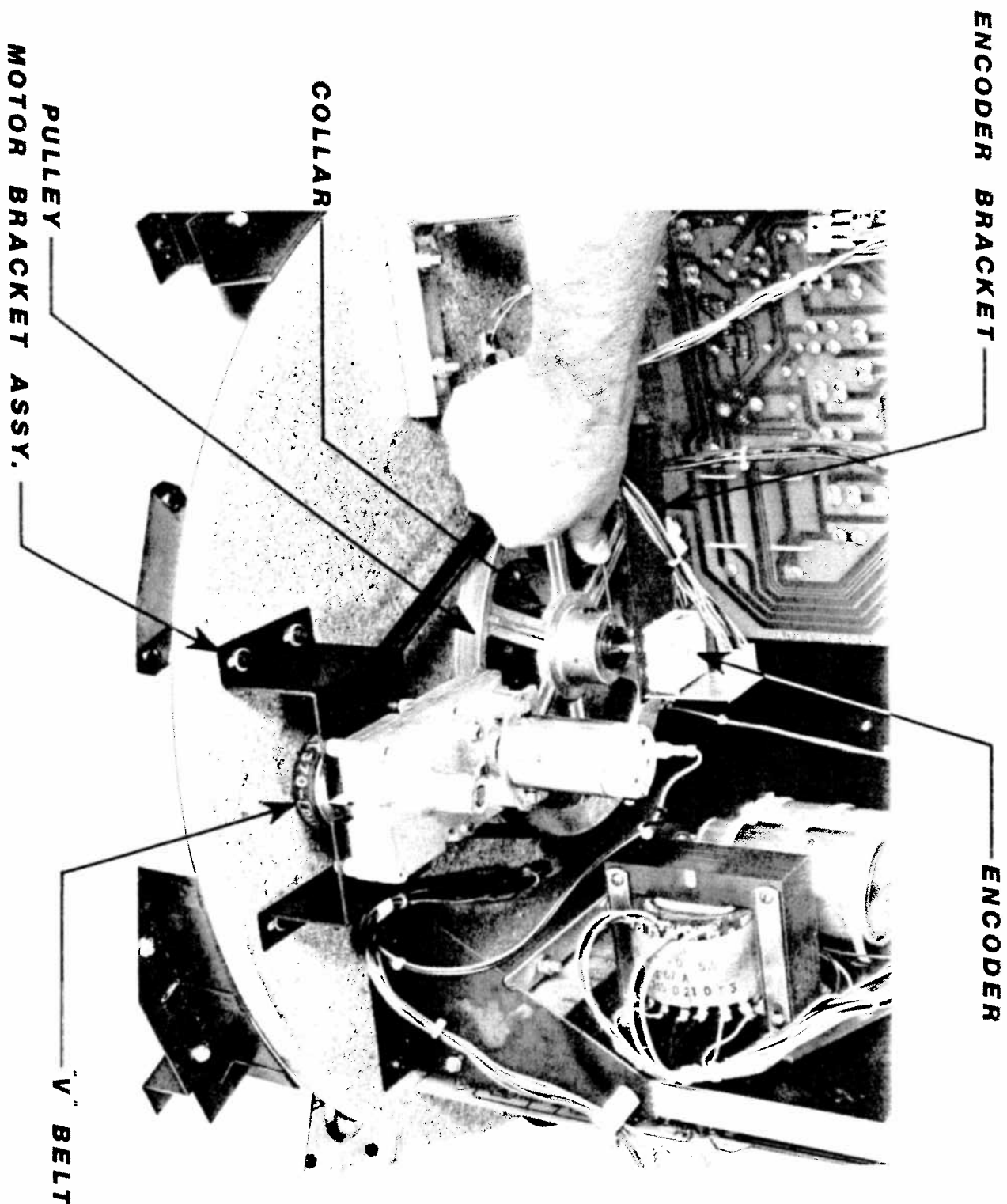
**SUPPORT BRACKETS**



**FIGURE E**

# FIGURE F





**FIGURE G**



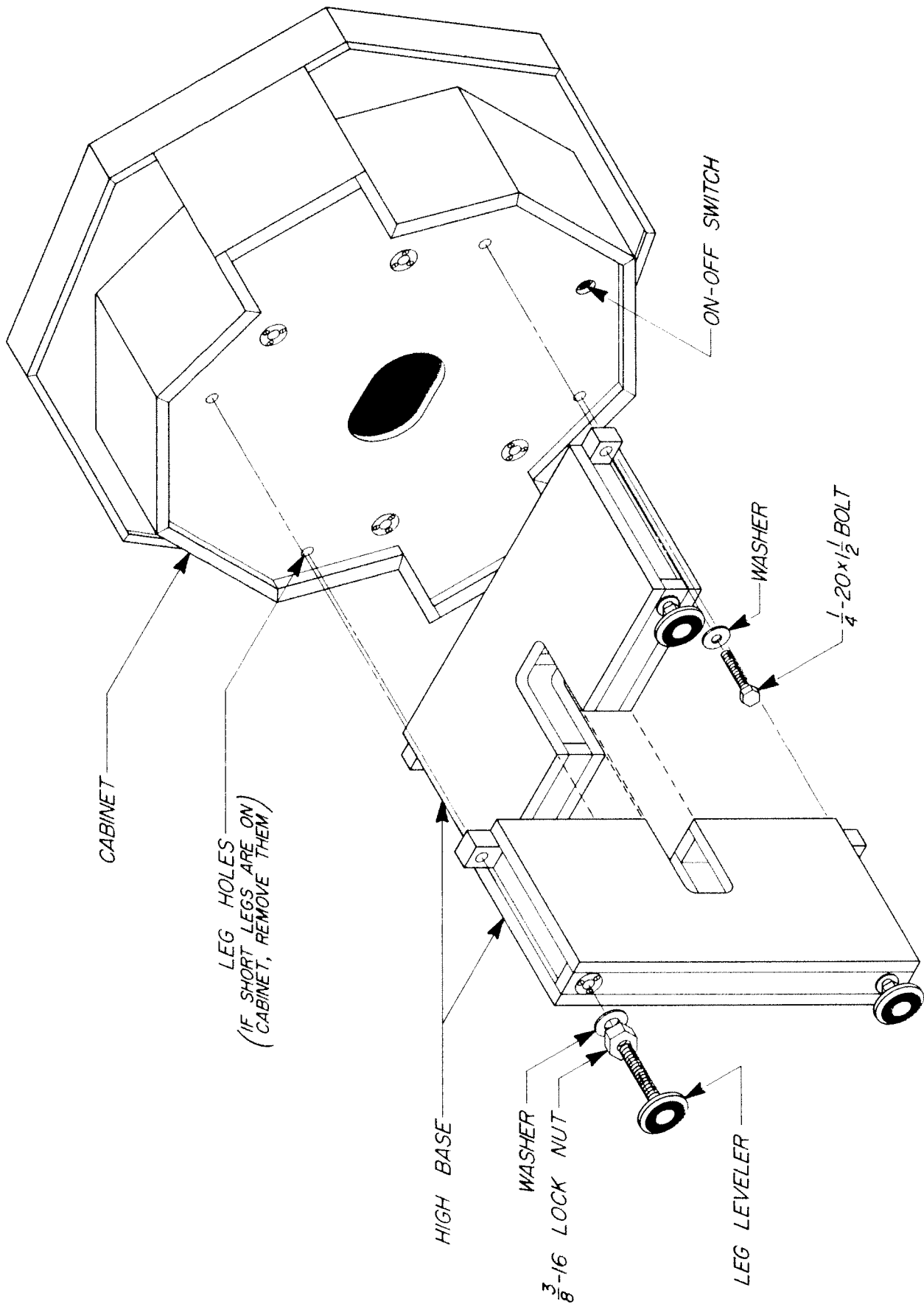
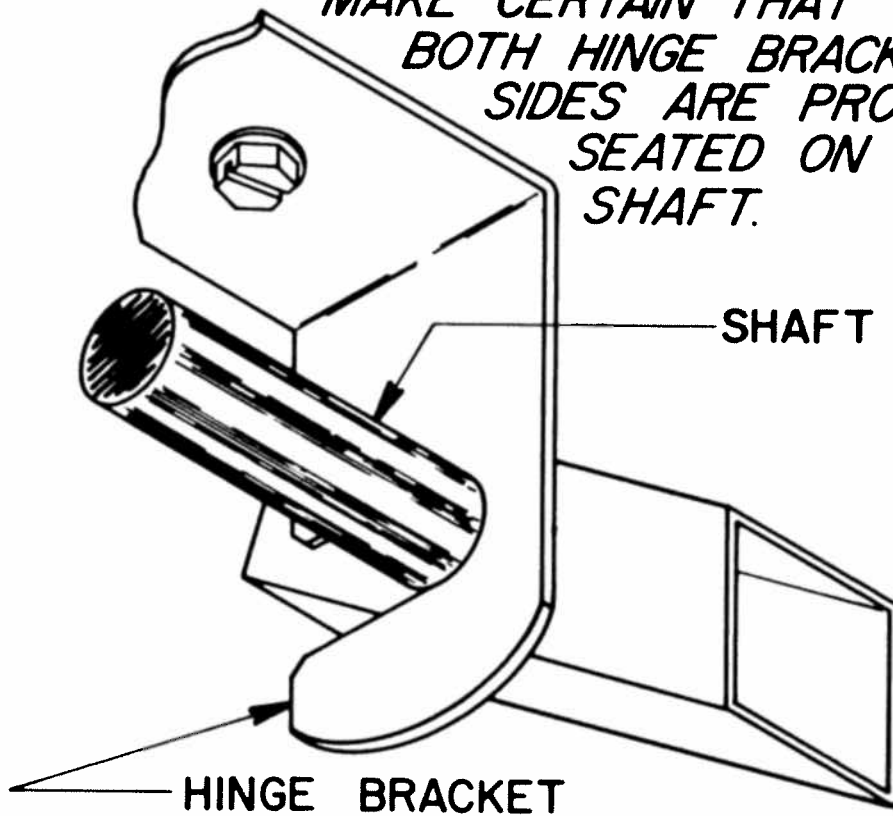


FIGURE H

**CAUTION**

**WHEN REPLACING PLAYFIELD  
MAKE CERTAIN THAT  
BOTH HINGE BRACKET  
SIDES ARE PROPERLY  
SEATED ON THE  
SHAFT.**



**FIGURE J**

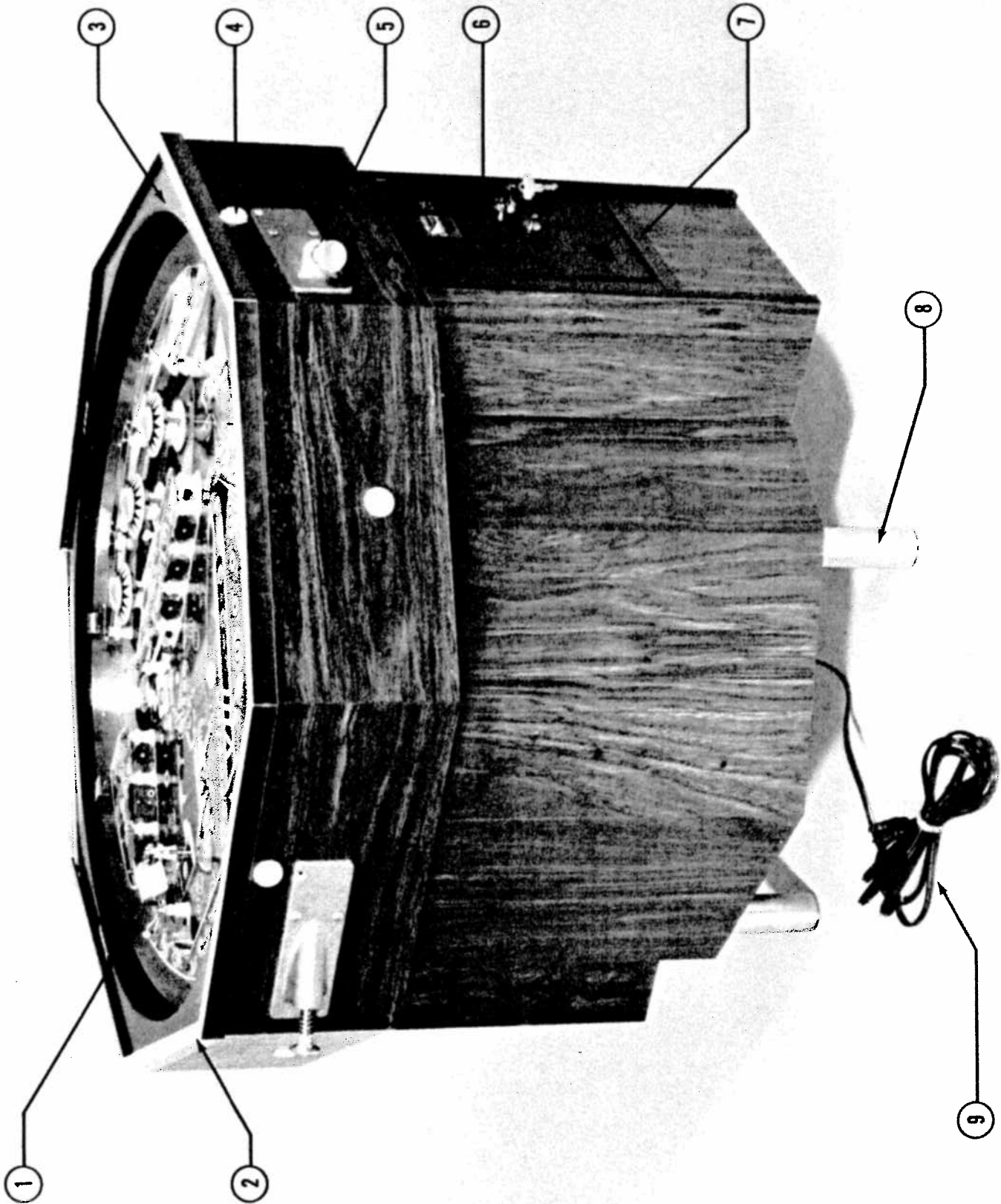
# NOTES

---

This space is provided for personal notes



NO. 627 - ROTATION VIII - PICTURE

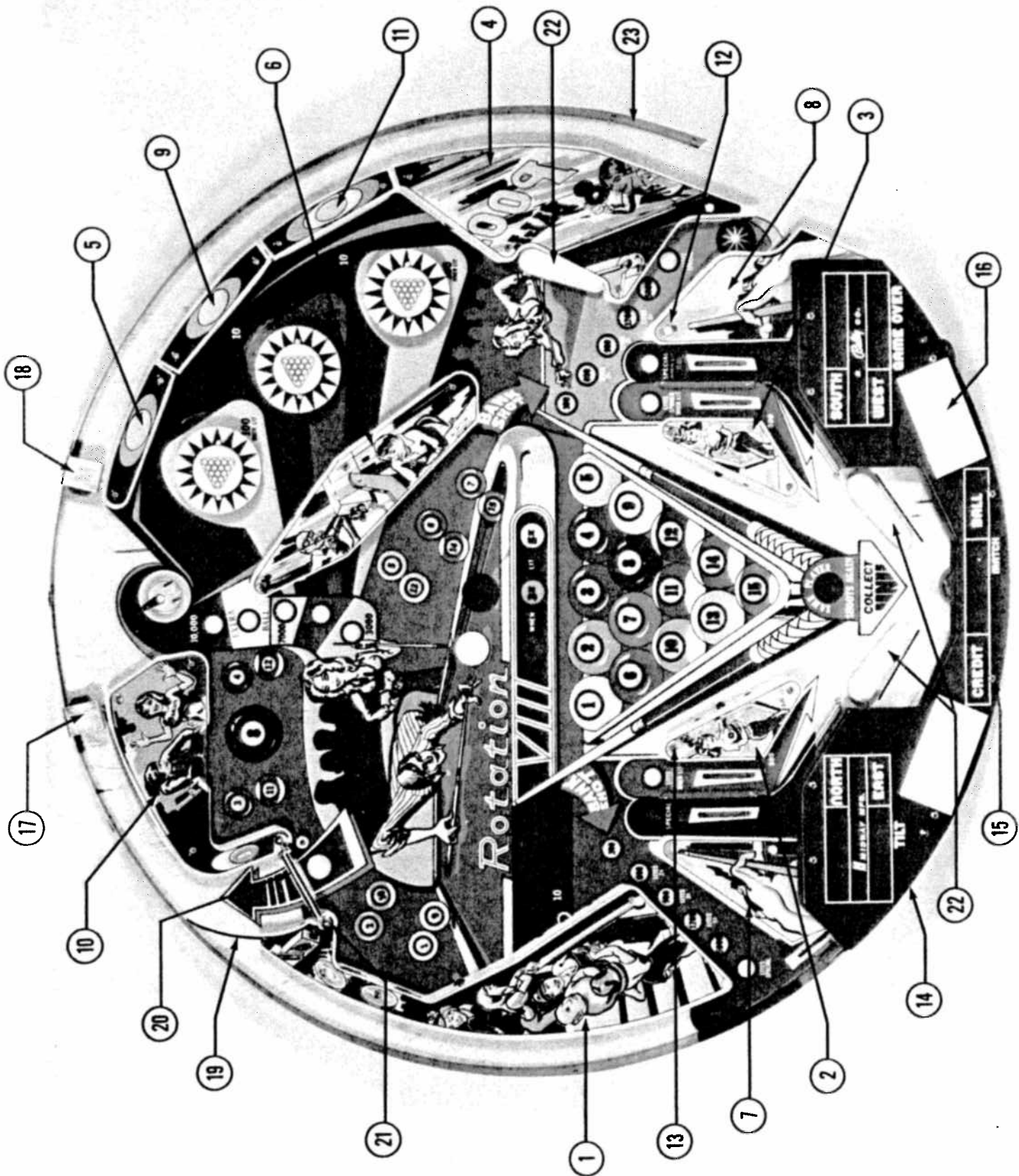


NO. 627 - ROTATION VIII - PICTURE

ORDER BY PART NUMBER ONLY

| ITEM | PART No         | DESCRIPTION   |
|------|-----------------|---|
| 1    | 0627-00900-0000 | GLASS TOP   |
| 2    | 0627-00107-0000 | GLASS MOLDING (2 REQ'D.)  |
| 3    | 0627-90700-0000 | GLASS MASK  |
| 4    | 0017-00042-0144 | FLIPPER BUTTON (8 REQ'D.) - SEE SEP. DRWG.                                |
| 5    | A627-00059-0000 | SHOOTER ASSY. (4 REQ'D.) - SEE SEP. DRWG.                                 |
|      | 0017-00101-0644 | #10-24 x 1-1/4 CARRIAGE BOLTS (8 REQ'D.)                                  |
|      | 0017-00104-0037 | 3/16 I.C. x 3/4" O.D. STL. WASHER (12 REQ'D.)                             |
|      | 0017-00103-0017 | #10-24 HEX NUT (8 REQ'D.)   |
|      | 0017-00101-0599 | #8-32 x 3/8 HEX HD. S.M.S. (4 REQ'D.)                                     |
|      | 0017-00101-0029 | #8 x 1" BLK. PHL. OVAL HD. WD. SCR. (4 REQ'D.)                            |
|      | 0627-00161-0000 | BALL SHOOTER RETAINER BRKT.   |
| 6    | A090-00056-00GR | FRONT DOOR ASSY. (2 REQ'D.)   |
| 7    | 0090-00002-01GR | FRONT DOOR FRAME (2 REQ'D.)   |
|      | 0017-00101-0555 | #6-32 x 5/16 HEX HD. SELF TAP. M.S. (6 REQ'D.)                            |
| 8    | 0627-00104-0000 | LEGS (4 REQ'D.)   |
|      | 0627-00176-0000 | LEG WASHER (4 REQ'D.)   |
|      | 0017-00103-0067 | 3/8 - 16 LOCK NUT (4 REQ'D.)  |
| 9    | 0017-00003-0064 | LINE CORD   |
|      |                 | <u>NOT SHOWN LIST</u>   |
|      | A627-00005-0000 | CASH BOX ASSY. (2 REQ'D.)   |
|      | A627-00056-0000 | CASH BOX COVER ASSY. (2 REQ'D.)   |
|      | 0625-00117-0000 | GUIDE (2 REQ'D.)  |
|      | A625-00024-0000 | GUIDE BRKT. ASSY. (2 REQ'D.)  |
|      | 0017-00101-0628 | #8-32 x 3/4 CARRIAGE BOLTS (8 REQ'D.)                                     |
|      | 0017-00103-0008 | #8-32 HEX NUT (8 REQ'D.)  |
|      | A627-00089-0000 | LOCATING PIN ASSY.  |
|      | 0017-00101-0025 | #8 x 1/2 HEX HD. S.M.S. (4 REQ'D.)  |
|      | 0017-00006-0072 | PLAY BALL   |
|      | 0017-00009-0033 | BASSICK CLAMPS (4 REQ'D.)   |
|      | A547-00035-00BR | SPEAKER BEZEL ASSY. (2 REQ'D.)  |
|      | 0549-00128-0000 | SPEAKER GRILLE (2 REQ'D.)   |
|      | 0017-00103-0008 | #8-32 HEX NUT (8 REQ'D.)  |
|      | 0627-00144-0000 | CORNER BRKT. (4 REQ'D.)   |
|      | A627-00047-0000 | TIE DOWN CORNER BRKT. ASSY. (4 REQ'D.)                                    |
|      | 0017-00101-0598 | #8-32 x 5/16 HEX WASHER HD. S.T.M.S.<br>(20 REQ'D. FOR ALL CORNER BRKTS.) |
|      | 0627-00915-0000 | RUBBER SEAL - 63" LG.   |

**NO. 627 - ROTATION VIII - TOP PLAYFIELD ASSY. (ASSEMBLED)**

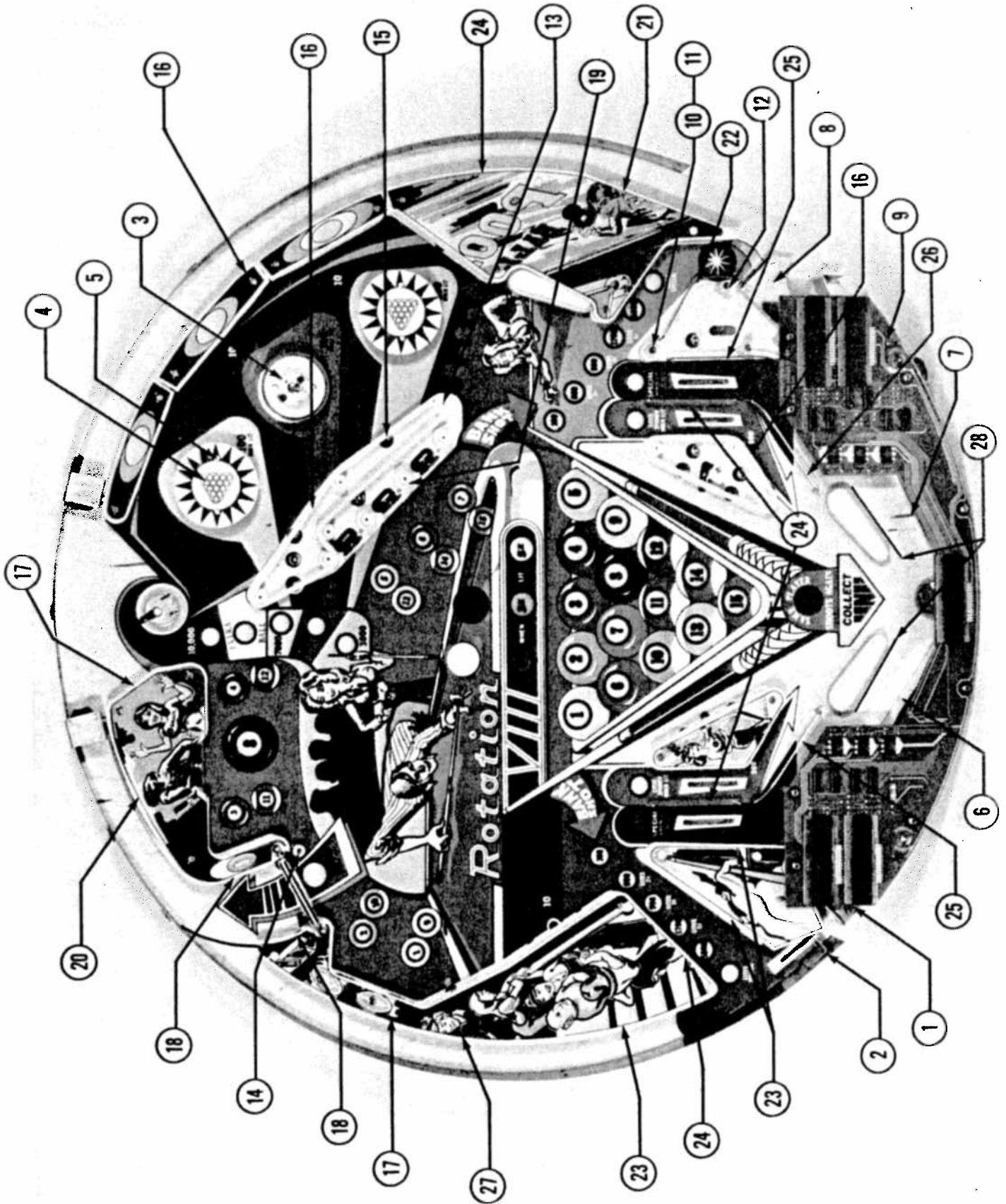


NO. 627 – ROTATION VIII – TOP PLAYFIELD ASSY. (ASSEMBLED)

ORDER BY PART NUMBER ONLY

| ITEM | PART NO         | DESCRIPTION  |
|------|-----------------|--|
| 1    | 0627-00902-0100 | LIGHT SHIELD   |
| 2    | 0627-00902-0200 | LIGHT SHIELD   |
| 3    | 0627-00902-0300 | LIGHT SHIELD   |
| 4    | 0627-00902-0500 | LIGHT SHIELD   |
| 5    | 0627-00902-0500 | LIGHT SHIELD   |
| 6    | 0627-00902-0600 | LIGHT SHIELD   |
| 7    | 0627-00902-0700 | LIGHT SHIELD   |
| 8    | 0627-00902-0800 | LIGHT SHIELD   |
| 9    | 0627-00902-0900 | LIGHT SHIELD   |
| 10   | 0627-00902-1000 | LIGHT SHIELD   |
| 11   | 0627-00902-1100 | LIGHT SHIELD   |
| 12   | 0017-00009-0302 | ACORN NUT (11 REQ'D.)  |
| 13   | 0017-00101-0067 | #6 x 3/8 PHIL PAN HD. M.S. - NICKEL PLATED<br>(30 REQ'D.)    |
| 14   | 0627-00906-0000 | BOTTOM ARCH COVER  |
| 15   | 0017-00101-0077 | #6-32 x 5/16 PHIL PAN HD. M.S. - NICKEL PLATED<br>(8 REQ'D.) |
|      | 0017-00103-0066 | 1/4-20 PAL NUT (8 REQ'D.)                                    |
|      | 0017-00101-0076 | #8-32 x 3/4 SLOT HEX EXT. SEMS. (8 REQ'D.)                   |
|      | 0627-00702-0000 | ARCH SUPPORT POST - CHROME (8 REQ'D.)                        |
| 16   | 0627-00914-0000 | CARD SET (ALL INSTRUCTION & RATING<br>CARD INCLUDED)         |
| 17   | A627-00015-0000 | BALL GATE ASSY. – LEFT                                       |
| 18   | A627-00015-0100 | BALL GATE ASSY. – RIGHT                                      |
| 19   | A627-00017-0000 | SWING GATE ASSY.   |
| 20   | A627-00021-0000 | SPINNER GATE & WIRE ASSY.                                    |
| 21   | 0017-00103-0053 | #6-32 ACORN NUT - NICKEL (2 REQ'D.)                          |
| 22   | A627-00098-0000 | FLIPPER ASSY. (3 REQ'D.)                                     |
| 23   | A627-00012-0000 | SIDE RAIL ASSY.  |

**NO. 627 - ROTATION VIII - TOP PLAYFIELD ASSY. (PARTIALLY DISASSEMBLED)**



**MIDWAY MFG. CO.**  
A BALLY COMPANY

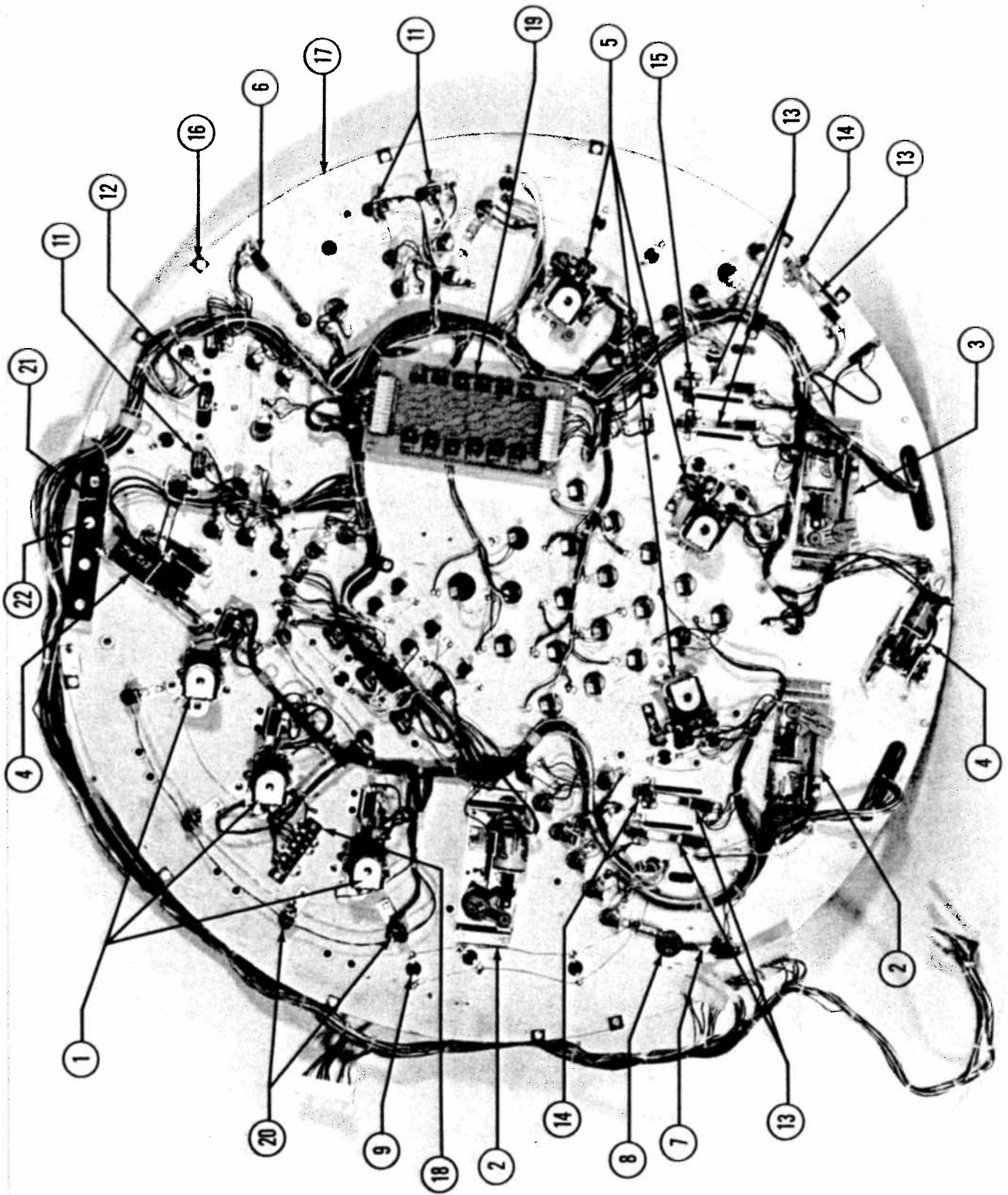
NO. 627 - ROTATION VIII - TOP PLAYFIELD ASSY. (PARTIALLY DISASSEMBLED)

ORDER BY PART NUMBER ONLY

| ITEM | PART NO         | DESCRIPTION                                 |
|------|-----------------|---|
| 1    | A627-00019-0000 | ELECTRIC SHOOTER ASSY.                      |
| 2    | 0627-00122-0000 | BALL STOP BRKT. - ELECTRIC SHOOTER          |
|      | 0017-00101-0013 | #6 x 7/16 SLOT. HEX HD. S.M.S. (2 REQ'D.)   |
| 3    | A627-00022-0000 | THUMPER BUMPER ASSY. (3 REQ'D.)             |
| 4    | 0017-00042-0185 | THUMPER BUMPER CAPS (3 REQ'D.)              |
| 5    | 0017-00101-0783 | #4 x 3/8 PHIL. PAN HD. S.M.S. (6 REQ'D.)    |
| 6    | 0627-00108-0000 | BALL RETURN BRKT. - LEFT                    |
| 7    | 0627-00109-0000 | BALL RETURN BRKT. - RIGHT                   |
|      | 0017-00101-0060 | #8 x 7/16 HEX WASHER HD. S.M.S. (8 REQ'D.)  |
| 8    | 0627-00121-0000 | BALL RETURN BRKT. (SMALL) - RIGHT           |
|      | 0017-00101-0020 | #6 x 1" HEX WASHER HD. S.M.S. (3 REQ'D.)    |
| 9    | A084-91306-B627 | BOTTOM ARCH P.C. BOARD ASSY. (DISPLAY P.C.) |
| 10   | 0017-00009-0362 | POST - SHORT (9 REQ'D.)                     |
| 11   | 0017-00009-0332 | SPECIAL STUD SHORT (13 REQ'D.)              |
| 12   | 0017-00042-0184 | SPACER (8 REQ'D.)                           |
| 13   | 0614-00908-0000 | PUSH-IN POST (38 REQ'D.)                    |
| 14   | 0017-00009-0408 | MINI POST                                   |
|      | 0017-00041-0604 | RUBBER BUMPER                               |
|      | 0017-00104-0003 | #8 EXTERNAL LOCKWASHER                      |
|      | 0017-00103-0008 | #8-32 HEX NUT                               |
| 15   | 0017-00041-0612 | RUBBER - 2" I.D.                            |
| 16   | 0017-00009-0306 | RUBBER - 2-1/2" I.D. (8 REQ'D.)             |
| 17   | 0017-00009-0310 | RUBBER - 1-1/2" I.D. (2 REQ'D.)             |
| 18   | 0017-00041-0607 | RUBBER - 1" I.D. (2 REQ'D.)                 |
| 19   | 0017-00009-0365 | RUBBER - 1/4" I.D. (10 REQ'D.)              |
| 20   | 0627-00115-0000 | WIRE FORM - TOP                             |
| 21   | 0627-00114-0000 | WIRE FORM - 7-3/4 (2 REQ'D.)                |
| 22   | 0627-00116-0000 | WIRE FORM - BOTTOM - 3-3/4                  |
| 23   | 0627-00117-0000 | WIRE FORM - BOTTOM - 4-1/2 (3 REQ'D.)       |
| 24   | 0017-00009-0293 | WIRE FORM - 3-1/2 (4 REQ'D.)                |
| 25   | 0017-00009-0299 | WIRE FORM - LEFT BENT (2 REQ'D.)            |
| 26   | 0017-00009-0300 | WIRE FORM - RIGHT BENT                      |
| 27   | 0017-00009-0326 | WIRE FORM - 4"                              |
| 28   | 0627-00172-0000 | WIRE FORM - FLIPPER (2 REQ'D.)              |



**NO. 627 – ROTATION VIII – BOTTOM PLAYFIELD ASSEMBLY**



**MIDWAY MFG. CO.**  
A BALLY COMPANY

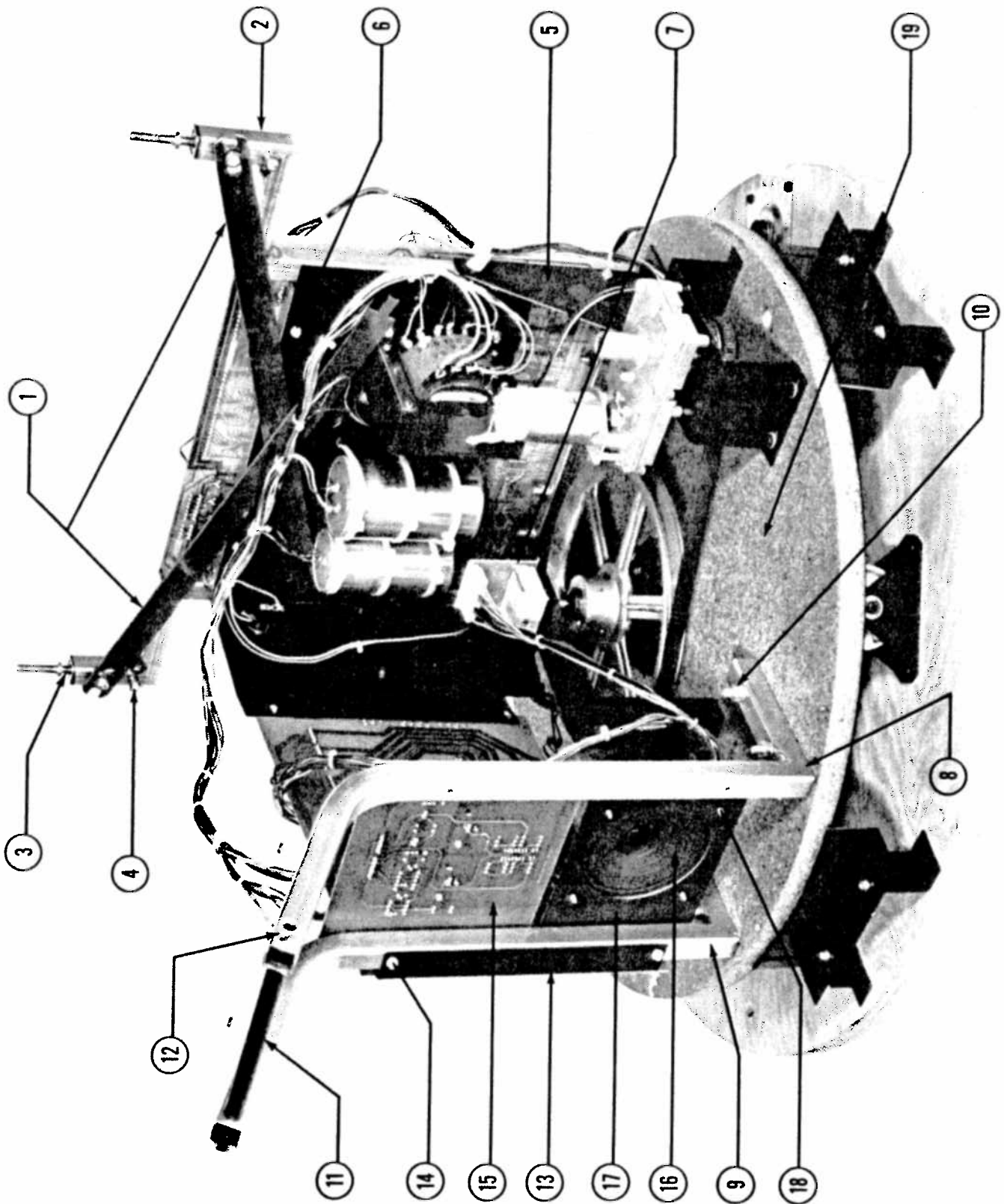
NO. 627 – ROTATION VIII – BOTTOM PLAYFIELD ASSEMBLY

ORDER BY PART NUMBER ONLY

| ITEM | PART NO         | DESCRIPTION   |
|------|-----------------|---|
| 1    | A627-00023-0000 | THUMPER BUMPER COIL & BRKT. ASSY. (3 REQ'D.)  |
|      | A627-00025-0000 | THUMPER BUMPER SWITCH & BRKT. ASSY. (3 REQ'D.)  |
| 2    | A627-00013-0000 | FLIPPER ASSY. –RIGHT (2 REQ'D.)   |
| 3    | A627-00014-0000 | FLIPPER ASSY. –LEFT   |
| 4    | A627-00031-0000 | KICK – OUT ASSY. (2 REQ'D.)   |
|      | A627-00033-0000 | KICK – OUT SWITCH ASSY. (2 REQ'D.)  |
| 5    | A627-00024-0000 | SLING SHOT COIL & KICKER ASSY. (3 REQ'D.)   |
| 6    | A627-00035-0000 | SPINNER SWITCH ASSY.  |
|      | 0017-00101-0079 | #5 x 1 PHIL. RND. HD. S.M.S. (2 REQ'D.)   |
| 7    | A627-00036-0000 | SWITCH ASSY. (STAR ROLL-OVER)   |
|      | 0017-00101-0080 | #5 x 7/8 PHIL. RND. HD. S.M.S. (2 REQ'D.)   |
| 8    | 0017-00031-0035 | LIGHT SOCKET (STAR ROLL-OVER)   |
|      | 0017-00003-0053 | LIGHT BULB (STAR ROLL-OVER)   |
| 9    | 0017-00031-0030 | LIGHT SOCKETS (15 REQ'D.)   |
|      | 0017-00003-0182 | LIGHT BULBS (15 REQ'D.)   |
| 10   | 0017-00031-0034 | INSERT LIGHT SOCKETS (57 REQ'D.)  |
|      | 0017-00003-0226 | LIGHT BULBS (57 REQ'D.)   |
| 11   | A627-00027-0000 | TARGET SWITCH & BRKT. ASSY. – ROUND (7 REQ'D.)  |
| 12   | A627-00026-0000 | TARGET SWITCH & BRKT. ASSY. – RECT.   |
| 13   | A627-00034-0000 | WIRE ROLL-OVER SWITCH ASSY. (5 REQ'D.)  |
|      | 0017-00101-0078 | #5 x 3/4 PHIL. RND. HD. S.M.S. (10 REQ'D.)  |
| 14   | A627-00029-0000 | ROLL-OVER WIRE ASSY. – RIGHT (3 REQ'D.)   |
| 15   | A627-00030-0000 | ROLL-OVER WIRE ASSY. – LEFT (2 REQ'D.)  |
| 16   | 0017-00101-0060 | #8 x 7/16 HEX HD. S.M.S. (30 REQ'D. FOR FOLLOWING ASSYS. – SIDE RAIL, BALL GATE L & R, FLIPPER L & R, AND SWING GATE) |
| 17   | A627-00012-0000 | SIDE RAIL ASSY.   |
| 18   | A031-00003-0000 | TERMINAL STRIP (6 POSITION)   |
|      | 0017-00101-0013 | #6 x 7/16 SLOT HEX HD. S.M.S. (2 REQ'D.)  |
| 19   | A084-90501-C627 | SOLENOID DRIVER P.C. ASSY.  |
|      | 0017-00101-0697 | #8 x 1-1/2 HEX HD. S.M.S. (4 REQ'D.)  |
| 20   | A627-00028-0000 | SWITCH & BRKT. ASSY. UPRIGHT (14 REQ'D.)  |
| 21   | 0627-00187-0000 | HINGE BRACKET   |
| 22   | 0017-00101-0728 | #10 x 1/2 HEX HD. S.M.S. (4 REQ'D.)   |
|      | 0017-00101-0013 | #6 x 7/16 HEX HD. S.M.S. (124 REQ'D. TO FASTEN ALL OTHER ASSYS. TO BOTTOM OF PLAYFIELD.)                              |



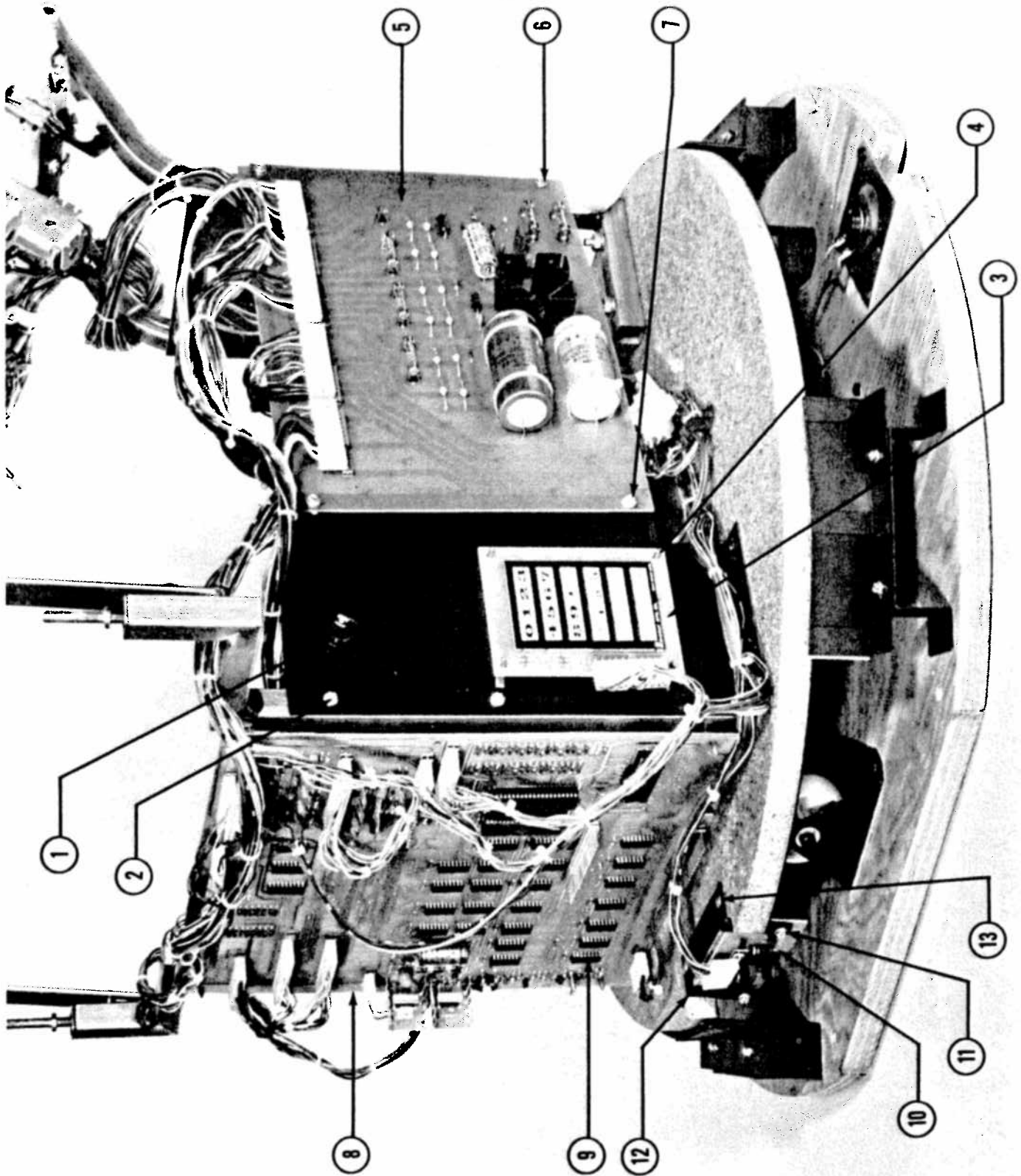
NO. 627 – ROTATION VIII – ROTOR ASSEMBLY



**NO. 627 – ROTATION VIII – ROTOR ASSEMBLY**  
**ORDER BY PART NUMBER ONLY**

| <b>ITEM</b> | <b>PART NO</b>  | <b>DESCRIPTION</b>                               |
|-------------|-----------------|--|
| 1           | 0627-00167-0000 | PLAYFIELD SUPPORT (2 REQ'D.)                     |
| 2           | 0627-00101-0000 | PLAYFIELD SUPPORT FRAME – FRONT                  |
| 3           | 0017-00103-0065 | 5/16 - 18 x 3/4 SQ. ADAPTOR (2 REQ'D.)           |
| 4           | 0627-00715-0000 | PLAYFIELD SUPPORT BUSHING (4 REQ'D.)             |
|             | 0017-00104-0078 | 1/2 O.D. x .200 I.D. x .040 WASHER (4 REQ'D.)    |
|             | 0017-00101-0082 | #10 x 3/4 SLOT HEX WASH. HD. S.M.S. (4 REQ'D.)   |
| 5           | 0627-00135-0000 | TRANSFORMER BRKT.                                |
| 6           | 0017-00101-0598 | #8 - 32 x 5/16 HEX WASH. HD. S.T.M.S. (4 REQ'D.) |
| 7           | A082-91104-A000 | SHAFT ENCODER P.C. BRD. ASSY.                    |
| 8           | A627-00010-0000 | PLAYFIELD SUPPORT FRAME & HINGE SHAFT ASSY.      |
| 9           | 0627-00100-0000 | PLAYFIELD SUPPORT FRAME – REAR                   |
| 10          | 0017-00102-0026 | 1/4-20 x 2" CARRIAGE BOLTS (8 REQ'D.)            |
|             | 0017-00104-0005 | 1/4 SPLIT LOCK WASHER (8 REQ'D.)                 |
|             | 0017-00103-0018 | 1/4-20 NUT (8 REQ'D.)                            |
| 11          | 0627-00705-0000 | HINGE SHAFT                                      |
| 12          | 0017-00104-0006 | 3/8 SPLIT LOCKWASHER (2 REQ'D.)                  |
|             | 0017-00103-0026 | 3/8-16 NUT (2 REQ'D.)                            |
| 13          | 0627-00136-0000 | POWER SUPPLY P.C. BRKT.                          |
| 14          | 0017-00101-0598 | #8-32 x 5/16 HEX WASH. HD. S.T.M.S. (2 REQ'D.)   |
| 15          | A082-90502-C000 | MOTOR DRIVER P.C. BRD. ASSY.                     |
|             | 0017-00101-0598 | #8-32 x 5/16 HEX WASH HD. S.T.M.S. (2 REQ'D.)    |
| 16          | 0017-00003-0161 | SPEAKER  |
| 17          | 0627-00134-0000 | SPEAKER BRACKET                                  |
| 18          | 0017-00101-0598 | #8-32 x 5/16 HEX WASH. HD. S.T.M.S. (4 REQ'D.)   |
| 19          | MT00-00070-0000 | ROTOR TRANSFORMER – NOT SHOWN                    |

NO. 627 - ROTATION VIII - ROTOR ASSEMBLY



**MIDWAY MFG. CO.**  
A BALLY COMPANY

**NO. 627 – ROTATION VIII – ROTOR ASSEMBLY**  
**ORDER BY PART NUMBER ONLY**

| ITEM | PART NO         | DESCRIPTION  |
|------|-----------------|--|
| 1    | 0627-00137-0000 | KEY PAD BRKT.  |
| 2    | 0017-00101-0598 | #8-32 x 5/16 HEX WASH. HD. S.T.M.S. (3 REQ'D.)               |
| 3    | A082-91316-A000 | KEYBOARD P.C. BRD. ASSY.                                     |
| 4    | 0017-00007-0140 | KEYBOARD P.C. SUPPORTS (4 REQ'D.)                            |
| 5    | A082-90400-E000 | POWER SUPPLY P.C. BRD. ASSY.                                 |
| 6    | 0017-00101-0598 | #8 x 32 x 5/16 HEX WASH. HD. S.M.S. (2 REQ'D.)               |
| 7    | 0017-00101-0626 | #8-32 x 5/16 PAN HD. M.S. (2 REQ'D.)                         |
|      | 0017-00103-0008 | #8-32 HEX NUT (2 REQ'D')                                     |
|      | 0017-00104-0003 | #8 SPLIT LOCKWASHER (2 REQ'D.)                               |
| 8    | A084-91313-G627 | GAME LOGIC P.C. BOARD ASSY.                                  |
| 9    | A082-91320-C000 | CHARACTERIZATION P.C. BRD. ASSY.                             |
| 10   | A082-91317-B000 | TABLE POSITION P.C. BRD. ASSY.                               |
| 11   | 0017-00101-0598 | #8-32 x 5/16 HEX HD. S.T.M.S. (2 REQ'D.)                     |
| 12   | 0627-00143-0000 | P.C. MTG. BRKT.  |
| 13   | 0017-00101-0639 | #8-32 x 1-1/4 CARRIAGE BOLTS M.S. (2 REQ'D.)                 |
|      | 0017-00104-0022 | 3/16 I.D. x 7/16 O.D. x 3/64 WASHER (2 REQ'D.)               |
|      | 0017-00103-0008 | #8-32 HEX NUT (2 REQ'D.)                                     |
|      |                 | <u>NOT SHOWN LIST</u>  |
|      | A080-90200-G627 | COMMUTATOR P.C. BRD. ASSY.                                   |
|      | 0614-00911-2000 | SPACERS (8 REQ'D.)   |
|      | 0017-00008-0086 | GREASE (UNION CARBIDE – LB-55X)<br>(USED ON COMMUTATOR P.C.) |
|      | 0017-00101-0082 | #10-3/4 HEX WASH. HD. S.M.S. (4 REQ'D.)                      |
|      | 0627-00708-0000 | PLAYFIELD STOP (2 REQ'D.)                                    |
|      | 0017-00101-0053 | #8 x 7/8 PHIL. HD. S.M.S. (2 REQ'D.)                         |
|      | 0627-00923-0000 | GUIDE-PLAYFIELD SUPPORT FRAME (2 REQ'D.)                     |

**NO. 627 - ROTATION VIII - FALSE BOTTOM ASSY.**

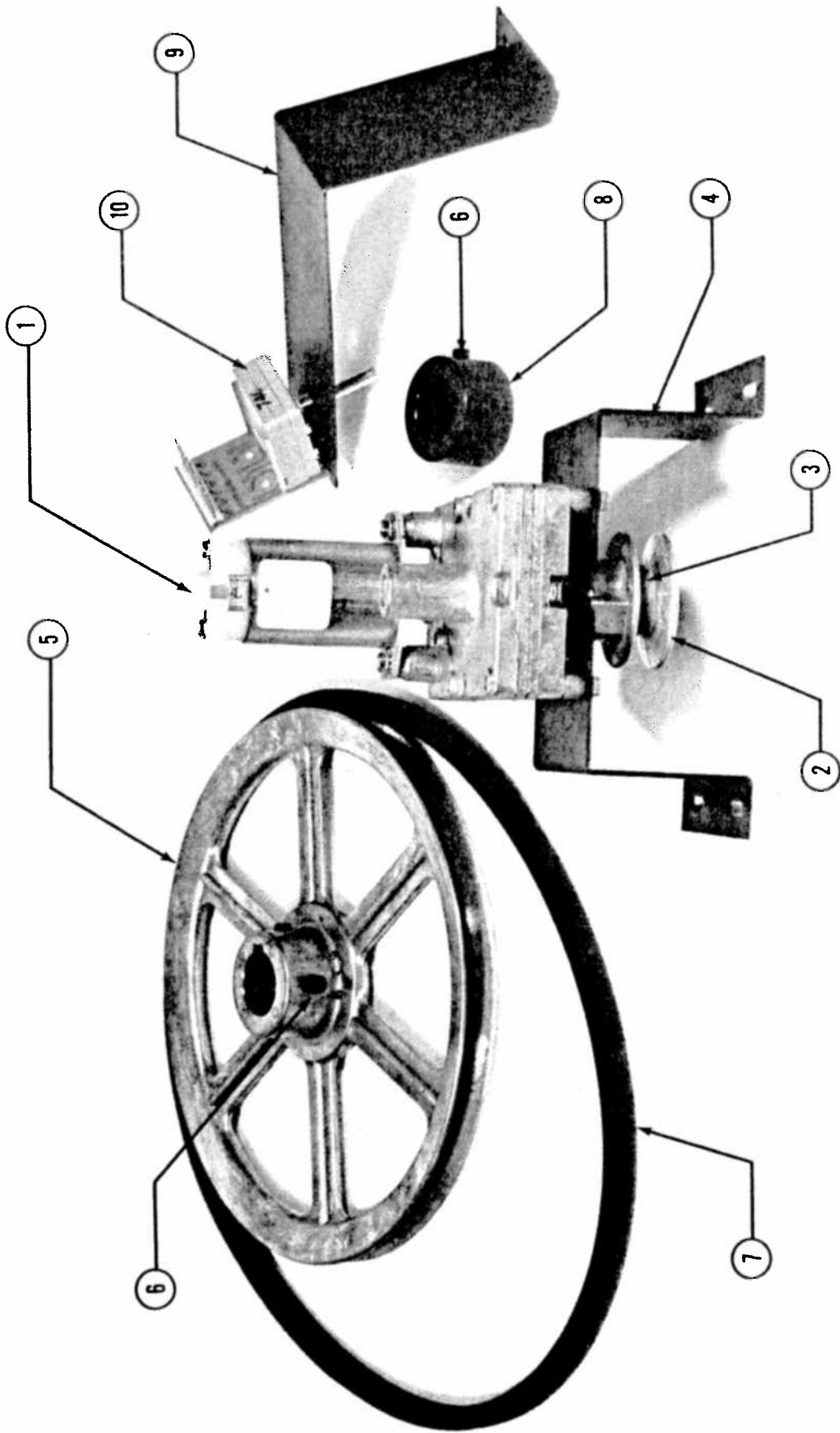


NO. 627 - ROTATION VIII - FALSE BOTTOM ASSY.

ORDER BY PART NUMBER ONLY

| ITEM | PART NO         | DESCRIPTION   |
|------|-----------------|---|
| 1    | A627-00007-0000 | MAIN HUB & SHAFT ASSY.  |
|      | 0017-00101-0672 | #10-32 x 1-1/8 CARRIAGE BOLTS M.S. (4 REQ'D.)                           |
|      | 0017-00104-0023 | 7/23 I.D. x 7/16 O.D. STEEL WASHER (4 REQ'D.)                           |
|      | 0017-00103-0011 | #10-32 ELAS. STOP NUT (4 REQ'D.)  |
|      | 0017-00101-0791 | #8-32 x 1/4 C'BORED SELF-LOCKING<br>KNURLED SOCKET SET SCREW (2 REQ'D.) |
| 2    | 0627-00126-0000 | FOLLOWER BRKT. - STRAIGHT SWITCH HOLES                                  |
| 2    | 0627-00177-0000 | FOLLOWER BRKT. - ANGLED SWITCH HOLES                                    |
| 3    | 0017-00101-0026 | #8 x 5/8 SLOT. HEX HD. S.M.S. (16 REQ'D')                               |
| 4    | A627-00011-0000 | WIPER ASSY. (COMMUTATOR) (24 REQ'D.)                                    |
| 5    | 0017-00101-0524 | #5-40 x 1/2 PAN HD. MACH. SCR. (48 REQ'D.)                              |
| 6    | 0020-00202-0000 | SWITCH PLATE (24 REQ'D.)  |
| 7    | A627-00063-0000 | PLATE SPOT WELDING ASSY. (4 REQ'D.)                                     |
| 8    | 0627-00909-0000 | SENSING LABEL (4 REQ'D.)  |
| 9    | 0017-00101-0598 | #8-32 x 5/16 HEX WASHER HD. S.T.M.S. (8 REQ'D.)                         |
| 10   | 0627-00106-0000 | ROLLER MTG. BRKT. (3 REQ'D.)  |
| 11   | 0627-00901-0000 | MOLDED ROTOR WHEEL (3 REQ'D.)   |
| 12   | 0017-00101-0672 | #10-32 x 1-1/8 CARRIAGE BOLTS (6 REQ'D.)                                |
|      | 0017-00104-0023 | 7/32 I.D. x 7/16 O.D. STEEL WASHER (6 REQ'D.)                           |
|      | 0017-00103-0011 | #10-32 ELAS. STOP NUT (6 REQ'D.)  |
| 13   | 0017-00101-0788 | 1/4 DIA. x 1-1/4 LG. SHOULDER SCR. (3 REQ'D.)                           |
|      | 0017-00104-0035 | 1/4 I.D. FLAT WASHER (3 REQ'D.)   |
|      | 0017-00103-0040 | #10-24 SELF LOCK, HEX NUT (3 REQ'D.)                                    |
| 14   | 0017-00003-0114 | LINE FILTER   |
| 15   | 0017-00101-0014 | #6 x 1/2 SLOT HEX HD. W/WASHER SCR. (2 REQ'D.)                          |
| 16   | 0017-00032-0005 | ON-OFF SWITCH   |
| 17   | 0567-00106-0100 | SWITCH MTG. PLATE   |
| 18   | 0017-00101-0017 | #6 x 1/2 HEX HD. BLK. S.M.S. (6 REQ'D.)                                 |
| 19   | 0017-00003-0064 | LINE CORD   |
| 20   | A627-00088-0000 | COMMUTATOR SWITCH CABLE ASSY.   |
|      | MT00-00072-0000 | COIN DOOR LIGHT TRANSFORMER - NOT SHOWN                                 |
| 21   |                 | 2 volt Xformer & lamp fuse.   |

**NO. 627 – ROTATION VIII – MOTOR & DRIVE SYSTEM**



**MIDWAY MFG. CO.**  
A BALLY COMPANY

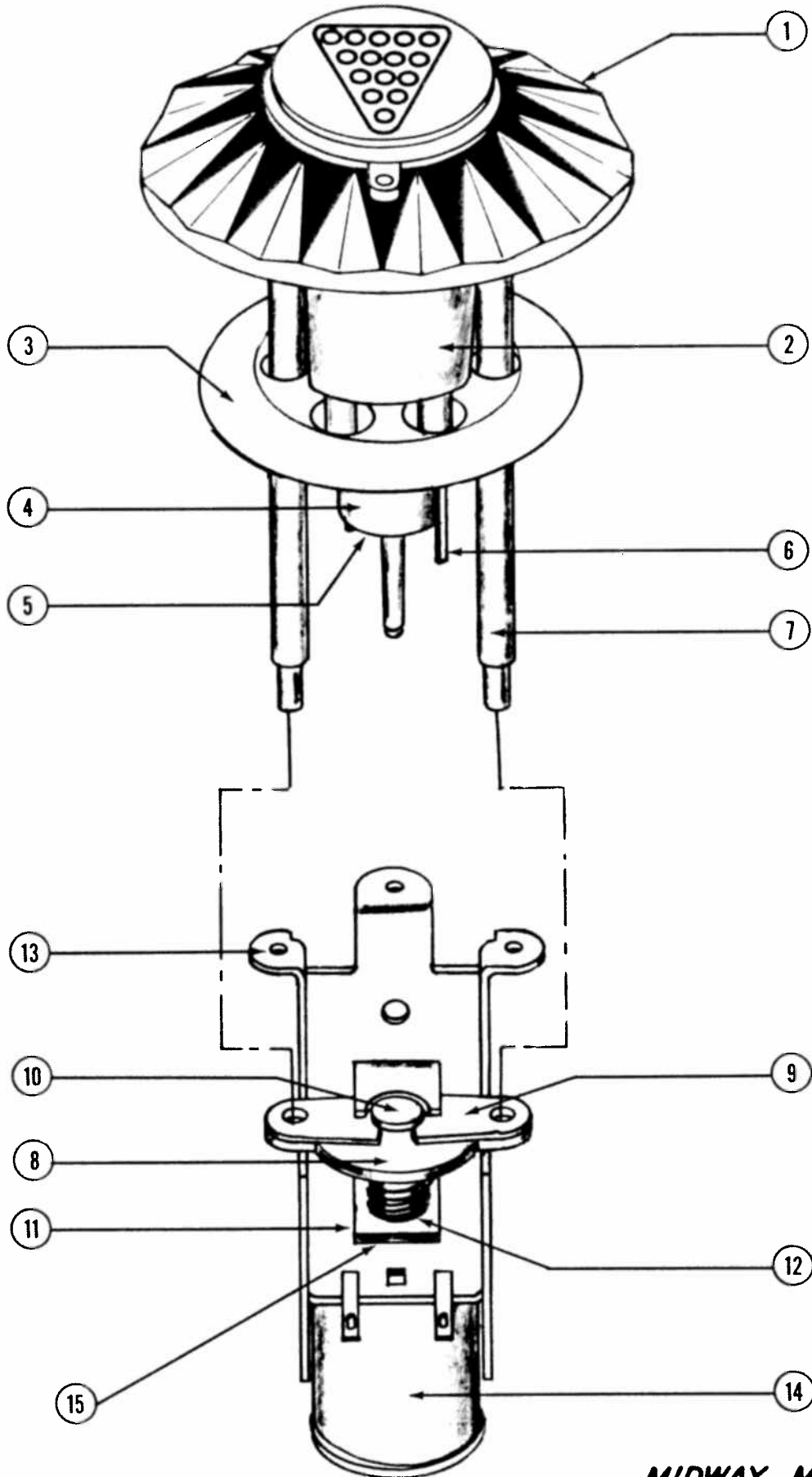
NO. 627 - ROTATION VIII - MOTOR & DRIVE SYSTEM

ORDER BY PART NUMBER ONLY

| ITEM | PART No         | DESCRIPTION                                      |
|------|-----------------|--|
| 1    | 0040-00616-0000 | DRIVE MOTOR                                      |
| 2    | 0627-00903-0000 | SINGLE "V" GROOVED PULLEY - 1-3/4"               |
| 3    | 0017-00007-0068 | 3/32 x 7/8 ROLL PIN                              |
| 4    | 0627-00105-0000 | MOTOR MTG. BRKT.                                 |
|      | 0017-00101-0555 | #8-32 x 5/16 HEX WASHER HD. S.T.M.S. (4 REQ'D.)  |
| 5    | 0627-00904-0000 | SINGLE "V" GROOVED PULLEY - 9"                   |
| 6    | 0017-00101-0790 | 5/16 - 18 x 1/2 CUP PT. SOC. SET SCR. (4 REQ'D.) |
| 7    | 0017-00009-0423 | "V" - BELT - 37" LG.                             |
| 8    | 0627-00707-0000 | COLLAR   |
| 9    | 0627-00127-0000 | ENCODER BRKT.                                    |
|      | 0017-00101-0026 | #8 x 5/8 SLOT. HEX. HD. S.M.S. (2 REQ'D.)        |
| 10   | A082-91104-A000 | P.C. SHAFT ANGLE ENCODER ASSY.                   |
|      | 0567-00700-0000 | ADJUSTING NUT                                    |
|      | 0017-00101-0301 | #6-32 x 1/8 SOC. SET SCR. (2 REQ'D.)             |



**NO. 627 – ROTATION VIII – THUMPER BUMPER & COIL ASSY.**



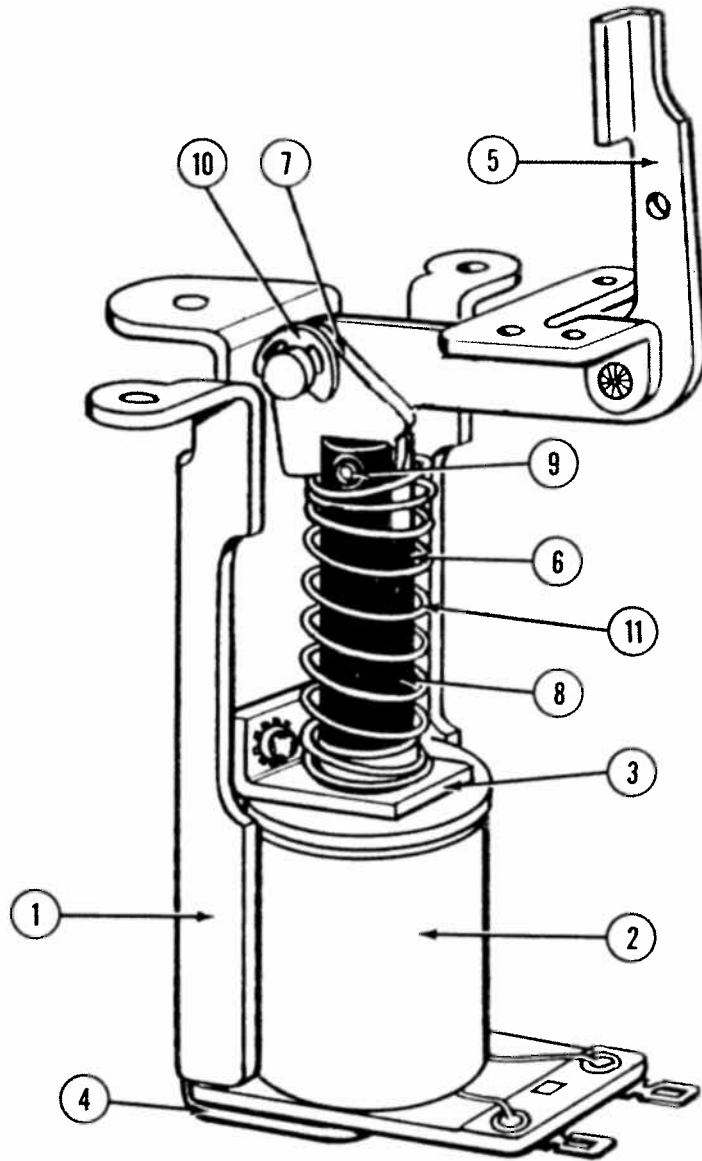
**MIDWAY MFG. CO.**  
A BALLY COMPANY

NO. 627 – ROTATION **VIII** – THUMPER BUMPER & COIL ASSY.

*ORDER BY PART NUMBER ONLY*

| ITEM | PART N <sup>o</sup> | DESCRIPTION                       |
|------|---------------------|-----------------------------------|
| 1    | 0017-00042-0185     | THUMPER BUMPER CAP                |
| 2    | 0017-00042-0122     | BUMPER BODY                       |
| 3    | 0017-00042-0121     | THUMPER WASHER                    |
| 4    | 0017-00042-0123     | BUMPER BASE                       |
| 5    | 0010-00236-0000     | SPRING                            |
| 6    | 0017-00031-0031     | LAMP SOCKET                       |
|      | 0017-00003-0053     | LAMP (UNDER CAP)                  |
| 7    | 0606-00040-0000     | FLANGE & STUD ASSY.               |
| 8    | 0017-00009-0339     | BAKELITE PLATE                    |
| 9    | 0017-00009-0338     | STEEL PLATE                       |
| 10   | 0606-00728-0000     | PLUNGER                           |
| 11   | 0017-00009-0337     | COIL BRACKET                      |
| 12   | 0010-00237-0000     | SPRING                            |
| 13   | A627-00202-0000     | CORE PLUG ASSY.                   |
| 14   | A627-00045-0000     | COIL ASSY.                        |
| 15   | 0017-00104-0073     | SPRING WASHER                     |
|      | A627-00022-0000     | UPPER THUMPER BUMPER ASSY.        |
|      | A627-00023-0000     | COIL & BRACKET ASSY.              |
|      |                     | <u>ITEMS NOT ILLUSTRATED</u>      |
|      | 0064-030XX-XXXX     | DIODE (UNDER COIL BRACKET)        |
|      | 0017-00101-0555     | #6-32 x 5/16 HEX HD. S/T M.S. (2) |
|      | 0017-00101-0528     | #5-40 x 3/4 R.H.M.S. (2)          |
|      | 0017-00009-0411     | SWITCH BRACKET                    |
|      | A627-00038-0000     | THUMPER BUMPER SWITCH ASSY.       |
|      | 0020-00202-0000     | SWITCH PLATE                      |

**NO. 627 – ROTATION VIII – SLING SHOT KICKER COIL ASSY.**

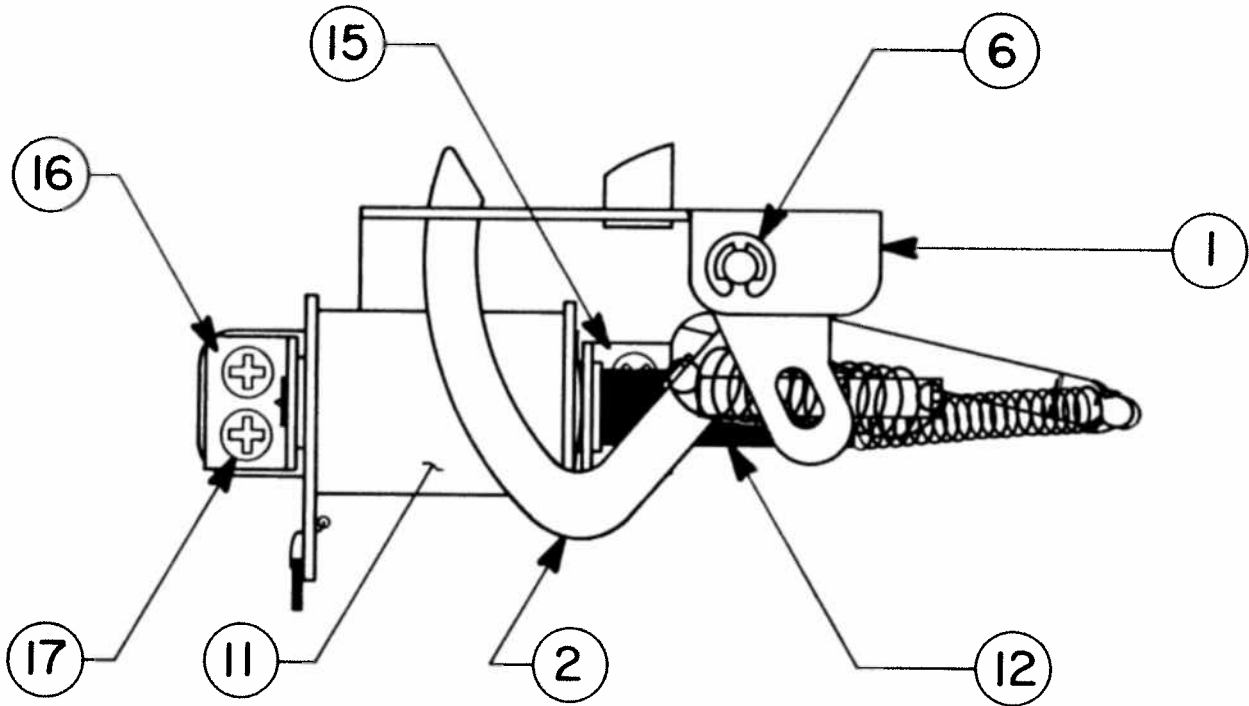


NO. 627 – ROTATION **VIII** – SLING SHOT KICKER COIL ASSY.

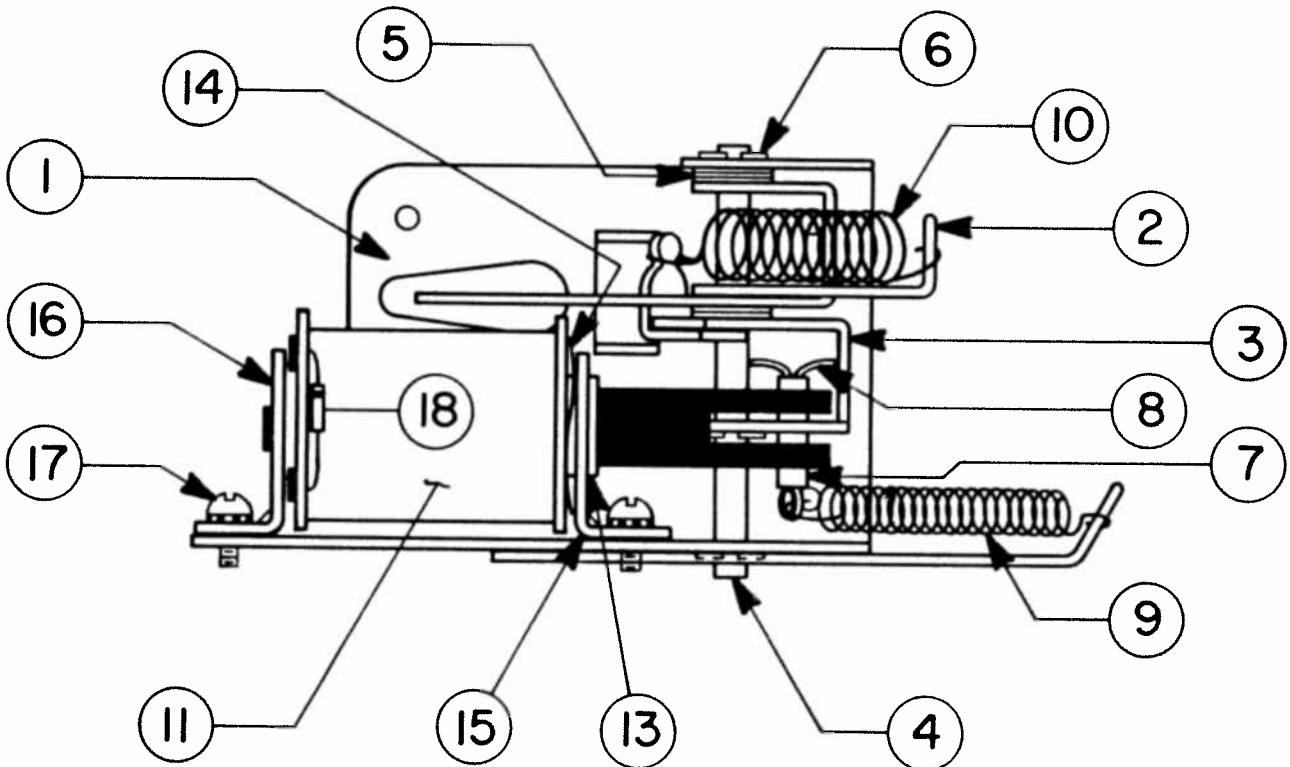
*ORDER BY PART NUMBER ONLY*

| ITEM | PART N <sup>o</sup> | DESCRIPTION                               |
|------|---------------------|---|
| 1    | 0606-00033-0000     | CORE PLUG ASSY.                           |
| 2    | A627-00044-0000     | COIL ASSY.                                |
| 3    | 0017-00009-0341     | SOLENOID BRACKET                          |
| 4    | 0606-00033-0000     | CORE PLUG ASSY.                           |
| 5    | A614-00005-0000     | KICKER ARM ASSY.                          |
| 6    | 0606-00043-0000     | PLUNGER & LINK ASSY.                      |
| 7    | 0017-00009-0317     | KICKER LINK                               |
| 8    | 0606-00707-0000     | PLUNGER                                   |
| 9    | 0017-00007-0073     | ROLL PIN 1/8 x 7/16                       |
| 10   | 0017-00100-0021     | RETAINING RING                            |
| 11   | 0010-00239-0000     | COMPRESSION SPRING                        |
|      | A627-00043-0000     | CORE PLUG & COIL ASSY.                    |
|      | A627-00024-0000     | SLINGSHOT KICKER COIL<br>ASSY. (COMPLETE) |
|      | 0064-030XX-XXXX     | DIODE – IN-4004                           |

**NO. 627 – ROTATION VIII – KICK OUT ASSY.**



**SIDE VIEW**



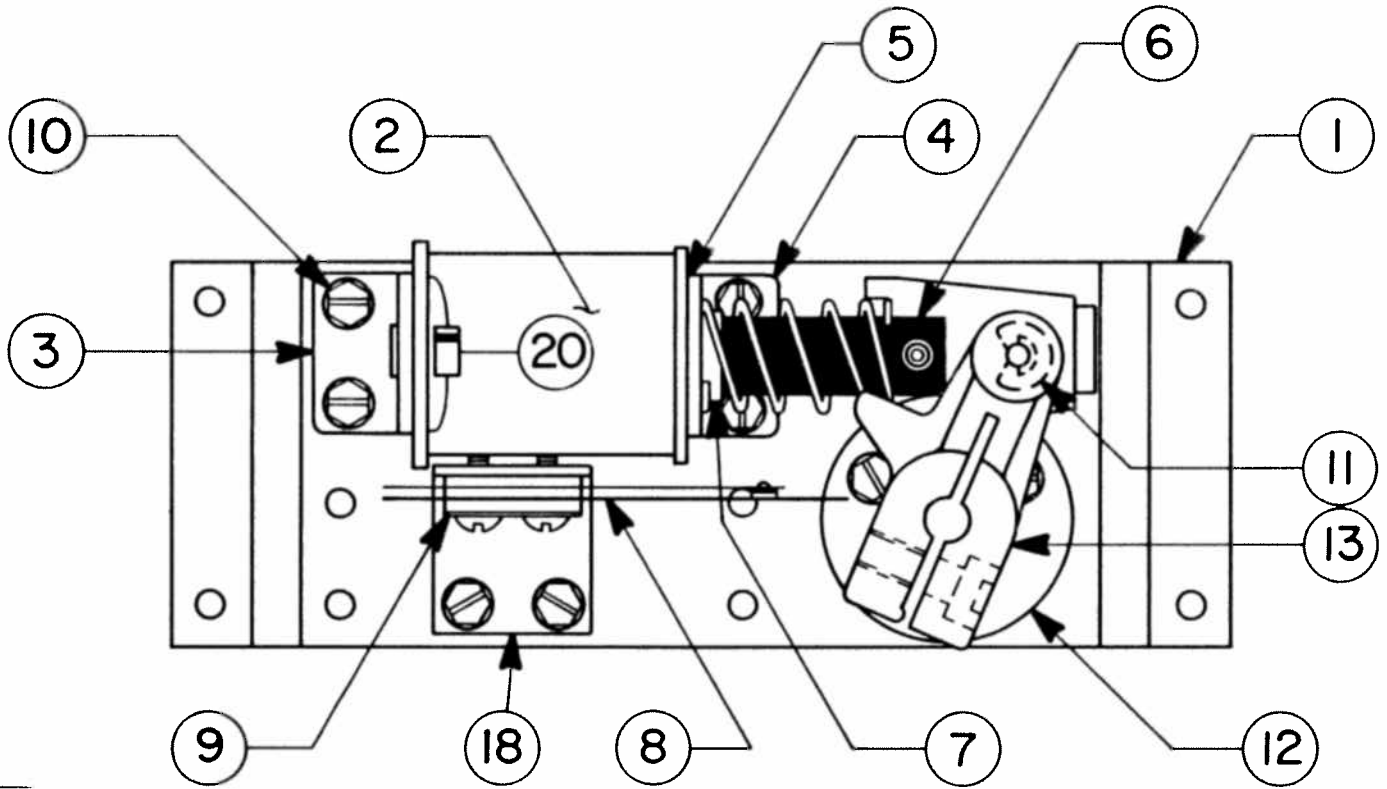
**TOP VIEW**

NO. 627 – ROTATION VIII – KICK OUT ASSY.

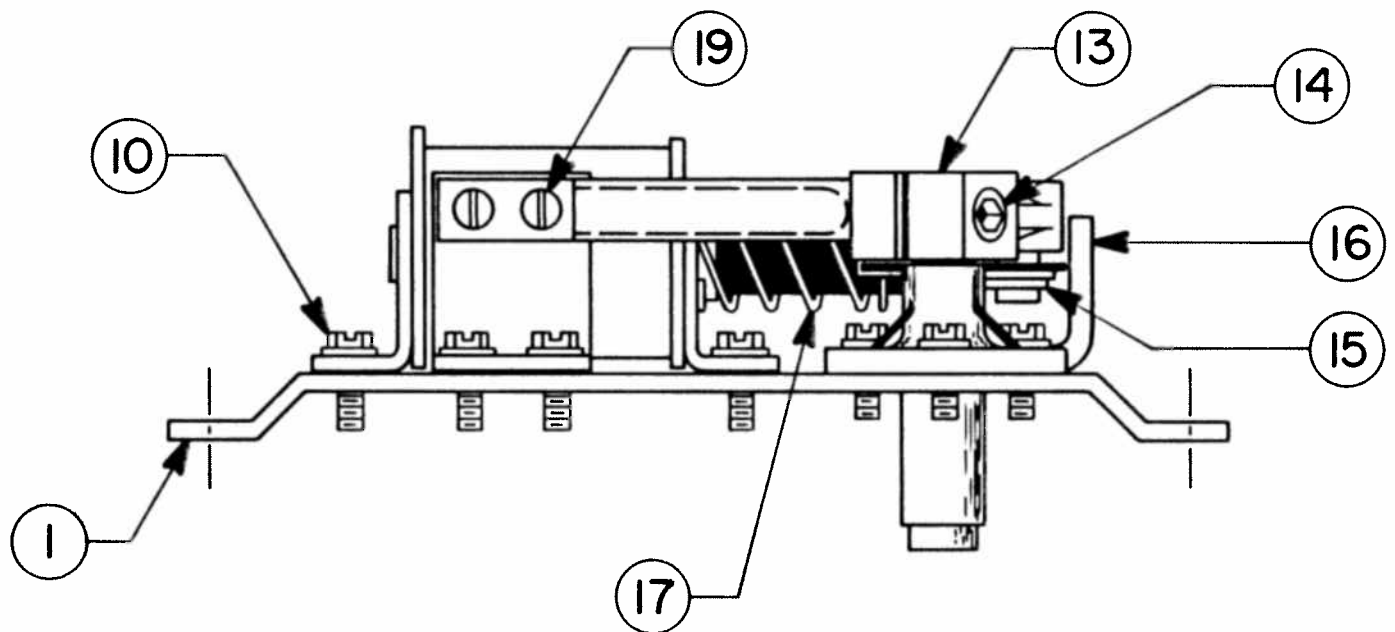
*ORDER BY PART NUMBER ONLY*

| ITEM | PART NO         | DESCRIPTION                         |
|------|-----------------|-------------------------------------|
| 1    | A627-00053-0000 | MTG. BRKT. ASSY.                    |
| 2    | A627-00055-0000 | BALL KICKER ASSY.                   |
| 3    | A627-00052-0000 | LEVER ARM ASSY.                     |
| 4    | 0627-00713-0000 | SHAFT                               |
| 5    | 0017-00104-0085 | WASHERS (5 REQ'D.)                  |
| 6    | 0017-00100-0110 | RETAINING RING (3 REQ'D.)           |
| 7    | 0017-00007-0089 | 3/16 x 5/8 ROLL PIN                 |
| 8    | 0017-00007-0046 | 1/16 x 1" COTTER PIN                |
| 9    | 0010-00589-0000 | SPRING                              |
| 10   | 0010-00588-0000 | SPRING                              |
| 11   | A627-00044-0000 | COIL ASSY.                          |
| 12   | 0627-00714-0000 | PLUNGER SHAFT                       |
| 13   | 0017-00042-0147 | SLEEVE                              |
| 14   | 0017-00104-0073 | SPRING WASHER                       |
| 15   | 0627-00160-0000 | SOLENOID BRACKET                    |
| 16   | A627-00054-0000 | CORE PLUG ASSY.                     |
| 17   | 0017-00101-0555 | #6-32 HEX HD. S./T. M.S. (4 REQ'D.) |
| 18   | 0064-030XX-XXXX | DIODE – IN-4004                     |
|      | A627-00031-0000 | KICK OUT ASSY. – COMPLETE           |

**NO. 627 – ROTATION VIII – FLIPPER UNIT ASSY.**



**TOP VIEW**



**SIDE VIEW**

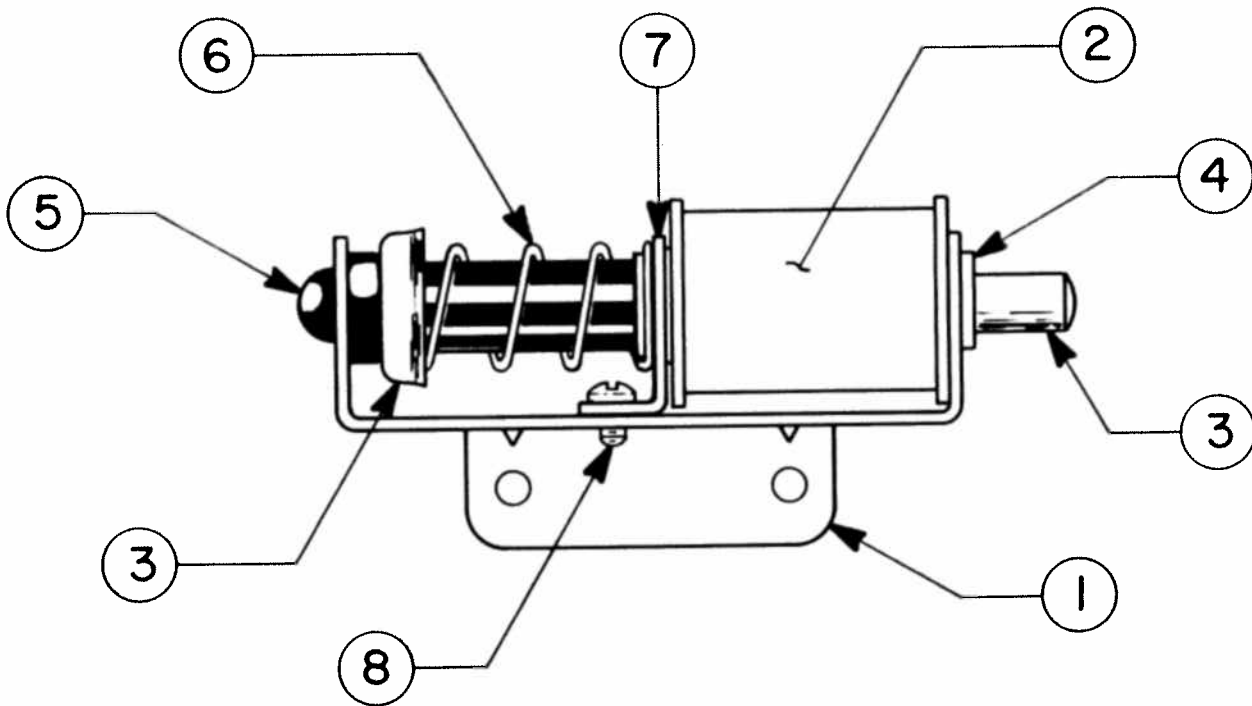
NO. 627 - ROTATION VIII - FLIPPER UNIT ASSY.

ORDER BY PART NUMBER ONLY

| ITEM | PART NO         | DESCRIPTION   |
|------|-----------------|---|
| 1    | 0017-00009-0360 | FLIPPER MTG. BRKT.                                  |
| 2    | A627-00092-0000 | COIL ASSY.  |
| 3    | 0606-00030-0000 | CORE PLUG & BRKT. ASSY.                             |
| 4    | 0017-00009-0343 | COIL BRACKET  |
| 5    | 0017-00104-0073 | 33/64 I.D. x 7/8 O.D. x .012 SHAKEPROOF SPR. WASHER |
| 6    | 0606-00029-0000 | PLUNGER & LINK ASSY.                                |
| 7    | 0017-00042-0147 | COIL TUBEING  |
| 8    | 0606-00017-0000 | SWITCH ASSY. - FLIPPER                              |
| 9    | 0020-00202-0000 | SWITCH PLATE  |
| 10   | 0017-00101-0754 | #8-32 x 3/8 SLT. HEX HD. S.T.M.S. (11)              |
| 11   | 0017-00100-0021 | 7/32 RETAINING RING                                 |
| 12   | 0017-00009-0330 | BEARING - FLIPPER                                   |
| 13   | A614-00076-0000 | LEVER ARM ASSY. - RIGHT                             |
|      | A614-00077-0000 | LEVER ARM ASSY. - LEFT (NOT SHOWN)                  |
| 14   | 0017-00102-0060 | 1/4-20 x 1/2 SOCK. HD. CAP SCREW                    |
| 15   | 0017-00104-0074 | NYLON WASHER  |
| 16   | 0017-00009-0342 | BRKT. FLIPPER STOP                                  |
| 17   | 0010-00246-0000 | SPRING  |
| 18   | 0614-00117-0000 | SWITCH BRKT.  |
| 19   | 0017-00101-0520 | #5-40 x 3/8 PAN HD. MACH. SCR. (2)                  |
| 20   | 0064-030XX-XXXX | DIODE   |
|      | A627-00013-0000 | FLIPPER UNIT ASSY. - (RIGHT) - COMPLETE             |
|      | A627-00014-0000 | FLIPPER UNIT ASSY. - (LEFT) - COMPLETE              |



NO. 627 – ROTATION VIII – ELECTRIC SHOOTER ASSY.

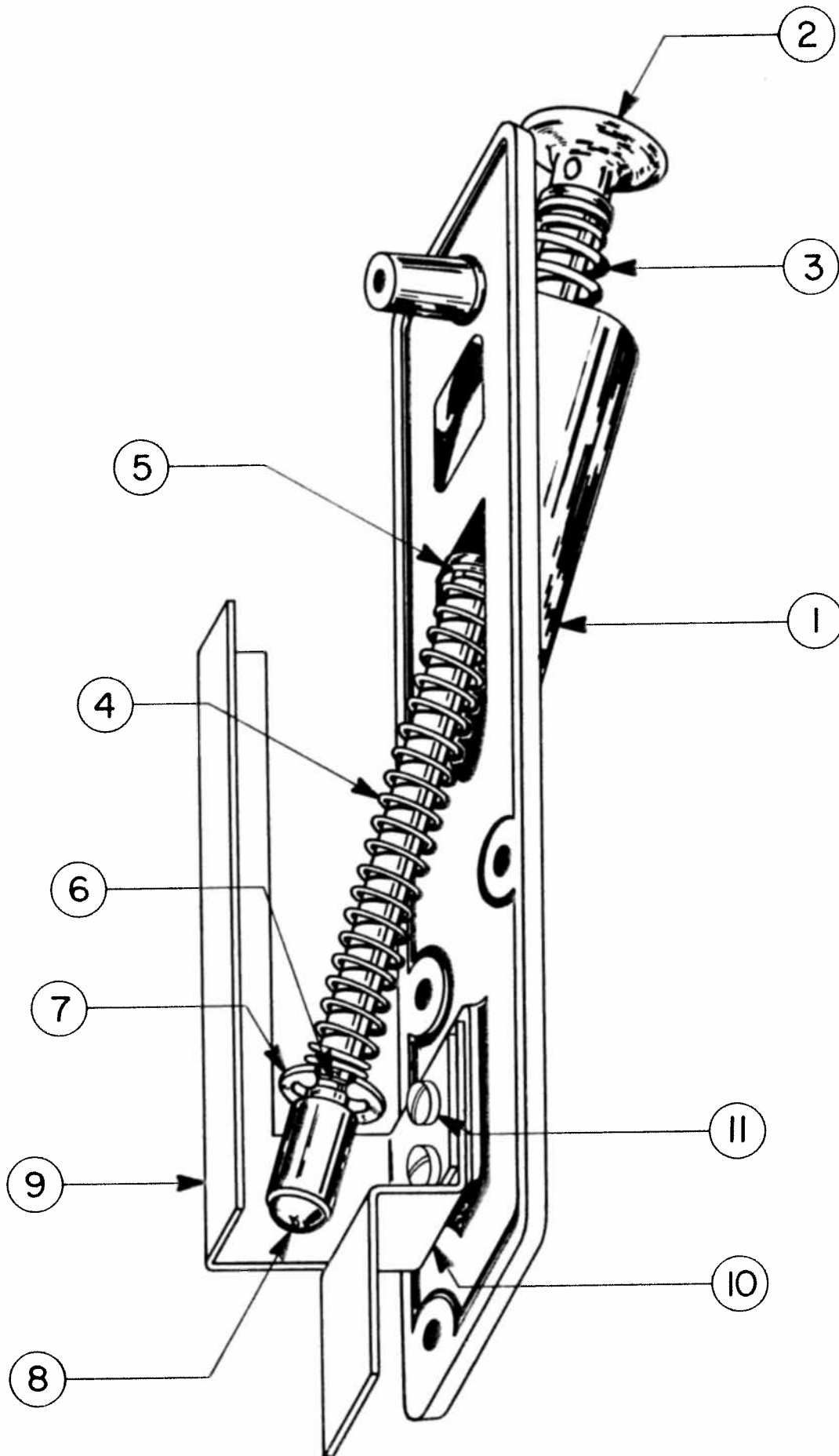


NO. 627 - ROTATION VIII - ELECTRIC SHOOTER ASSY.

ORDER BY PART NUMBER ONLY

| ITEM | PART No         | DESCRIPTION                               |
|------|-----------------|---|
| 1    | 0627-00151-0000 | KICKER FRAME                              |
| 2    | A627-00094-0000 | COIL ASSY.                                |
| 3    | A627-00051-0000 | PLUNGER & STRIKER                         |
| 4    | 0017-00041-0611 | SLEEVE                                    |
| 5    | 0627-00913-0000 | PLUG BUMPER                               |
| 6    | 0010-00587-0000 | SPRING                                    |
| 7    | 0627-00150-0000 | COIL BRACKET                              |
| 8    | 0017-00101-0773 | #8-32 x 1/4 PHIL. PAN HD. M.S. (2 REQ'D.) |
| 9    | 0064-030XX-XXXX | DIODE - IN4004                            |
|      | 0017-00104-0073 | SPRING WASHER - SHAKEPROOF - NOT SHOWN    |
|      | A627-00019-0000 | ELECTRIC SHOOTER ASSY. - COMPLETE         |

**NO. 627 – ROTATION VIII – BALL SHOOTER ASSY.**

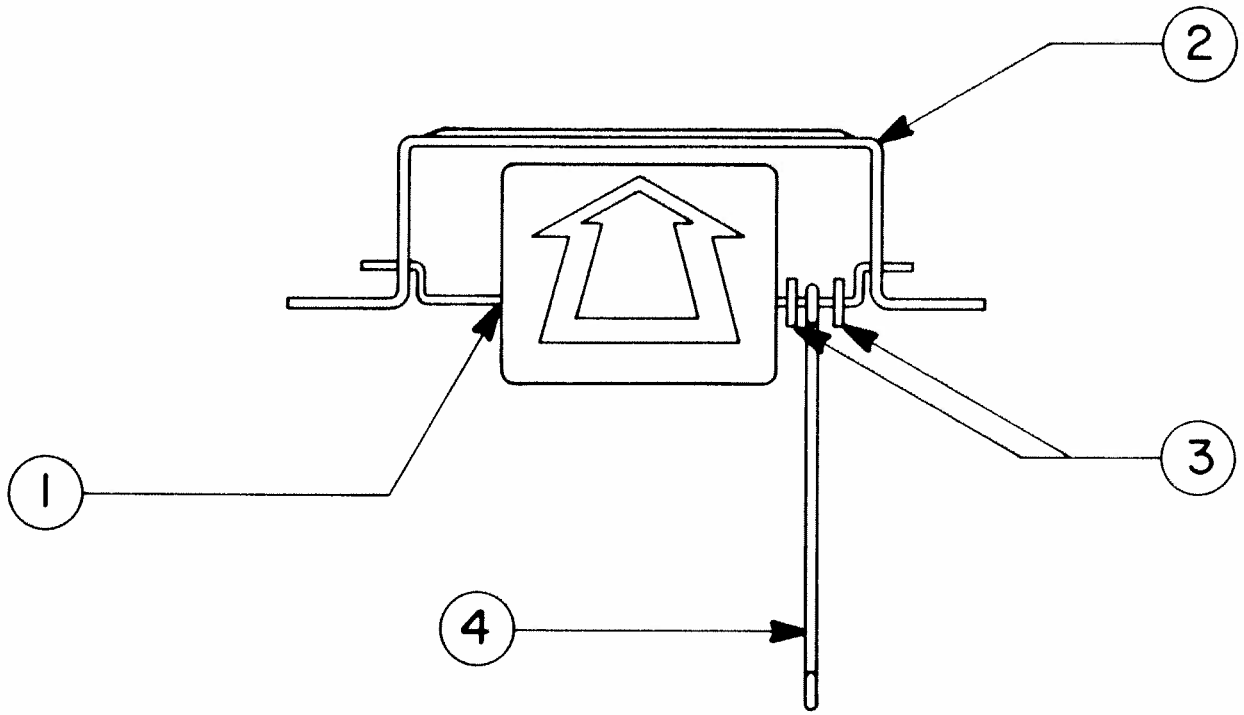


NO. 627 - ROTATION VIII - BALL SHOOTER ASSY.

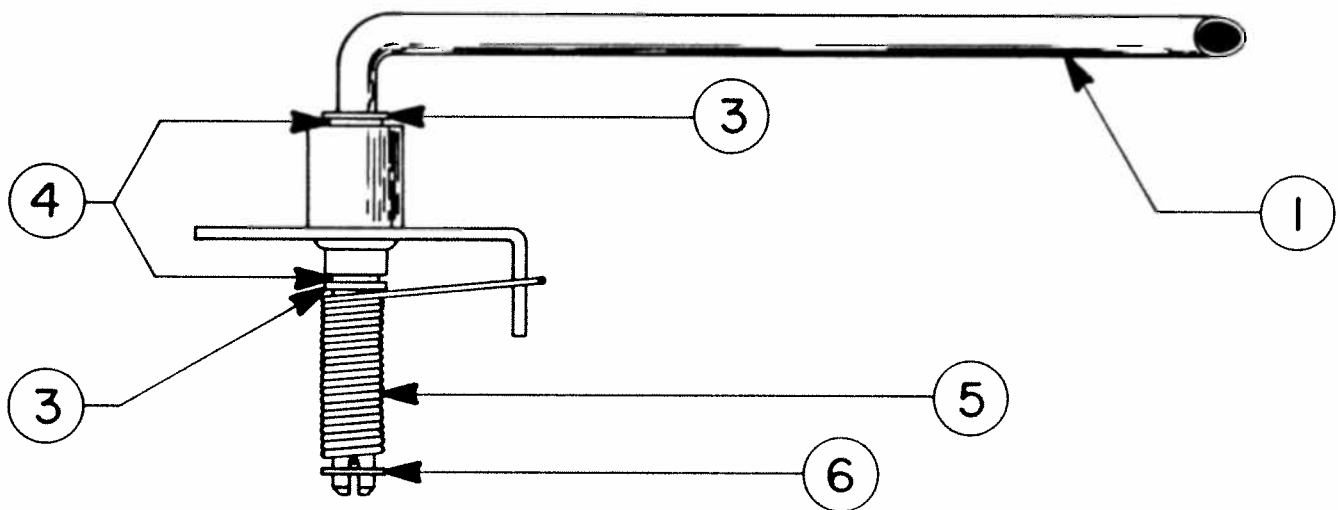
ORDER BY PART NUMBER ONLY

| ITEM | PART NO         | DESCRIPTION                   |
|------|-----------------|-------------------------------|
| 1    | A627-00058-0000 | HOUSING ASSY.                 |
| 2    | A627-00057-0000 | KNOB & ROD ASSY.              |
| 3    | 0010-00235-0000 | COMPRESSION SPRING - SHORT    |
| 4    | 0010-00252-0000 | COMPRESSION SPRING - LONG     |
| 5    | 0017-00104-0033 | WASHER                        |
| 6    | 0017-00009-0369 | SPRING CUP                    |
| 7    | 0017-00100-0037 | RETAINING RING                |
| 8    | 0017-00041-0044 | SHOOTER TIP                   |
| 9    | 0627-00185-0000 | SHOOTER COVER PLATE           |
| 10   | 0627-00189-0000 | SHOOTER BRKT.                 |
| 11   | 0017-00101-0593 | #8-32 x 1/4 PAN HD. SEMS M.S. |
|      | A627-00059-0000 | BALL SHOOTER ASSY. - COMPLETE |

**NO. 627 – ROTATION VIII – SPINNER GATE & SWING GATE ASSY.**



**SPINNER GATE ASSY.**



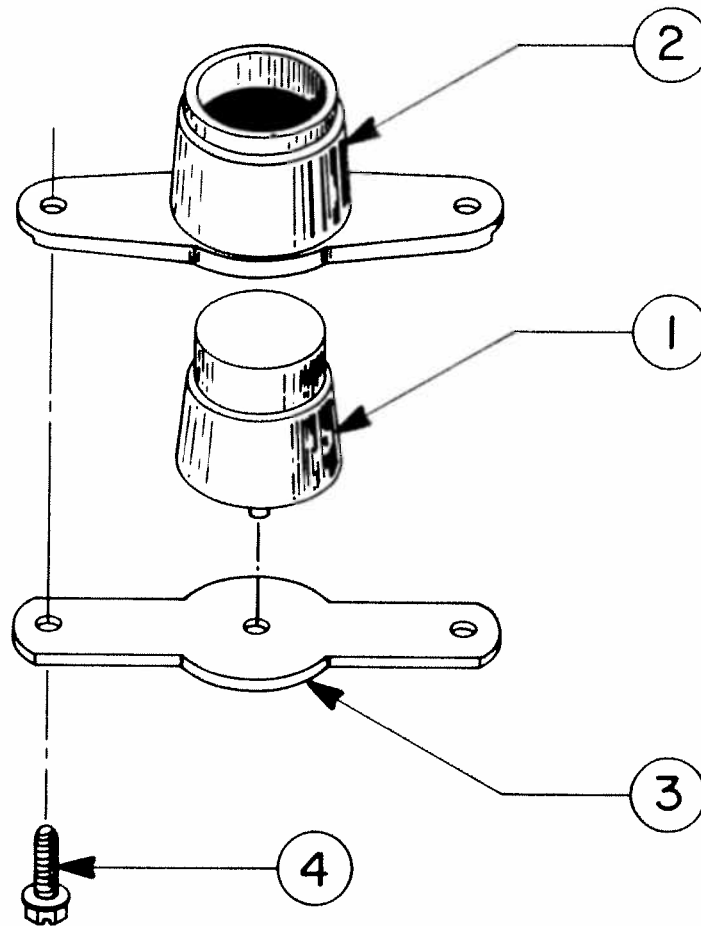
**SWING GATE ASSY.**

NO. 627 – ROTATION VIII – SPINNER GATE & SWING GATE ASSYS.

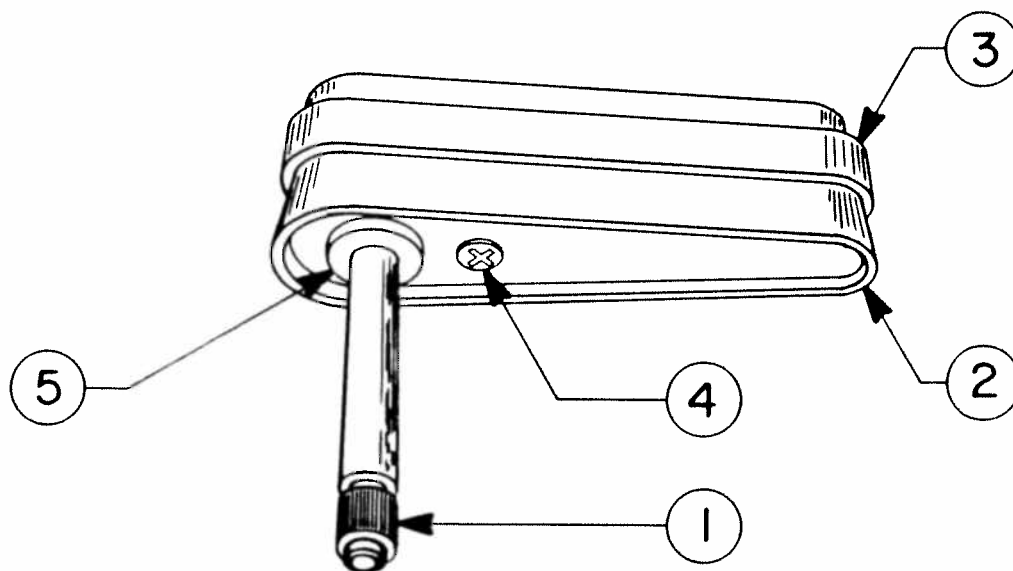
ORDER BY PART NUMBER ONLY

| ITEM | PART NO         | DESCRIPTION                                |
|------|-----------------|--|
| 1    | A627-00049-0000 | <u>SPINNER GATE ASSY.</u><br>SPINNER ASSY. |
| 2    | 0627-00148-0000 | TARGET HOLDER BRKT.                        |
| 3    | 0017-00104-0084 | WASHERS (2 REQ'D.)                         |
| 4    | 0010-00585-0000 | SPINNER TARGET WIRE                        |
|      | A627-00021-0000 | SPINNER GATE & WIRE ASSY. – COMPLETE       |
|      |                 | <u>SWING GATE ASSY.</u>                    |
| 1    | 0627-00118-0000 | SWING GATE                                 |
| 2    | A627-00016-0000 | SWING GATE SUPT. ASSY.                     |
| 3    | 0017-00100-0018 | "E" – RING (3 REQ'D.)                      |
| 4    | 0017-00042-0173 | NYLINER (2 REQ'D.)                         |
| 5    | 0010-00251-0000 | TORSION SPRING                             |
|      | A627-00017-0000 | SWING GATE ASSY. – COMPLETE                |

**NO. 627 – ROTATION VIII – FLIPPER BUTTON & FLIPPER ASSYS.**



**FLIPPER BUTTON ASSY.**



**FLIPPER ASSY.**

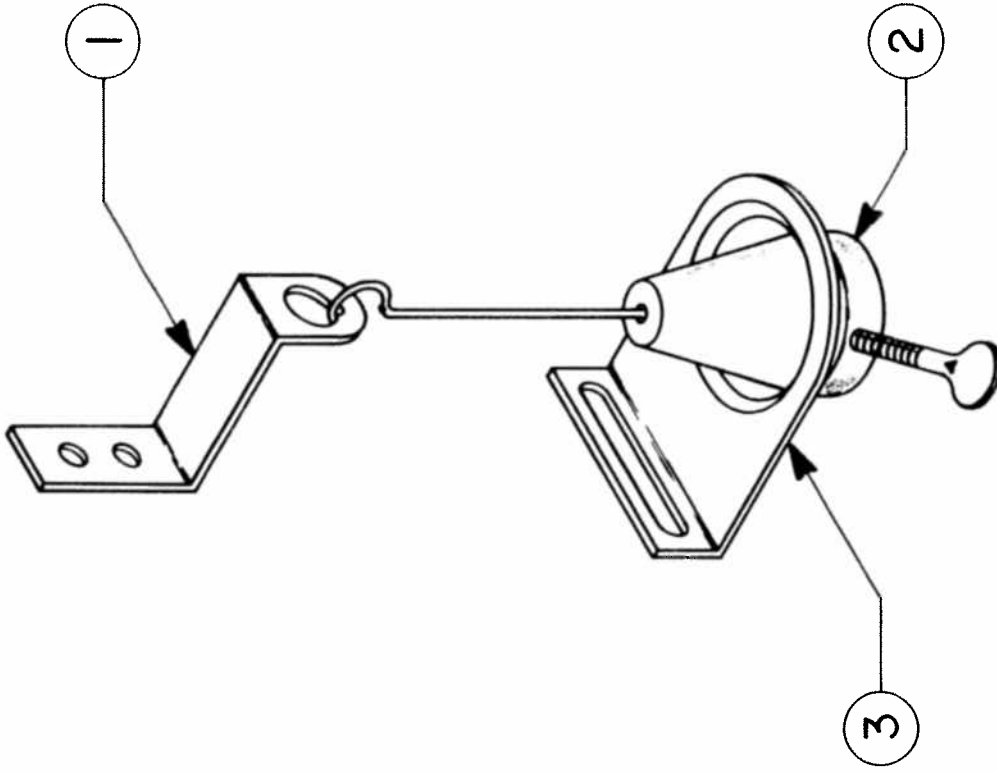
NO. 627 – ROTATION VIII – FLIPPER BUTTON & FLIPPER ASSYS.

*ORDER BY PART NUMBER ONLY*

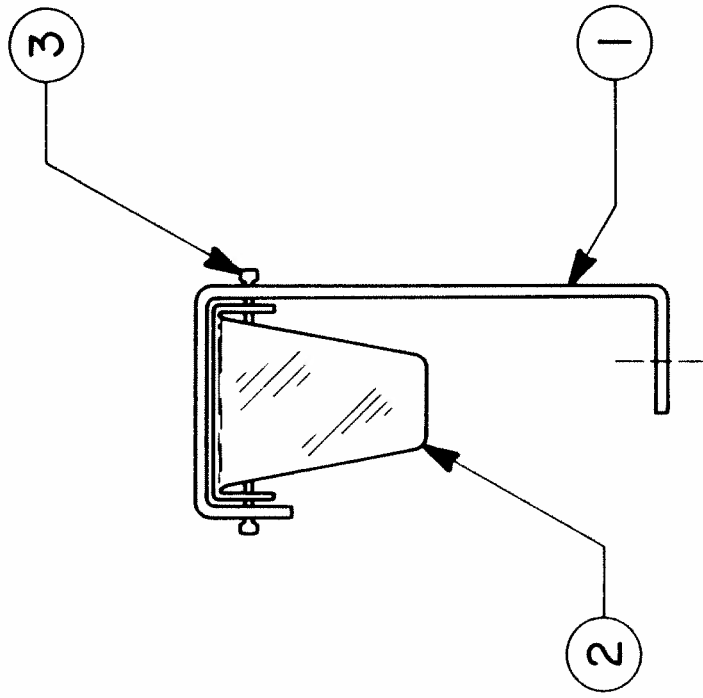
| ITEM | PART NO         | DESCRIPTION                                 |
|------|-----------------|---|
|      |                 | <p><u>FLIPPER BUTTON ASSY.</u></p>          |
| 1    | 0017-00042-0144 | FLIPPER BUTTON                              |
| 2    | 0017-00042-0143 | FLIPPER BUTTON HOUSING                      |
| 3    | 0017-00009-0366 | FLIPPER BUTTON MTG. PLATE                   |
| 4    | 0017-00101-0025 | #8 x 1/2 SLOT HEX HD. W/S.E.M.S. (2 REQ'D.) |
|      | A627-00062-0000 | FLIPPER BUTTON SWITCH ASSY. - NOT SHOWN     |
|      |                 | <p><u>FLIPPER ASSY.</u></p>                 |
| 1    | A627-00097-0000 | ARM & SHAFT SUB ASSY.                       |
| 2    | 0017-00042-0142 | FLIPPER HOUSING                             |
| 3    | 0017-00009-0357 | FLIPPER RUBBER                              |
| 4    | 0017-00101-0014 | #6 x 1/2 SELF TAP SCREW                     |
| 5    | 0017-00104-0083 | PLAIN WASHER                                |
|      | A627-00098-0000 | FLIPPER ASSY. – COMPLETE                    |



**NO. 627 -- ROTATION VIII -- BALL GATE & BALL TILT ASSYS.**



**BALL TILT ASSY.**



**BALL GATE ASSY.**

NO. 627 – ROTATION VIII – BALL GATE & BALL TILT ASSYS.

ORDER BY PART NUMBER ONLY

| ITEM | PART NO         | DESCRIPTION   |
|------|-----------------|---|
| 1    | 0627-00120-0000 | <u>BALL GATE ASSY.</u>  |
| 2    | 0017-00009-0334 | BALL GATE BRKT.   |
| 3    | 0017-00009-0324 | GATE<br>SHAFT   |
|      | A627-00015-0000 | BALL GATE ASSY. - (LEFT) - COMPLETE   |
|      | A627-00015-0100 | BALL GATE ASSY. - (RIGHT) - COMPLETE  |
|      |                 | <u>BALL TILT ASSY.</u>  |
| 1    | 0017-00009-0371 | TILT HANGER   |
| 2    | A614-00075-0000 | PLUMB BOB ASSY.   |
| 3    | 0017-00009-0372 | TILT CONTACT BRACKET  |
|      | 0017-00101-0017 | #6 x 1/2 HEX HD. S.M.S. (4 REQ'D.) - NOT SHOWN<br>(USED TO MOUNT BALL TILT ASSY.) |

NO. 627 - ROTATION VIII - EQUIPMENT CHART

ORDER BY PART NUMBER ONLY

| ITEM | PART NO         | DESCRIPTION   |
|------|-----------------|---|
|      |                 | <u>PRINTED CIRCUIT BOARDS</u>                       |
|      | A084-91313-G627 | GAME LOGIC P.C. BOARD                               |
|      | A084-91306-B627 | DISPLAY P.C. BOARD                                  |
|      | A080-90200-G627 | COMMUTATOR P.C. BOARD                               |
|      | A082-90400-E000 | POWER SUPPLY P.C. BOARD                             |
|      | A082-90502-C000 | MOTOR DRIVER P.C. BOARD                             |
|      | A082-91317-B000 | TABLE POSITION P.C. BOARD                           |
|      | A082-91316-A000 | KEYBOARD P.C. BOARD                                 |
|      | A082-91104-A000 | SHAFT ENCODER P.C. BOARD                            |
|      | A082-91320-C000 | CHARACTERIZATION P.C. BOARD                         |
|      | A084-90501-C627 | SOLENOID DRIVER P.C. BOARD                          |
|      | A082-91322-A000 | COIN CIRCUIT P.C. BOARD                             |
|      |                 | <u>COIL ASSY. LISTING</u>                           |
|      | A627-00045-0000 | THUMPER BUMPER COIL ASSY. BALLY PART NO. AO-27-1400 |
|      | A627-00044-0000 | SLINGSHOT COIL ASSY. AO-27-1200                     |
|      | A627-00044-0000 | KICK OUT COIL ASSY. AO-27-1200                      |
|      | A627-00092-0000 | FLIPPER COIL ASSY. AQ-25-500-34-5050                |
|      | A627-00094-0000 | ELECTRIC SHOOTER COIL ASSY. AO-27-1300              |
|      |                 | <u>SWITCH ASSY. LISTINGS</u>                        |
|      | A627-00038-0000 | THUMPER BUMPER SWITCH ASSY.                         |
|      | A627-00025-0000 | THUMPER BUMPER SW. & BRKT. ASSY.                    |
|      | A627-00039-0000 | TARGET SWITCH ASSY. (RECTANGULAR)                   |
|      | A627-00026-0000 | TARGET SW. & BRKT. ASSY. (RECTANGULAR)              |
|      | A627-00040-0000 | TARGET SWITCH ASSY. (ROUND)                         |
|      | A627-00027-0000 | TARGET SW. & BRKT. ASSY. (ROUND)                    |
|      | A627-00041-0000 | SWITCH ASSY. - UPRIGHT                              |
|      | A627-00028-0000 | SW. & BRKT. ASSY. - UPRIGHT                         |
|      | A627-00029-0000 | ROLL OVER WIRE ASSY. - RIGHT                        |
|      | A627-00030-0000 | ROLL OVER WIRE ASSY. - LEFT                         |
|      | A627-00011-0000 | WIPER SW. ASSY. - COMMUTATOR                        |
|      | A627-00033-0000 | KICK OUT SWITCH ASSY.                               |
|      | A627-00034-0000 | WIRE ROLL-OVER SW. ASSY.                            |
|      | A627-00035-0000 | SPINNER SWITCH ASSY.                                |
|      | A627-00036-0000 | SWITCH ASSY. (STAR ROLL OVER)                       |
|      | A627-00062-0000 | FLIPPER BUTTON SWITCH ASSY.                         |
|      |                 | <u>MISCELLEANEOUS - POWER SUPPLY</u>                |
|      | MT00-00067-0000 | TRANSFORMER   |
|      | 0061-322J8-5F2X | CAPACITOR 10,000 MFD, 75V.                          |
|      | 0061-326G8-5F2X | CAPACITOR 20,000 MFD, 35V.                          |
|      |                 | <i>M+70 q. Logic regner</i>                         |