

# INTERFACE BOARD (P306) (MODEL 13K4705)

## RESISTORS

R201	340X3910-934	91 Ohm $\pm 5\%$ , 1/2W Carbon	R211	340X2331-934	330 Ohm $\pm 5\%$ , 1/4W Carbon
R202	340X3183-944	18k Ohm $\pm 10\%$ , 1/2W Carbon	R212	340X2331-934	330 Ohm $\pm 5\%$ , 1/4W Carbon
R203	340X3102-934	1k Ohm $\pm 5\%$ , 1/2W Carbon	R213	340X2331-934	330 Ohm $\pm 5\%$ , 1/4W Carbon
R204	340X2101-934	100 Ohm $\pm 5\%$ , 1/4W Carbon	R214	340X2151-934	150 Ohm $\pm 5\%$ , 1/4W Carbon
R205	340X2333-934	33k Ohm $\pm 5\%$ , 1/4W Carbon	R215	340X2151-934	150 Ohm $\pm 5\%$ , 1/4W Carbon
R206	340X3331-944	330 Ohm $\pm 10\%$ , 1/2W Carbon	R216	340X2151-934	150 Ohm $\pm 5\%$ , 1/4W Carbon
R207	340X3102-934	1k Ohm $\pm 5\%$ , 1/2W Carbon	R217	340X2101-934	100 Ohm $\pm 5\%$ , 1/4W Carbon
R208	340X3102-934	1k Ohm $\pm 5\%$ , 1/2W Carbon	R218	340X3102-934	1k Ohm $\pm 5\%$ , 1/2W Carbon
R209	340X2333-934	33k Ohm $\pm 5\%$ , 1/4W Carbon	R219	340X3102-934	1k Ohm $\pm 5\%$ , 1/2W Carbon
R210	340X2101-934	100 Ohm $\pm 5\%$ , 1/4W Carbon	VR201	40X0590-017	1.5k Ohm Black Level Control

## SEMICONDUCTORS

TR201	86X0121-001	Transistor (NPN) MPS-A20
TR202	86X0121-001	Transistor (NPN) MPS-A20
TR203	86X0121-001	Transistor (NPN) MPS-A20
TR204	86X0066-001	Transistor (PNP) MPS-A70
TR205	86X0066-001	Transistor (PNP) MPS-A70
TR206	86X0066-001	Transistor (PNP) MPS-A70
TR207	86X0121-001	Transistor (NPN) MPS-A20
TR208	86X0121-001	Transistor (NPN) MPS-A20
TR209	86X0121-001	Transistor (NPN) MPS-A20
TR210	86X0121-001	Transistor (NPN) MPS-A20
X201	66X0046-001	Diode Silicon FDH-444
X202	66X0046-001	Diode Silicon FDH-444
X203	66X0046-001	Diode Silicon FDH-444
X204	66X0046-001	Diode Silicon FDH-444
ZD201	66X0040-018	Diode, Zener 6.8V, 5%, 0.5W IN5235B
ZD202	66X0040-019	Diode, Zener 3.9V, 5%, 0.5W IN5228B

## MISCELLANEOUS

J201	204X9300-958	Socket, 6 Pin
J202	204X9300-958	Socket, 6 Pin
J203	206X5019-207	Socket, 4 Pin
P201	204X9601-195	Plug, 6 Pin
P202	204X9601-195	Plug, 6 Pin
P203	204X9600-845	Plug, 4 Pin
P204	6A393-003	Plug, 3 Pin
P205	6A0393-006	Plug, 6 Pin

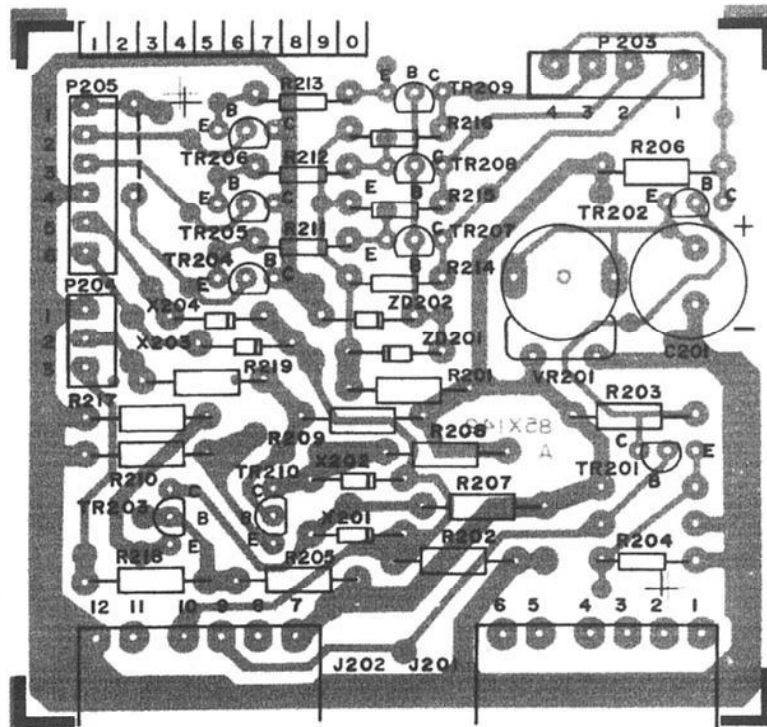


FIGURE 18. INTERFACE P.C. BOARD P306